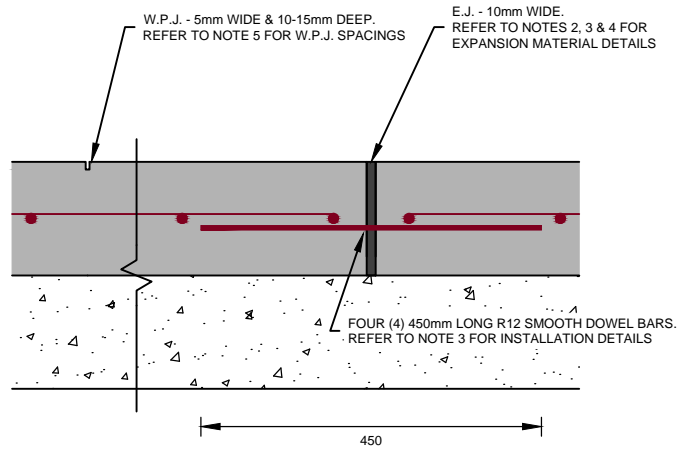


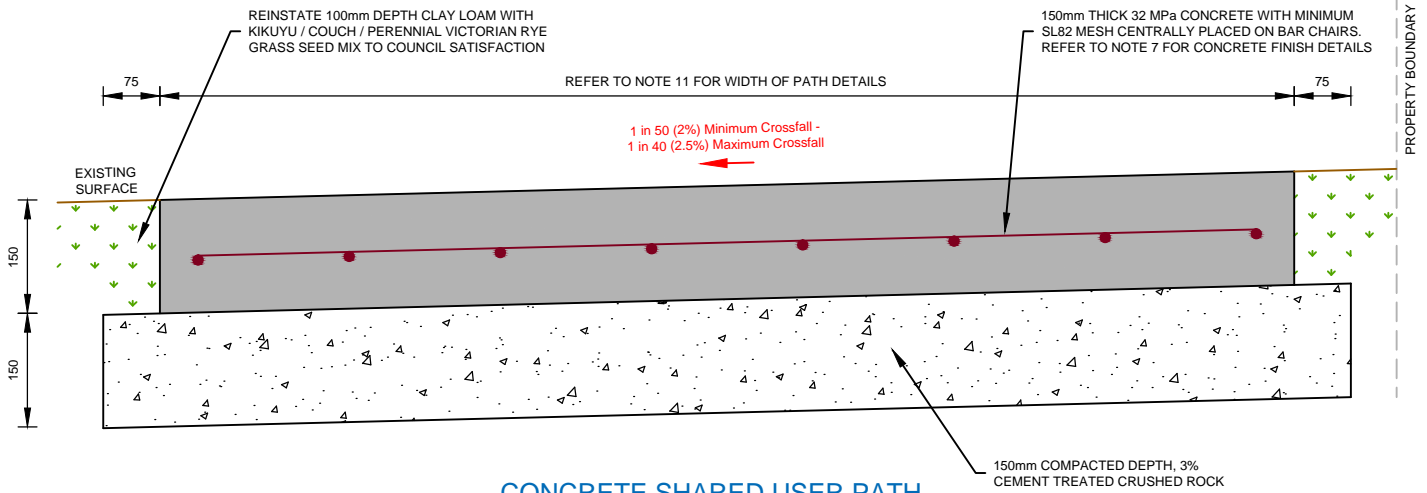
NOTES:

1. DIMENSIONS IN MILLIMETRES UNLESS OTHERWISE INDICATED.
2. EXPANSION JOINTS (E.J.) TO BE 'CONNOLLY EXPANSION JOINT' OR APPROVED EQUIVALENT TO MATCH FULL DEPTH OF CONCRETE.
3. EXPANSION JOINTS TO HAVE FOUR (4) 450mm LONG R12 SMOOTH GALVANISED DOWEL BARS INSTALLED AT MAXIMUM 300mm CENTRES COMMENCING 150mm FROM EDGE, ONE SIDE INSTALLED IN SLEEVES, WITH 10mm THICK POLYETHYLENE EXPANSION FOAM IN ACCORDANCE WITH MANUFACTURER'S SPECIFICATIONS.
4. EXPANSION JOINTS (E.J.) AT MAXIMUM 18m CENTRES AND AT THE START AND END OF NEWLY CONSTRUCTED FOOTPATH SECTIONS.
5. WEAKENED PLANE JOINTS (W.P.J.) IN CONCRETE FOOTPATH TO BE INSTALLED AT 2.5m INTERVALS AND MADE WITH A SAW CUT AFTER CONCRETE HAS BEEN POURED.
6. CONCRETE COLOUR TO TO BE 4% CHARCOAL.
7. CONCRETE SHARED USER PATH TO HAVE STIPPLE FINISH WITH NO HIGHLIGHTS.
8. SHARED USER PATH PANELS ADJACENT VEHICLE CROSSINGS ARE TO BE THICKENED IN ACCORDANCE WITH THE APPROPRIATE VEHICLE CROSSING STANDARD DRAWING. REFER TO 'VEHICLE CROSSINGS' SERIES OF MAROONDAH CITY COUNCIL STANDARD DRAWINGS.
9. CLASS 3 CEMENT TREATED CRUSHED ROCK MAY CONTAIN 100% CRUSHED CONCRETE IN ACCORDANCE WITH VICROADS TECHNICAL NOTE TN 107 - USE OF RECYCLED MATERIALS IN ROAD PAVEMENTS .
10. FORM WORK TIMBER TO BE A MINIMUM OF 140mm DEEP.
11. WIDTH OF SHARED USER PATH (2.5m TO 3.0m) TO BE DIRECTED BY COUNCIL.
12. SHARED USER PATH TO HAVE A MINIMUM CROSSFALL GRADE OF 1 in 50 (2%) AND A MAXIMUM CROSSFALL GRADE OF 1 in 40 (2.5%).



CONCRETE SHARED USER PATH JOINT DETAILS

SCALE 1:10 @ A4



CONCRETE SHARED USER PATH

SCALE 1:10 @ A4



Engineering & Building Services
Ph: (03) 9298 4292
www.maroondah.vic.gov.au

Title:

**SHARED USER PATH
PAVEMENT DETAILS - CONCRETE**

Revision: 00

Date: October 2020

Sheet: 1 of 1

Standard Drawing Number:

MCC-403