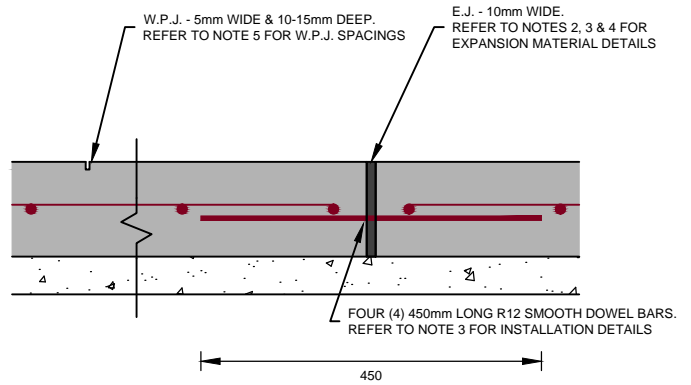


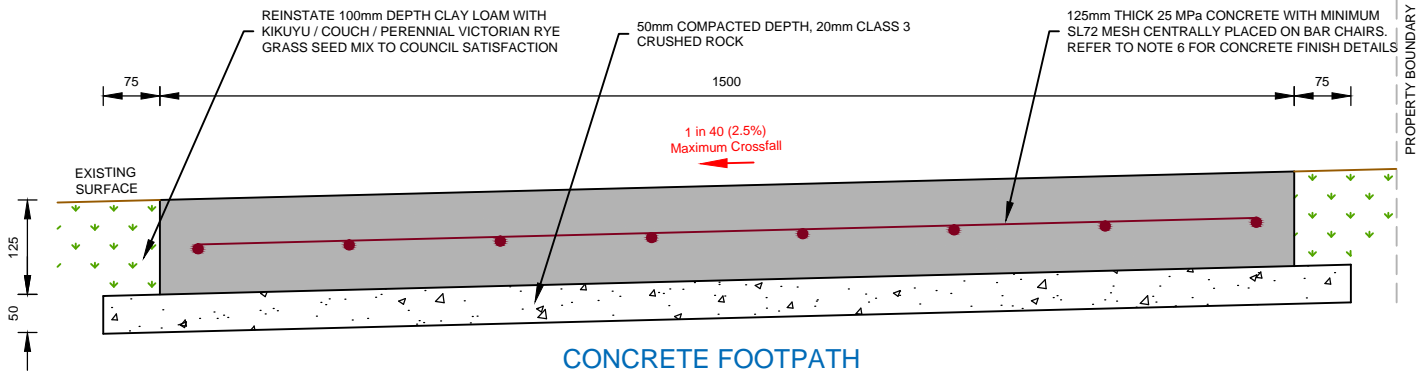
NOTES:

1. DIMENSIONS IN MILLIMETRES UNLESS OTHERWISE INDICATED.
2. EXPANSION JOINTS (E.J.) TO BE 'CONNOLLY EXPANSION JOINT' OR APPROVED EQUIVALENT TO MATCH FULL DEPTH OF CONCRETE.
3. EXPANSION JOINTS TO HAVE FOUR (4) 450mm LONG R12 SMOOTH GALVANISED DOWEL BARS INSTALLED AT MAXIMUM 300mm CENTRES COMMENCING 150mm FROM EDGE, ONE SIDE INSTALLED IN SLEEVES, WITH 10mm THICK POLYETHYLENE EXPANSION FOAM IN ACCORDANCE WITH MANUFACTURER'S SPECIFICATIONS.
4. EXPANSION JOINTS (E.J.) AT MAXIMUM 18m CENTRES AND AT THE START AND END OF NEWLY CONSTRUCTED FOOTPATH SECTIONS.
5. WEAKENED PLANE JOINTS (W.P.J.) IN CONCRETE FOOTPATH TO BE INSTALLED AT 1.5m INTERVALS AND MADE WITH A 'T' IRON AT TIME OF CONSTRUCTION.
6. CONCRETE FOOTPATH TO HAVE STIPPLE FINISH WITH NO HIGHLIGHTS.
7. FOOTPATH PANELS ADJACENT VEHICLE CROSSINGS ARE TO BE THICKENED IN ACCORDANCE WITH THE APPROPRIATE VEHICLE CROSSING STANDARD DRAWING. REFER TO 'VEHICLE CROSSINGS' SERIES OF MAROONDAH CITY COUNCIL STANDARD DRAWINGS.
8. CLASS 3 CRUSHED ROCK MAY CONTAIN 100% CRUSHED CONCRETE IN ACCORDANCE WITH VICROADS TECHNICAL NOTE TN 107 - USE OF RECYCLED MATERIALS IN ROAD PAVEMENTS .
9. FORM WORK TIMBER TO BE A MINIMUM OF 90mm DEEP.
10. FOOTPATH TO HAVE A MAXIMUM CROSSFALL GRADE OF 1 in 40 (2.5%).
11. FOOTPATHS CONSTRUCTED TO FALL TOWARDS PRIVATE PROPERTY ('REVERSE FALL') TO INCLUDE SPOON DRAIN IN ACCORDANCE WITH MAROONDAH CITY COUNCIL STANDARD DRAWING MCC- 213, UNLESS OTHERWISE DIRECTED BY COUNCIL.



CONCRETE FOOTPATH JOINT DETAILS

SCALE 1:10 @ A4



CONCRETE FOOTPATH

SCALE 1:10 @ A4



Engineering & Building Services
Ph: (03) 9298 4292
www.maroondah.vic.gov.au

Title:

**FOOTPATH PAVEMENT DETAILS -
CONCRETE**

Revision: 00

Date: October 2020

Sheet: 1 of 1

Standard Drawing Number:

MCC-401