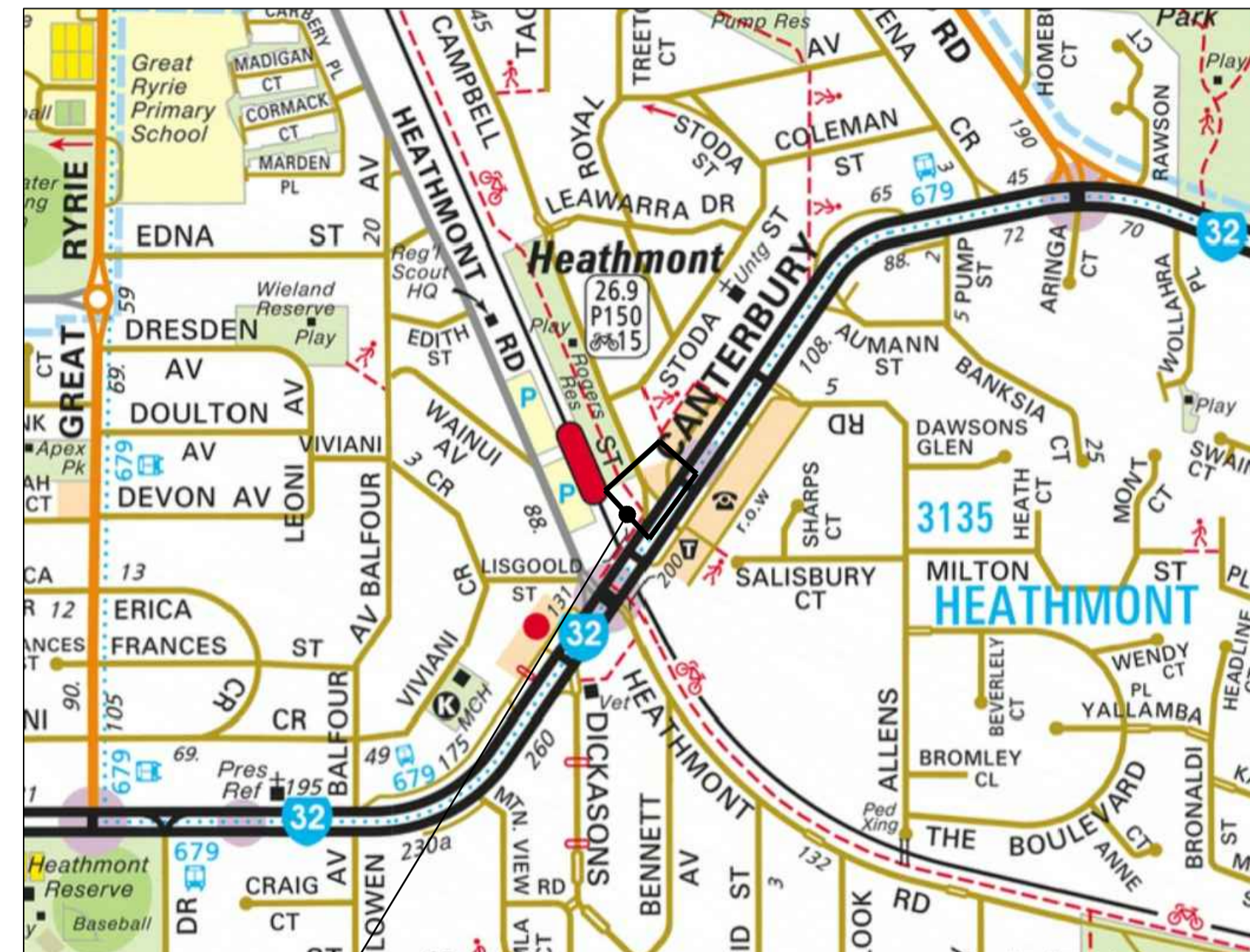


# CAMPBELL STREET / CANTERBURY ROAD, HEATHMONT RAISED PEDESTRIAN CROSSING

## GENERAL NOTES

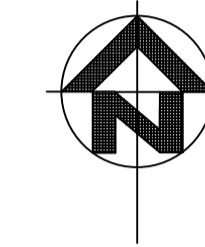
- ALL LEVELS AND COORDINATES ARE TO AN ARBITRARY DATUM.
- THE CONTRACTOR SHALL SETOUT THE WORKS FROM THE NOMINATED REFERENCE LINES, SURVEY MARKS AND CONTROL POINTS SHOWN ON THE PLANS AND TO THE SPECIFIED DETAILS.
- THE CONTRACTOR SHALL MAINTAIN AND PROTECT THE SURVEY MARKS FOR THE DURATION OF THE CONTRACT.
- THE EDGES OF EXCAVATIONS IN BITUMINOUS AND/OR CONCRETE PAVEMENT ARE TO BE SAW CUT TO SUFFICIENT DEPTH (MINIMUM 200mm) TO PREVENT ANY OVERBREAK, LIFTING OR DAMAGE TO THE ADJACENT PAVEMENT.
- ALL EXISTING REDUNDANT CONCRETE, PAVEMENT, SOIL, RUBBISH AND CONSTRUCTION DEBRIS SHALL BE TAKEN UP AND REMOVED FROM SITE.
- PRIOR TO COMPLETION THE CONTRACTOR SHALL ENSURE THE SITE IS TIDIED AND OBTAIN A CLEARANCE FROM THE SUPERINTENDENT.
- ALL EXISTING TREES WITHIN THE WORKS AREA SHALL BE PROTECTED AT ALL TIMES UNLESS OTHERWISE STATED OR DIRECTED BY COUNCIL'S SUPERINTENDENT.
- TRAFFIC MANAGEMENT SHALL BE ARRANGED BY THE CONTRACTOR FOR THE DURATION OF THE WORKS IN ACCORDANCE WITH THE SPECIFICATION AND TO THE SATISFACTION OF THE SUPERINTENDENT, INCLUDING THE PROVISION OF ALL NECESSARY SIGNAGE, LIGHTING AND BARRICADING. TRAFFIC FLOWS IN ALL ADJUTING ROADWAYS AND PROPERTY ACCESS SHALL REMAIN UNIMPEDED FOR THE DURATION OF THE WORKS. ALL TRAFFIC MANAGEMENT WORKS TO BE IN ACCORDANCE WITH AS1742.3 AND THE CODE OF PRACTICE FOR THE ROAD MANAGEMENT ACT 2004.
- ALL DISTURBED AREAS WITHIN THE WORKS LIMIT SHALL BE TOPSOILED (MIN. 100mm DEPTH), CULTIVATED, FERTILISED AND SEEDED WITH AN APPROVED GRASS SEED MIXTURE.
- ALL DEPTHS OF ASPHALT & CRUSHED ROCK FOR NEW PAVEMENT COMPOSITION ARE COMPACTED DEPTHS.
- ALL NEW KERB AND CHANNEL CONSTRUCTION IS TO MATCH IN NEATLY WITH THE EXISTING KERB & CHANNEL.
- THE EXACT LOCATION OF ALL SERVICES SHALL BE DETERMINED BY THE CONTRACTOR PRIOR TO EXCAVATING IN THEIR VICINITY. NO GUARANTEE IS GIVEN THAT ALL SERVICES ARE SHOWN. EXTREME CAUTION SHALL BE EXERCISED WHEN EXCAVATING IN THE VICINITY OF SERVICES, INCLUDING ELECTRICITY POLES, UNDERGROUND SERVICES, ETC. THE RELEVANT AUTHORITY SHALL BE CONTACTED PRIOR TO EXCAVATING IN CLOSE PROXIMITY TO SERVICES. SERVICE LOCATIONS ARE INDICATIVE ONLY.
- ALL SERVICE FITTINGS WHICH ARE WITHIN THE LIMIT OF WORKS AREA SHALL BE ADJUSTED TO MATCH PROPOSED FINISHED SURFACE LEVELS AS REQUIRED.
- ALL NEW LINEMARKING AND SIGNAGE SHALL BE IN ACCORDANCE WITH VIC ROADS TRAFFIC ENGINEERING MANUAL VOL. 2 SIGNS AND MARKINGS AND AS1742.2, AND INSTALLED AS SHOWN ON THE SIGNAGE AND LINEMARKING PLANS. ALL NEW SIGNS ARE TO BE LOCATED 800mm BEHIND BACK OF KERB AND AS DIRECTED BY COUNCIL'S SUPERINTENDENT.
- THE CONTRACTOR IS TO SUPPORT ELECTRICITY POLES ALL IN ACCORDANCE WITH RELEVANT SERVICE AUTHORITY REQUIREMENTS.



LOCALITY PLAN

N.T.S.  
(MELWAY REF: MAP 50 A12)

SITE OF WORKS



## DRAWING INDEX

SHEET No.	DESCRIPTION
1	FACE SHEET: - LOCALITY PLAN, GENERAL NOTES & DRAWING INDEX
2	TYPICAL SECTIONS & DETAILS
3	DETAIL PLAN
4	DESIGN CONTOUR PLAN & SETOUT DETAILS
5 - 7	KERB RETURN LONGITUDINAL SECTIONS
8	DRAINAGE LONGITUDINAL SECTION & PIT SCHEDULE
9	LINEMARKING & SIGNAGE PLAN

**WARNING**  
BEWARE OF UNDERGROUND SERVICES  
THE LOCATION OF UNDERGROUND SERVICES SHOWN ARE APPROXIMATE ONLY AND THERE IS NO GUARANTEE IS GIVEN THAT ALL SERVICES ARE SHOWN. THE CONTRACTOR MUST VERIFY ALL SERVICES ON SITE PRIOR TO ANY EXCAVATION WORKS.



**NOTE:**  
ALL NOTED "ABANDONED" SERVICES INCLUDING GAS MAINS, WATER MAINS, ETC. - THE CONTRACTOR SHALL BE RESPONSIBLE & CONFIRM THAT THESE SERVICES ARE ABANDONED, INCLUDING LIAISING WITH THE RELEVANT AUTHORITY PRIOR TO COMMENCING CONSTRUCTION.

**NOTE:**  
THE APPOINTED CONTRACTOR SHALL INDEMNIFY AND HOLD HARMLESS THE COUNCIL, CRE CONSULTING ENGINEERS (CRE) AND ITS EMPLOYEES INCLUDING SUB-CONTRACTORS AGAINST ANY CLAIM FOR INJURY, LOSS OR DAMAGE THAT IS MADE ARISING OUT OF THE NEGLIGENCE ACTS OR OMISSIONS OF THE CONTRACTOR. ALL INFORMATION PROVIDED ON THESE PLANS SHALL BE CHECKED BY THE APPOINTED CONTRACTOR PRIOR TO COMMENCING CONSTRUCTION. IF THERE ARE ANY ERRORS, PERCEIVED AMBIGUITY OR INFORMATION IS NOT UNDERSTOOD BY THE CONTRACTOR, THEN THE CONTRACTOR SHOULD CONTACT COUNCIL'S SUPERINTENDENT IMMEDIATELY FOR CLARIFICATION. COUNCIL SHOULD BE GIVEN THE OPPORTUNITY AND SUFFICIENT TIME TO INVESTIGATE, PRIOR TO ANY CONSTRUCTION COMMENCING OR CONTINUING. CRE WILL NOT BE HELD RESPONSIBLE OR LIABLE AGAINST ANY CLAIM MADE FOR MISINTERPRETATION OF THE SUPPLIED PLANS.

**NOTE:**  
THIS DESIGN IS PROTECTED BY COPYRIGHT LAWS AND CANNOT BE RELEASED TO ANY OTHER PERSONS, OTHER THAN THE CLIENT INTENDED FOR AS INDICATED IN THE TITLE BLOCK ON THESE DRAWINGS. IN THE EVENT OF ANY USE OF THESE FILES, INCLUDING DISTRIBUTION, MODIFICATION, ENHANCEMENT OR FOR ADDITIONAL DESIGN WORK, CRE ASSUMES NO RESPONSIBILITY FOR THE ACCURACY AND INTEGRITY OF THE DATA.

LEGEND	DESCRIPTION	NO.	AMENDMENTS	DATE
—T—	EX TELSTRA OPTIC FIBRE			
—T—	EX TELSTRA CABLE & PIT			
—T—	EX TELSTRA OPTIC FIBRE			
—S—	EX SENER & PIT			
—W—	EX WATER MAIN			
—ABW—	EX ABANDONED WATER MAIN			
—G—	EX GAS MAIN			
—ABG—	EX ABANDONED GAS MAIN			
—E—	EX U/G ELECTRICITY CABLE			
—E—	EX O/H ELECTRICITY CABLE			
—	EX TABLE DRAIN			
—HPC—	EX HIGH PRESSURE GAS MAIN			
—	EX DRAIN & PIT			
—	PROPOSED DRAIN & PIT			
—HD—	HOUSE DRAIN			
—	STOP VALVE			
—	FIRE FLUG			
—	FIRE HYDRANT (ABOVE GROUND)			
—	FIRE HYDRANT (GROUND LEVEL)			
—	ELECTRICITY SUPPLY POLE			
—	E.S.P. WITH LIGHT			
—	LIGHT POLE ONLY			
—	TELECOM PILLAR			
—	EXISTING POST			
—	FENCE			
—	EX SIGN			
—	EXISTING BOLLARD			
—	RUBBISH BIN			
—	PSM			
—	STN/TBM			
—	TRAFFIC SIGNAL PIT			
—	TRAFFIC SIGNAL POLE			
—	UNCLASSIFIED PIT			
—	TREE			
—	LIMIT OF WORKS			

**CRE**  
CRE CONSULTING ENGINEERS PTY LTD  
Civil • Municipal • Drainage • Project Management  
704 Mount Alexander Road, Moonee Ponds, Vic, 3039  
Phone: 0417 318 556  
Email: admin@creconsulting.com.au

DESIGNED : CRE  
DATE : 26/07/23  
CHECKED :  
DATE :  
SURVEYED: MOONLAND  
DATE : JULY 2023  
SURVEY DATUM : ARBITRARY  
SCALES : AS SHOWN @A1



CLIENT:  
**CAMPBELL STREET / CANTERBURY ROAD, HEATHMONT  
RAISED PEDESTRIAN CROSSING**  
FACE SHEET

CRE REF: 3042-(REV-P4).DWG  
CRE REV. NO.: P4  
AMEND. NO.: -  
DWG. NO. **3042**  
SHEET: 1 OF 9  
SIZE: A1

INSTALL TGS's WHERE SHOWN ON PLAN TACTILE GROUND SURFACE INDICATORS TO BE FIBRE REINFORCED HERCULITE POLYMER, CHEMICALLY AND MECHANICALLY FIXED AT 8 POINTS WITH TECK-ANCHOR SCREWS & PLUGS, WHITE IN COLOUR WITH A MINIMUM SLIP RESISTANCE OF P5 OR R12 AS PER AS/NZS 1428.4.1 (2009) AND SUPPLIED BY ESP ACCESS TACTILE SYSTEMS. Tel: 1300 665 761 OR COUNCIL APPROVED EQUIVALENT.

INSTALL TGS's WHERE SHOWN ON PLAN TACTILE GROUND SURFACE INDICATORS TO BE FIBRE REINFORCED HERCULITE POLYMER, CHEMICALLY AND MECHANICALLY FIXED AT 8 POINTS WITH TECK-ANCHOR SCREWS & PLUGS, WHITE IN COLOUR WITH A MINIMUM SLIP RESISTANCE OF P5 OR R12 AS PER AS/NZS 1428.4.1 (2009) AND SUPPLIED BY ESP ACCESS TACTILE SYSTEMS. Tel: 1300 665 761 OR COUNCIL APPROVED EQUIVALENT.

CONSTRUCT 125mm DEPTH REINFORCED (SL72 MESH) CONCRETE FOOTPATH ON 50mm DEPTH CLASS 3 FCR, AS PER MCC STD DWG MCC-401.

CONSTRUCT VARYING DEPTH SIZE 10mm TYPE N ASPHALT PEDESTRIAN PLATFORM USING GUNMETAL GREY COLOURED ASPHALT WITH BRICK STAMPED STENCIL. REFER TO GRADING DESIGN INCLUDING LONGITUDINAL/CROSS SECTIONS, SETOUT DETAILS ETC. PROVIDED ON THESE PLANS FOR FURTHER LEVEL DETAILS.

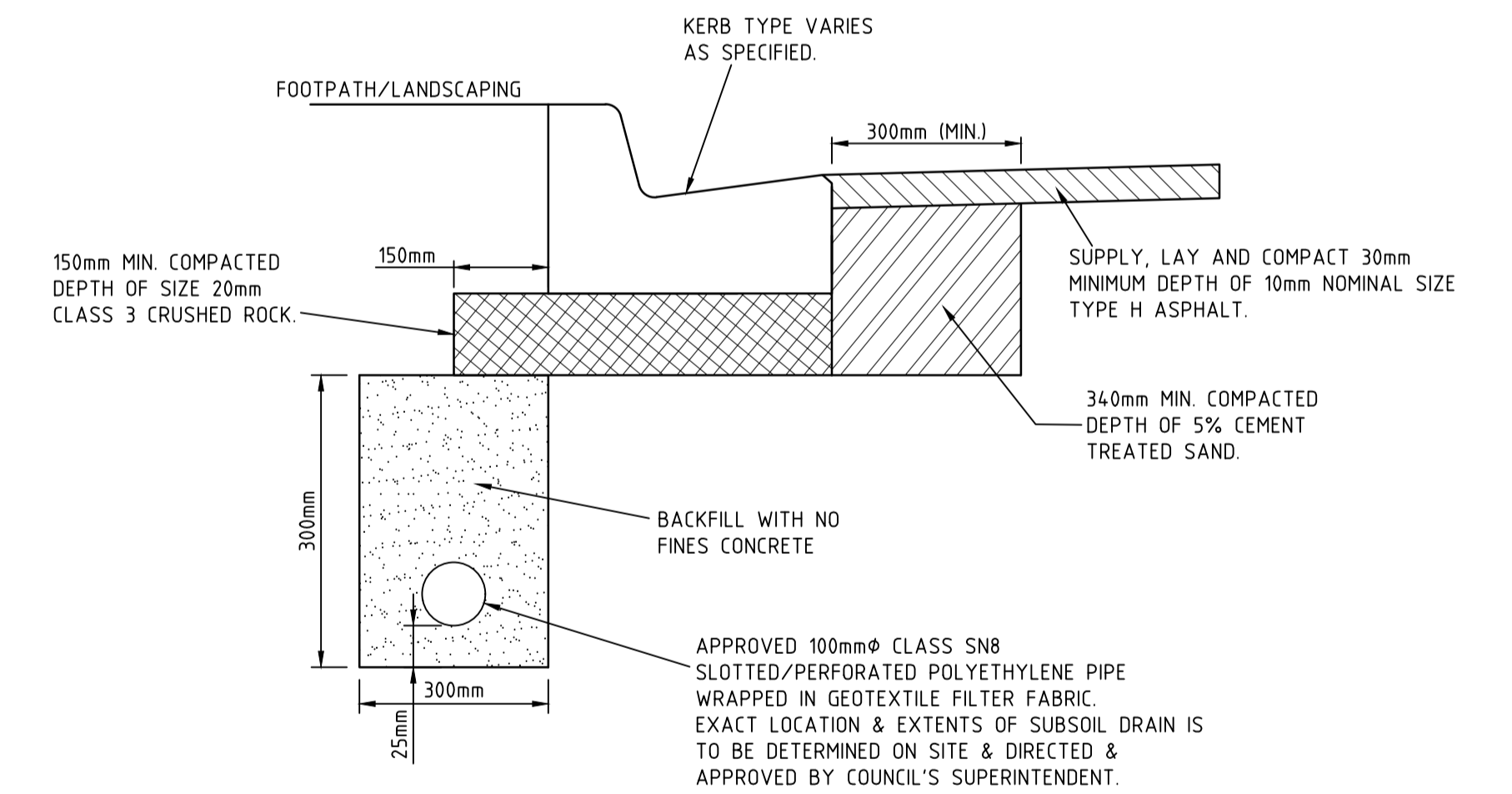
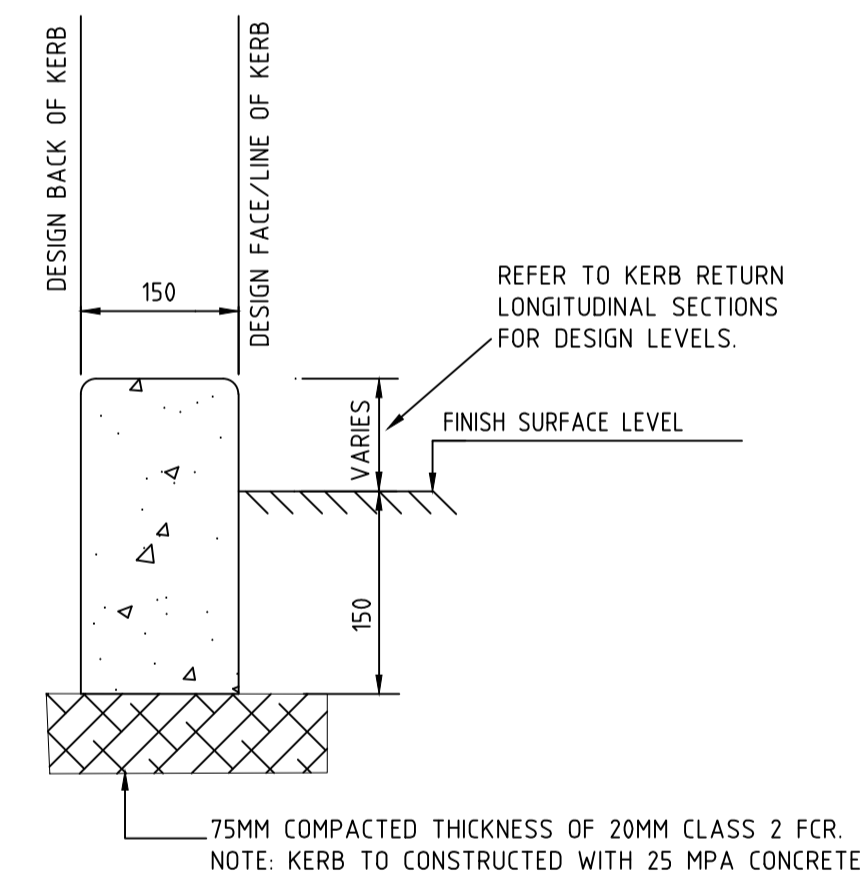
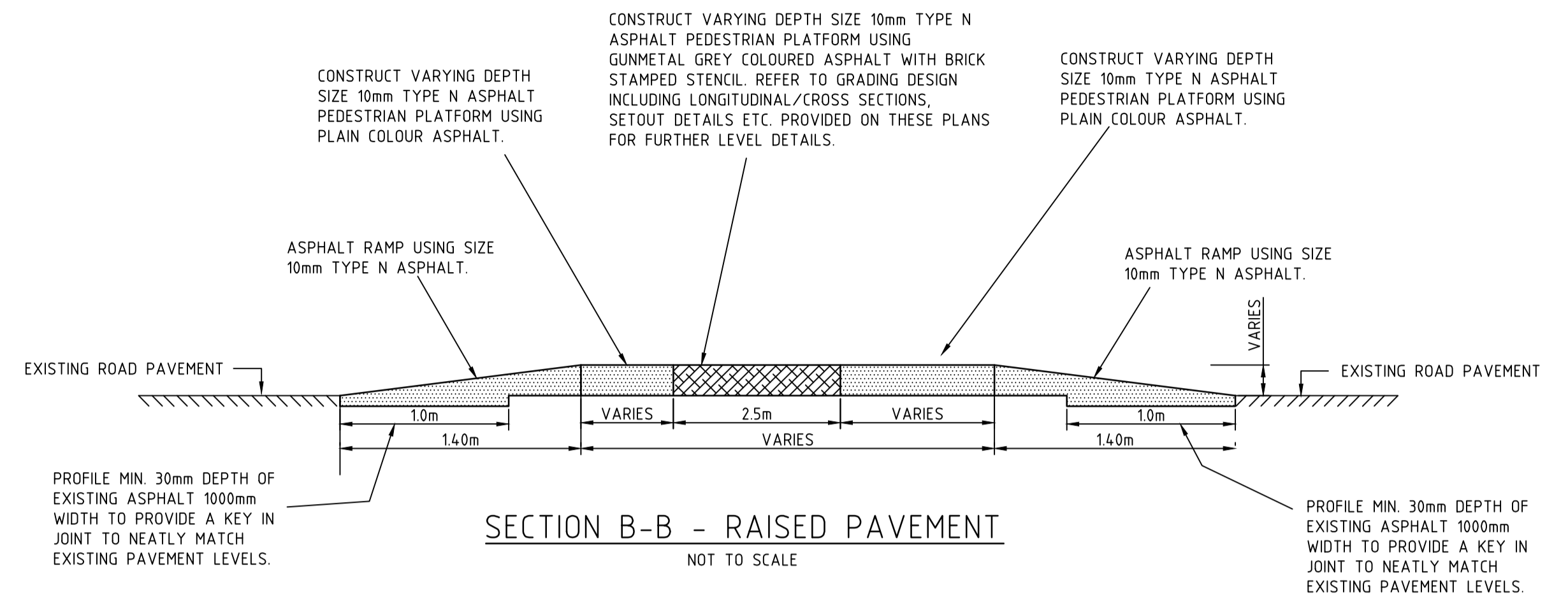
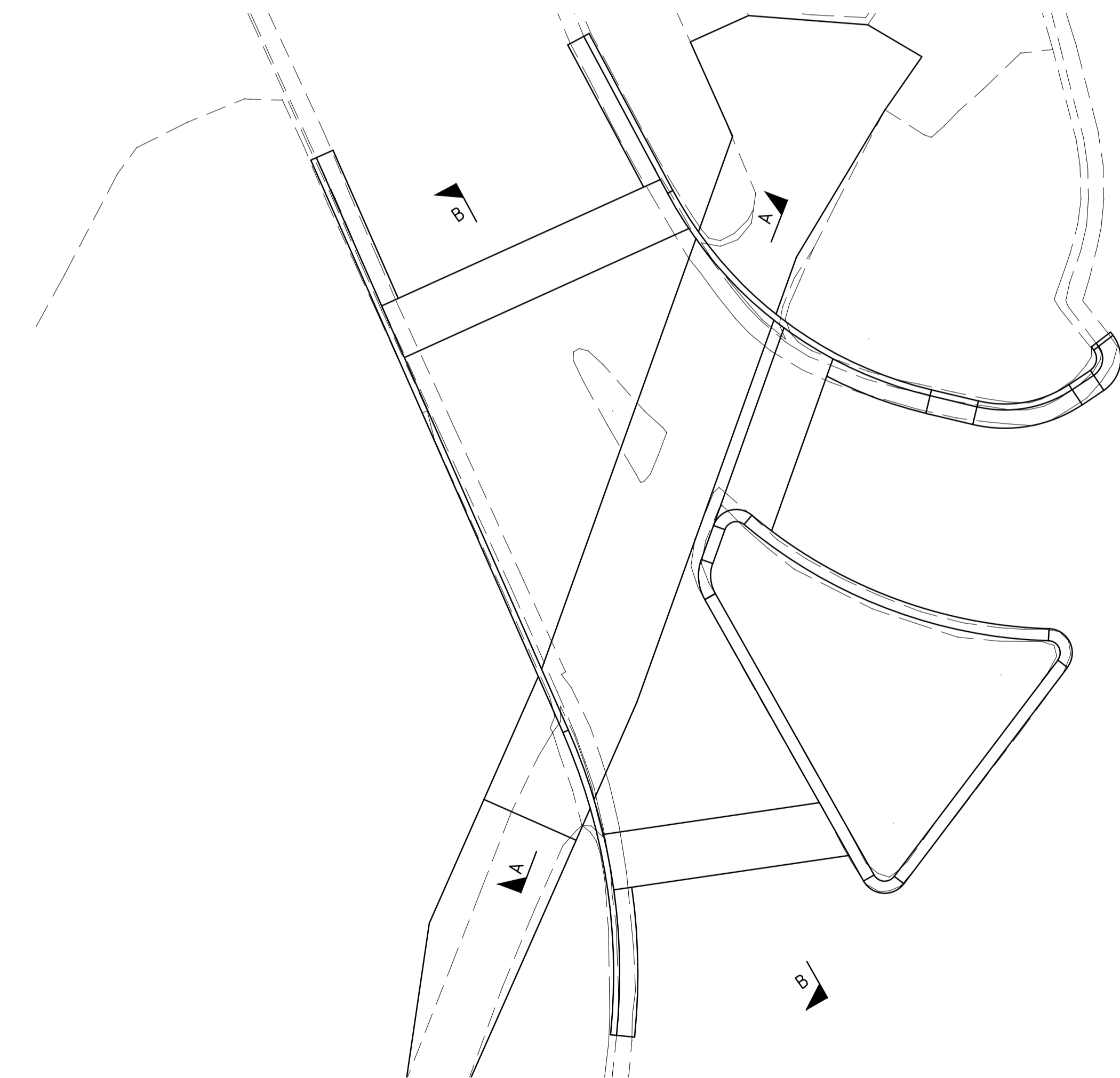
CONSTRUCT 125mm DEPTH REINFORCED (SL72 MESH) CONCRETE FOOTPATH ON 50mm DEPTH CLASS 3 FCR, AS PER MCC STD DWG MCC-401.

CONSTRUCT 30mm COMPACTED DEPTH OF SIZE 7mm TYPE N ASPHALT FOOTPATH ON 100mm DEPTH CLASS 3 SIZE 20mm FCR, AS PER MCC STD DWG MCC-402.

BREAK OUT AND REMOVE EXISTING KERB AND CHANNEL AND CONSTRUCT NEW CONCRETE 'MODIFIED' BARRIER KERB AS PER DETAIL SHOWN ON THIS PAGE.

BREAK OUT AND REMOVE EXISTING KERB AND CHANNEL AND CONSTRUCT NEW CONCRETE 'MODIFIED' BARRIER KERB AS PER DETAIL SHOWN ON THIS PAGE.

TYPICAL SECTION A-A - RAISED PAVEMENT AND FOOTPATH  
NOT TO SCALE



**WARNING**  
BEWARE OF UNDERGROUND SERVICES  
THE LOCATION OF UNDERGROUND SERVICES SHOWN ARE APPROXIMATE ONLY AND THERE IS NO GUARANTEE IS GIVEN THAT ALL SERVICES ARE SHOWN. THE CONTRACTOR MUST VERIFY ALL SERVICES ON SITE PRIOR TO ANY EXCAVATION WORKS.



**NOTE:**  
ALL NOTED "ABANDONED" SERVICES INCLUDING GAS MAINS, WATER MAINS, ETC. - THE CONTRACTOR SHALL BE RESPONSIBLE & CONFIRM THAT THESE SERVICES ARE ABANDONED, INCLUDING LIAISING WITH THE RELEVANT AUTHORITY PRIOR TO COMMENCING CONSTRUCTION.

LEGEND	
— T —	EX TELSTRA OPTIC FIBRE
— T —	EX TELSTRA CABLE & PIT
— T —	EX TELSTRA OPTIC FIBRE
— S —	EX SEWER & PIT
— W —	EX WATER MAIN
— ABW —	EX ABANDONED WATER MAIN
— G —	EX GAS MAIN
— ABG —	EX ABANDONED GAS MAIN
— E —	EX U/G ELECTRICITY CABLE
— E —	EX O/H ELECTRICITY CABLE
— E —	EX TABLE DRAIN
— H —	EX HIGH PRESSURE GAS MAIN
— D —	EX DRAIN & PIT
— P —	PROPOSED DRAIN & PIT
— HD —	HOUSE DRAIN
— SV —	STOP VALVE
— F —	FIRE FLUG
— FH —	FIRE HYDRANT (ABOVE GROUND)
— FH —	FIRE HYDRANT (GROUND LEVEL)
— E —	ELECTRICITY SUPPLY POLE
— E —	E.S.P. WITH LIGHT
— L —	LIGHT POLE ONLY
— T —	TELECOM PILLAR
— P —	EXISTING POST
— F —	FENCE
— B —	EXISTING BOLLARD
— R —	RUBBISH BIN
— PSM —	PSM
— STN/TBM —	STN/TBM
— T —	TRAFFIC SIGNAL PIT
— T —	TRAFFIC SIGNAL POLE
— U —	UNCLASSIFIED PIT
— T —	TREE
— L —	LIMIT OF WORKS

NO.	AMENDMENTS	DATE

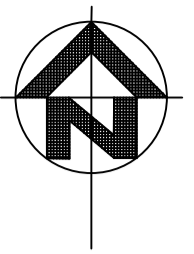
**CRE**  
CRE CONSULTING ENGINEERS PTY LTD  
Civil • Municipal • Drainage • Project Management  
704 Mount Alexander Road, Moonee Ponds, Vic, 3039  
Phone: 0417 318 556  
Email: admin@creconsulting.com.au

DESIGNED : CRE	DATE : 26/07/23
CHECKED :	DATE :
SURVEYED: MOONLAND	DATE : JULY 2023
SURVEY DATUM : ARBITRARY	
SCALES : AS SHOWN	①A1

CLIENT:  
**Maroondah**  
City Council

CAMPBELL STREET / CANTERBURY ROAD, HEATHMONT  
RAISED PEDESTRIAN CROSSING  
TYPICAL SECTIONS & DETAILS

CRE REF: 3042-(REV-P4).DWG
CRE REV. NO.: P4
AMEND. NO.: -
DWG. NO. <b>3042</b>
SHEET: 2 OF 9
SIZE: A1



**LEGEND**

- ASPHALT OVERLAY - (PROFILE & RESHEET WHERE REQUIRED)**  
PROFILE EXISTING ASPHALT PAVEMENT AS REQUIRED TO ALLOW FOR NEW 30mm DEPTH SIZE 10mm TYPE H ASPHALT WEARING COURSE. WHERE REQUIRED APPLY VARYING DEPTH SIZE 10mm TYPE H ASPHALT REGULATION COURSE TO WITHIN 30mm OF FINISHED SURFACE LEVELS.
- CONCRETE FOOTPATH**  
CONSTRUCT 125mm DEPTH REINFORCED (SL72 MESH) CONCRETE FOOTPATH ON 50mm DEPTH CLASS 3 FCR, AS PER MCC STD DWG MCC-401.
- ASPHALT FOOTPATH**  
CONSTRUCT 30mm COMPACTED DEPTH OF SIZE 7mm TYPE L ASPHALT FOOTPATH ON 100mm DEPTH CLASS 3 SIZE 20mm FCR, AS PER MCC STD DWG MCC-402.
- CONCRETE TRAFFIC ISLAND**  
CONSTRUCT CONCRETE TRAFFIC ISLAND AS PER MCC STD DWG MCC-604.
- ASPHALT RAISED PAVEMENT FLAT TOP - "PLAIN FINISH"**  
CONSTRUCT VARYING DEPTH SIZE 10mm TYPE H ASPHALT PEDESTRIAN PLATFORM REFER TO GRADING DESIGN INCLUDING LONGITUDINAL/CROSS SECTIONS, SETOUT DETAILS ETC. PROVIDED ON THESE PLANS FOR FURTHER LEVEL DETAILS.
- RAISED PAVEMENT FLAT TOP - "PATTERN FINISH"**  
CONSTRUCT VARYING DEPTH SIZE 10mm TYPE H ASPHALT PEDESTRIAN PLATFORM USING GUNMETAL GREY COLOURED ASPHALT WITH BRICK STAMPED STENCIL. REFER TO GRADING DESIGN INCLUDING LONGITUDINAL/CROSS SECTIONS, SETOUT DETAILS ETC. PROVIDED ON THESE PLANS FOR FURTHER LEVEL DETAILS.
- ASPHALT RAMP**  
CONSTRUCT ASPHALT RAMP USING SIZE 10mm TYPE H ASPHALT.
- REINSTATEMENT OF NATURE STRIPS**  
REINSTATEMENT OF NATURE STRIPS / BATTERS, INCLUDING SUPPLY AND SPREADING OF 100mm DEPTH TOP SOIL AND HYDRO MULCHING.
- REINSTATEMENT OF GARDEN BED**  
REINSTATEMENT OF GARDEN BED AS REQUIRED. ALL AS DIRECTED BY COUNCIL'S SUPERINTENDENT.

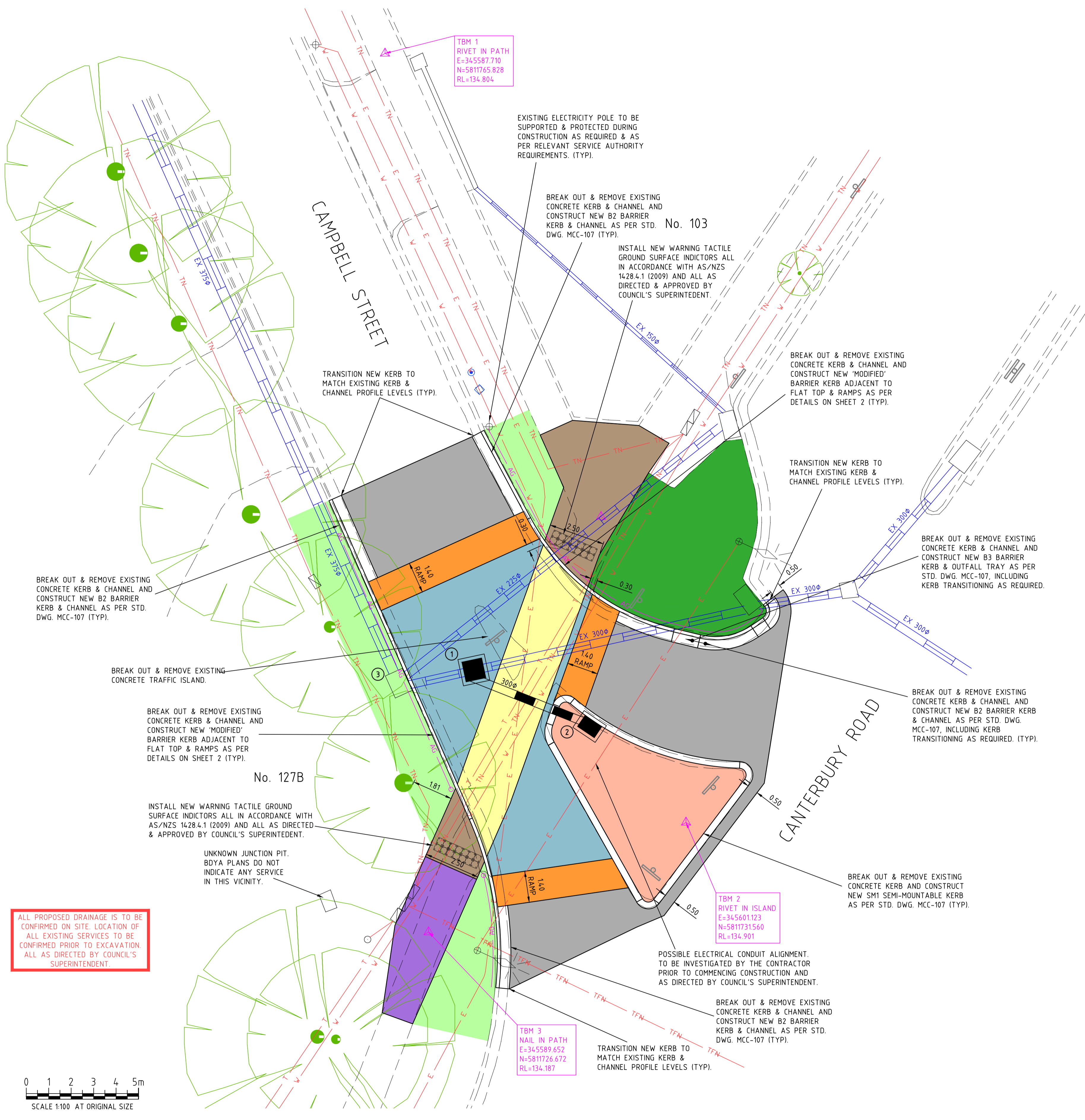
**WARNING**  
BEWARE OF UNDERGROUND SERVICES  
THE LOCATION OF UNDERGROUND SERVICES SHOWN ARE APPROXIMATE ONLY AND THERE IS NO GUARANTEE IS GIVEN THAT ALL SERVICES ARE SHOWN. THE CONTRACTOR MUST VERIFY ALL SERVICES ON SITE PRIOR TO ANY EXCAVATION WORK.



**NOTE:**  
ALL NOTED "ABANDONED" SERVICES INCLUDING GAS MAINS, WATER MAINS, ETC. - THE CONTRACTOR SHALL BE RESPONSIBLE TO CONFIRM THAT THESE SERVICES ARE ABANDONED, INCLUDING LIAISING WITH THE RELEVANT AUTHORITY PRIOR TO COMMENCING CONSTRUCTION.



—	EX TELSTRA OPTIC FIBRE	—	EX HIGH PRESSURE GAS MAIN	—	EX DRAIN & PIT	—	TELECOM PILLAR	—	TRAFFIC SIGNAL PIT
—	EX TELSTRA CABLE & PIT	—	EX HOUSE DRAIN	—	PROPOSED DRAIN & PIT	—	EXISTING POST	—	TRAFFIC SIGNAL POLE
—	EX TELSTRA OPTIC FIBRE	—	STOP VALVE	—	EX SIGN	—	EXISTING BOLLARD	—	UNCLASSIFIED PIT
—	EX SEWER & PIT	—	FIRE FLUG	—	EX SIGN	—	RUBBISH BIN	—	LIMIT OF WORKS
—	EX WATER MAIN	—	FIRE HYDRANT (ABOVE GROUND)	—	EXISTING BOLLARD	—	PSM	—	STN/TBM
—	EX ABANDONED WATER MAIN	—	FIRE HYDRANT (GROUND LEVEL)	—	RUBBISH BIN	—		NO.	AMENDMENTS
—	EX GAS MAIN	—	ELECTRICITY SUPPLY POLE	—		—		DATE	
—	EX ABANDONED GAS MAIN	—	E.S.P. WITH LIGHT	—		—			
—	EX U/G ELECTRICITY CABLE	—	LIGHT POLE ONLY	—		—			
—	EX O/H ELECTRICITY CABLE	—		—		—			
—	EX TABLE DRAIN	—		—		—			



ALL PROPOSED DRAINAGE IS TO BE CONFIRMED ON SITE. LOCATION OF ALL EXISTING SERVICES TO BE CONFIRMED PRIOR TO EXCAVATION. ALL AS DIRECTED BY COUNCIL'S SUPERINTENDENT.

**CRE CONSULTING ENGINEERS PTY LTD**  
Civil • Municipal • Drainage • Project Management  
704 Mount Alexander Road, Moonee Ponds, Vic, 3039  
Phone: 0417 318 556  
Email: admin@creconsulting.com.au

DESIGNED : CRE	DATE : 26/07/23
CHECKED : DATE :	
SURVEYED: MOONLAND	DATE : JULY 2023
SURVEY DATUM : ARBITRARY	
SCALES : AS SHOWN	©A1

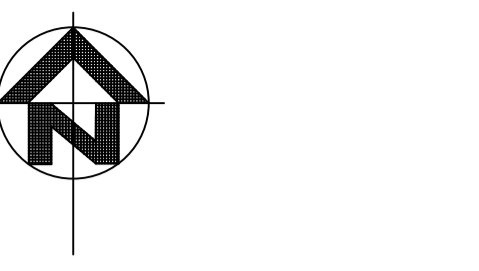
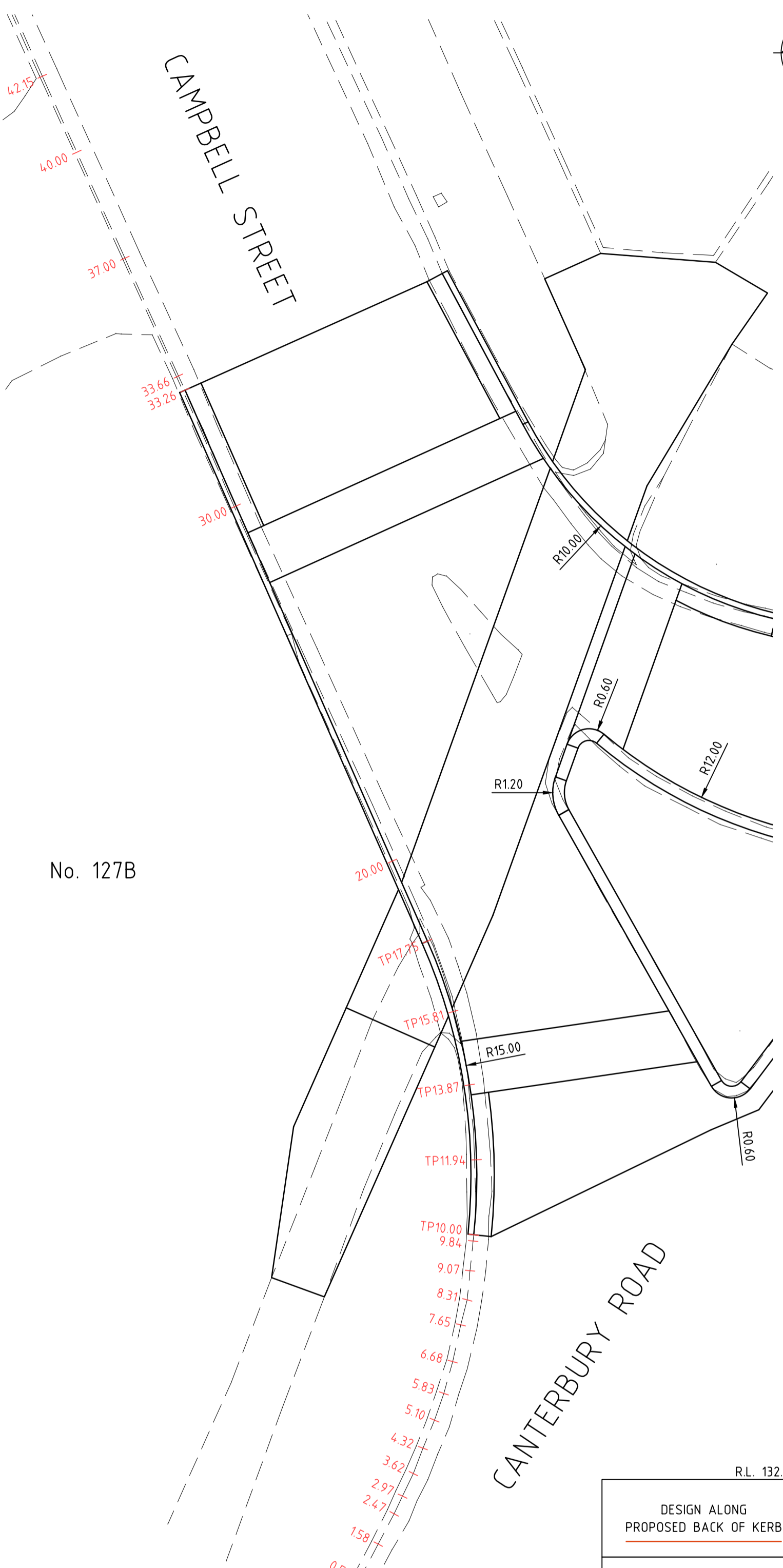


**CAMPBELL STREET / CANTERBURY ROAD, HEATHMONT  
RAISED PEDESTRIAN CROSSING**

DETAIL PLAN

CRE REF: 3042-(REV-P4).DWG
CRE REV. NO.: P4
AMEND. NO.: -
DWG. NO. <b>3042</b>
SHEET: 3 OF 9
SIZE: A1





0 1 2 3 4 5m  
SCALE 1:100 AT ORIGINAL SIZE

SETOUT DETAILS KERB RETURN SOUTH-WEST INVERT/FACE/LINE OF KERB

CHAINAGE	EASTING	NORTHING	REMARKS
10.00	345592.797	5811724.187	INVERT/FACE/LINE OF KERB (MATCH EX)
11.94	345592.869	5811726.122	INVERT/FACE/LINE OF KERB
13.87	345592.692	5811728.049	FACE/LINE OF KERB
15.81	345592.267	5811729.938	FACE/LINE OF KERB
17.75	345591.603	5811731.756	FACE/LINE OF KERB
20.00	345590.696	5811733.816	FACE/LINE OF KERB
30.00	345586.667	5811742.969	INVERT/FACE/LINE OF KERB
33.26	345585.352	5811745.956	INVERT/FACE/LINE OF KERB (MATCH EX)

No. 127B

VERTICAL 1:20  
AT ORIGINAL SIZE  
HORIZONTAL 1:50  
AT ORIGINAL SIZE

**NOTE:**  
ALL NOTED "ABANDONED" SERVICES INCLUDING GAS MAINS, WATER MAINS, ETC. - THE CONTRACTOR SHALL BE RESPONSIBLE & CONFIRM THAT THESE SERVICES ARE ABANDONED, INCLUDING LIAISING WITH THE RELEVANT AUTHORITY PRIOR TO COMMENCING CONSTRUCTION.

**WARNING**  
BEWARE OF UNDERGROUND SERVICES  
THE LOCATION OF UNDERGROUND SERVICES SHOWN ARE APPROXIMATE ONLY AND THEIR EXACT POSITION SHOULD BE PROVEN ON SITE. NO GUARANTEE IS GIVEN THAT ALL SERVICES ARE SHOWN. THE CONTRACTOR MUST VERIFY ALL SERVICES ON SITE PRIOR TO ANY EXCAVATION WORK.



CHAINAGE	PROPOSED BACK OF KERB (RL)	EXISTING BACK OF KERB (RL)	PROPOSED INVERT (RL)	EXISTING INVERT (RL)	CHAINAGE	PROPOSED BACK OF KERB (RL)	EXISTING BACK OF KERB (RL)	PROPOSED INVERT (RL)	EXISTING INVERT (RL)	CHAINAGE	PROPOSED BACK OF KERB (RL)	EXISTING BACK OF KERB (RL)	PROPOSED INVERT (RL)	EXISTING INVERT (RL)	CHAINAGE	PROPOSED BACK OF KERB (RL)	EXISTING BACK OF KERB (RL)	PROPOSED INVERT (RL)	EXISTING INVERT (RL)
7.65	134.234	134.234	134.087	134.087	19.40	134.479	134.519	134.459	134.459	29.25	134.378	134.378	134.318	134.318	32.26	134.338	134.338	134.338	134.338
8.31	134.254	134.254	134.108	134.108	20.00	134.488	134.520	134.458	134.458	30.00	134.369	134.369	134.368	134.368	33.26	134.368	134.368	134.368	134.368
9.07	134.284	134.284	134.139	134.139															
9.84	134.313	134.313	134.173	134.173															
10.00	134.325	134.294	134.180	134.180															
11.94	134.386	134.315	134.253	134.238															
13.87	134.439	134.387	134.302	134.289															
15.81	134.427	134.414	134.307	134.304															
17.75	134.372	134.421	134.357	134.372															
19.40	134.479	134.479	134.390	134.391															
20.00	134.488	134.520	134.458	134.488															
22.28	134.538	134.515	134.439	134.538															
27.85	134.492	134.413	134.392	134.492															
29.25	134.379	134.413	134.379	134.413															
30.00	134.406	134.406	134.372	134.406															
32.26	134.368	134.368	134.368	134.368															
33.26	134.347	134.347	134.347	134.347															
37.00	134.304	134.304	134.271	134.304															

NO.	AMENDMENTS	DATE

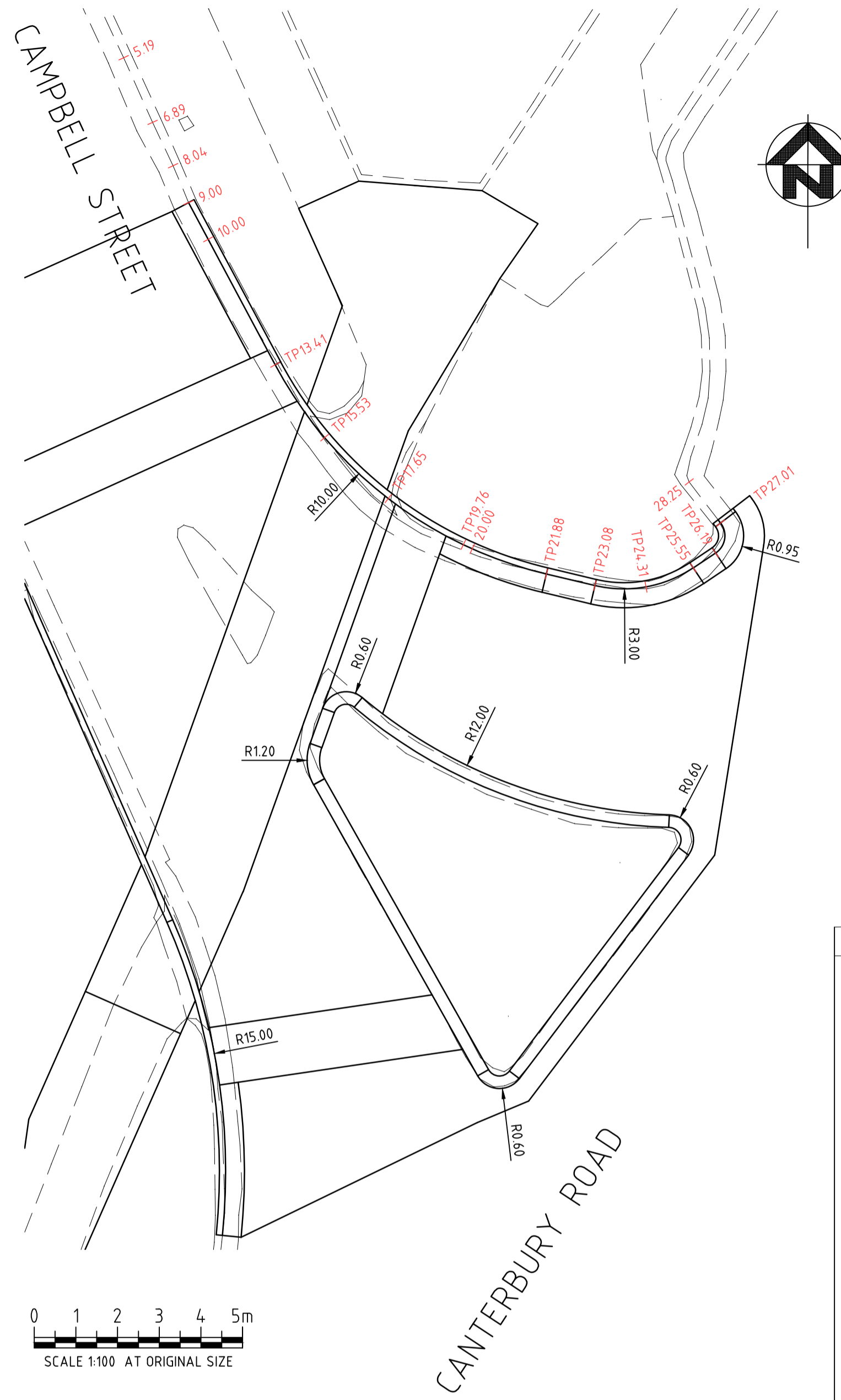
**CRE**  
CRE CONSULTING ENGINEERS PTY LTD  
Civil • Municipal • Drainage • Project Management  
704 Mount Alexander Road, Moonee Ponds, Vic, 3039  
Phone: 0417 318 556  
Email: admin@creconsulting.com.au

DESIGNED : CRE  
DATE : 26/07/23  
CHECKED :  
DATE :  
SURVEYED: MOONLAND  
DATE : JULY 2023  
SURVEY DATUM : ARBITRARY  
SCALES : AS SHOWN @A1



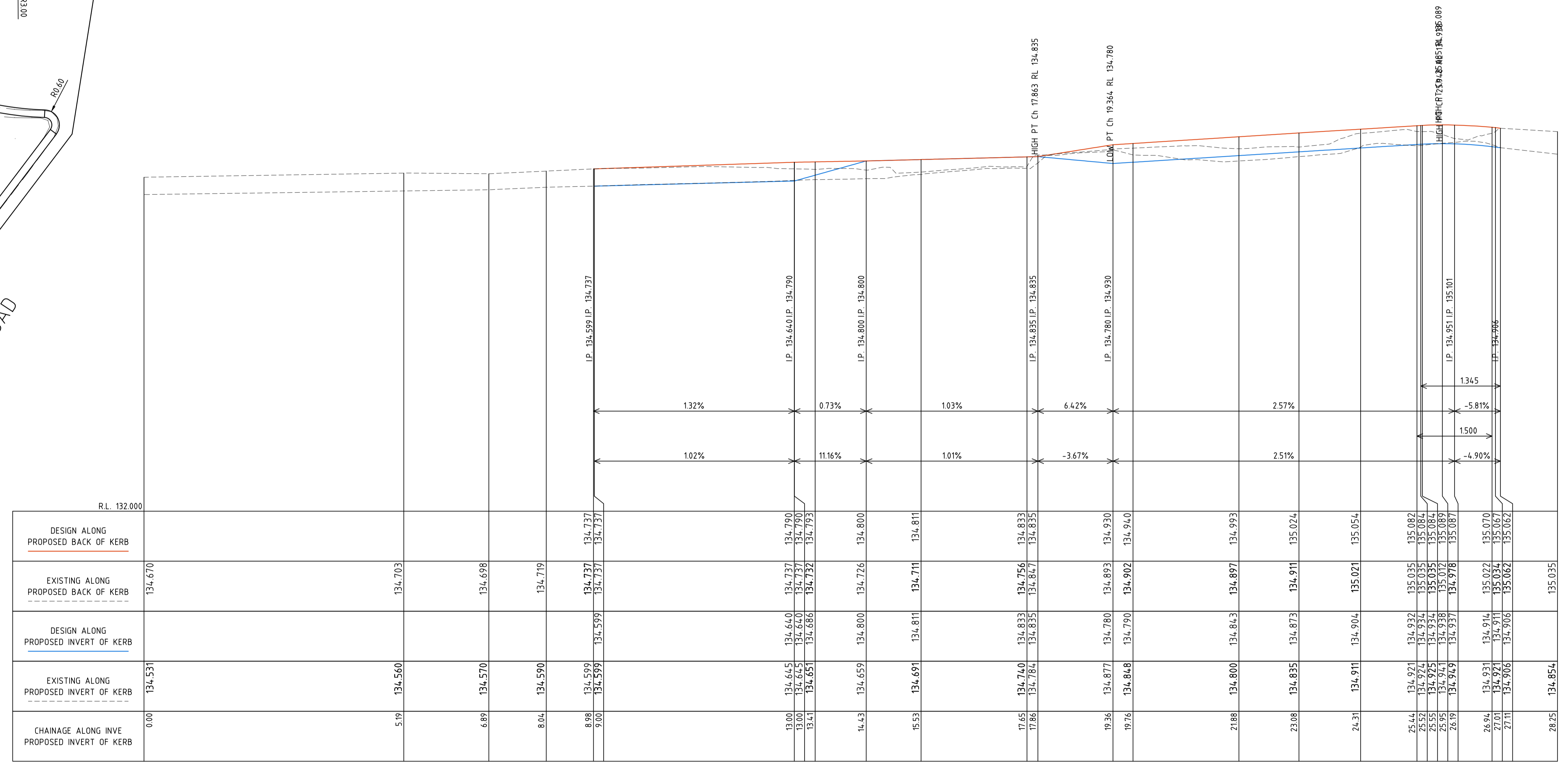
CAMPBELL STREET / CANTERBURY ROAD, HEATHMONT  
RAISED PEDESTRIAN CROSSING  
KERB RETURN LONGITUDINAL SECTIONS

CRE REF: 3042-(REV-P4).DWG
CRE REV. NO.: P4
AMEND. NO.: -
DWG. NO. 3042
SHEET: 5 OF 9
SIZE: A1



SETOUT DETAILS KERB RETURN NOUTH-EAST INVERT/FACE/LINE OF KERB

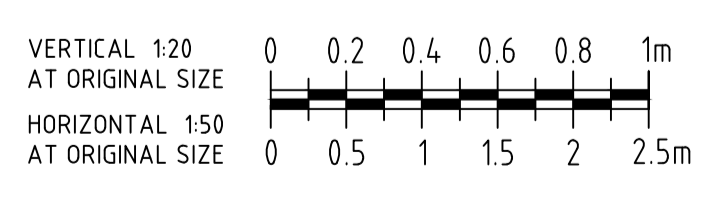
CHAINAGE	EASTING	NORTHING	REMARKS
9.00	345591.985	5811748.963	INVERT/FACE/LINE OF KERB (MATCH EX)
10.00	345592.456	5811748.080	INVERT/FACE/LINE OF KERB
13.41	345594.063	5811745.070	FACE/LINE OF KERB
15.53	345595.250	5811743.322	FACE/LINE OF KERB
17.65	345596.778	5811741.862	FACE/LINE OF KERB
19.76	345598.579	5811740.755	INVERT/FACE/LINE OF KERB
20.00	345598.793	5811740.656	INVERT/FACE/LINE OF KERB
21.88	345600.571	5811740.052	INVERT/FACE/LINE OF KERB
23.08	345601.738	5811739.774	INVERT/FACE/LINE OF KERB
24.31	345602.962	5811739.740	INVERT/FACE/LINE OF KERB
25.55	345604.098	5811740.198	INVERT/FACE/LINE OF KERB
26.19	345604.633	5811740.556	INVERT/FACE/LINE OF KERB
27.01	345604.752	5811741.275	INVERT/FACE/LINE OF KERB (MATCH EX)



**WARNING**  
BEWARE OF UNDERGROUND SERVICES  
THE LOCATION OF UNDERGROUND SERVICES SHOWN ARE APPROXIMATE ONLY AND THEIR EXACT POSITION SHOULD BE PROVIDED ON SITE. NO GUARANTEE IS GIVEN THAT ALL SERVICES ARE SHOWN. THE CONTRACTOR MUST VERIFY ALL SERVICES ON SITE PRIOR TO ANY EXCAVATION WORK.



**NOTE:**  
ALL NOTED "ABANDONED" SERVICES INCLUDING GAS MAINS, WATER MAINS, ETC. - THE CONTRACTOR SHALL BE RESPONSIBLE & CONFIRM THAT THESE SERVICES ARE ABANDONED, INCLUDING LIAISING WITH THE RELEVANT AUTHORITY PRIOR TO COMMENCING CONSTRUCTION.



LEGEND	DESCRIPTION
—T—	EX TELSTRA OPTIC FIBRE
—T—	EX TELSTRA CABLE & PIT
—T—	EX TELSTRA OPTIC FIBRE
—S—	EX SEWER & PIT
—W—	EX WATER MAIN
—ABW—	EX ABANDONED WATER MAIN
—G—	EX GAS MAIN
—ABG—	EX ABANDONED GAS MAIN
—E—	EX U/G ELECTRICITY CABLE
—E—	EX O/H ELECTRICITY CABLE
—	EX TABLE DRAIN
—HPC—	EX HIGH PRESSURE GAS MAIN
—	EX DRAIN & PIT
—	PROPOSED DRAIN & PIT
—HD—	HOUSE DRAIN
—	STOP VALVE
—	FIRE FLUG
—	FIRE HYDRANT (ABOVE GROUND)
—	FIRE HYDRANT (GROUND LEVEL)
—	ELECTRICITY SUPPLY POLE
—	E.S.P. WITH LIGHT
—	LIGHT POLE ONLY
—	TELECOM PILLAR
—	EXISTING POST
—	FENCE
—	EX. SIGN
—	EXISTING BOLLARD
—	RUBBISH BIN
—	PSM
—	STN/TBM
—	TRAFFIC SIGNAL PIT
—	TRAFFIC SIGNAL POLE
—	UNCLASSIFIED PIT
—	TREE
—	LIMIT OF WORKS

NO.	AMENDMENTS	DATE

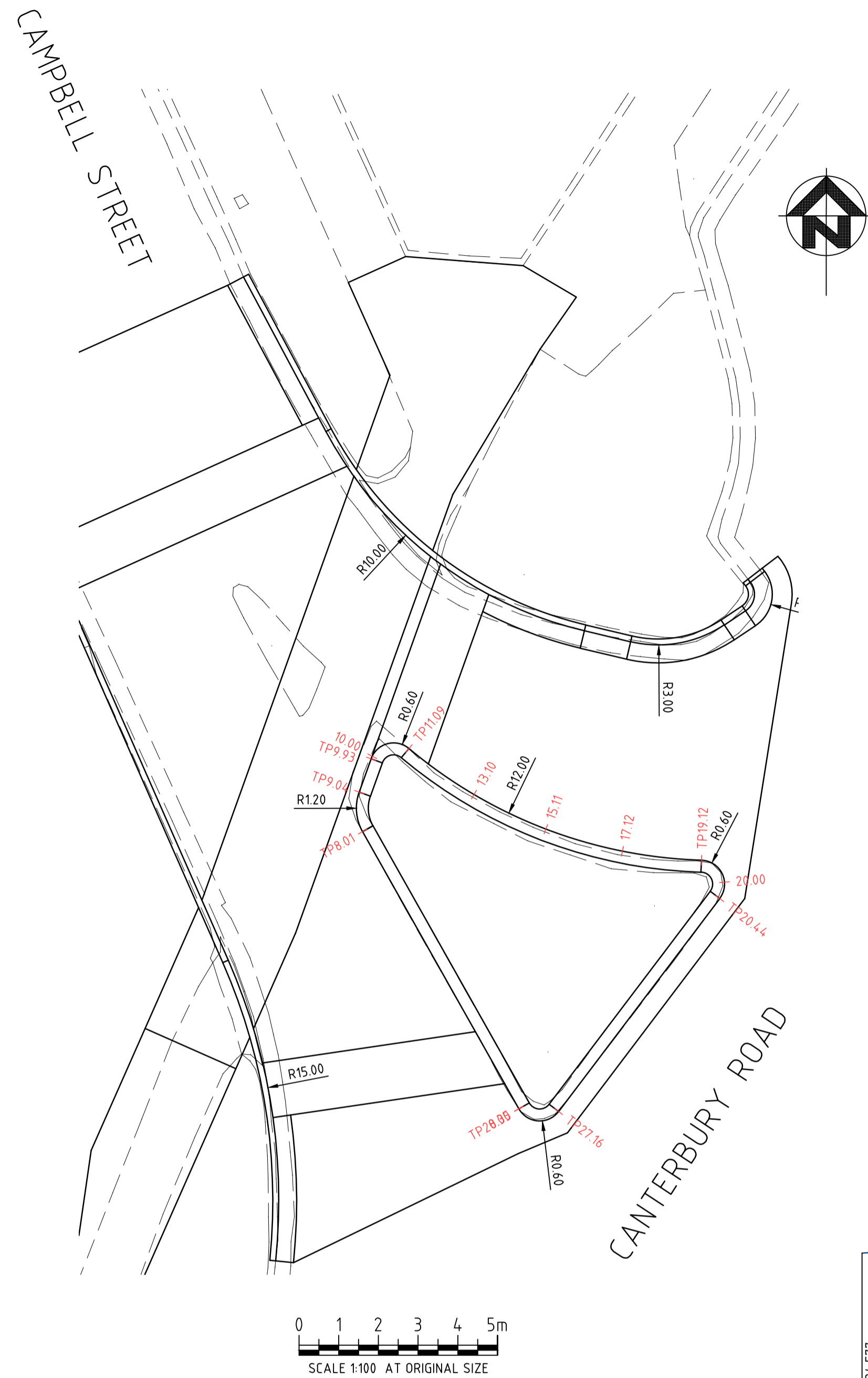
**CRE**  
CRE CONSULTING ENGINEERS PTY LTD  
Civil • Municipal • Drainage • Project Management  
704 Mount Alexander Road, Moonee Ponds, Vic, 3039  
Phone: 0417 318 556  
Email: admin@creconsulting.com.au

DESIGNED : CRE	DATE : 26/07/23
CHECKED :	DATE :
SURVEYED: MOONLAND	DATE : JULY 2023
SURVEY DATUM : ARBITRARY	
SCALES : AS SHOWN	©A1



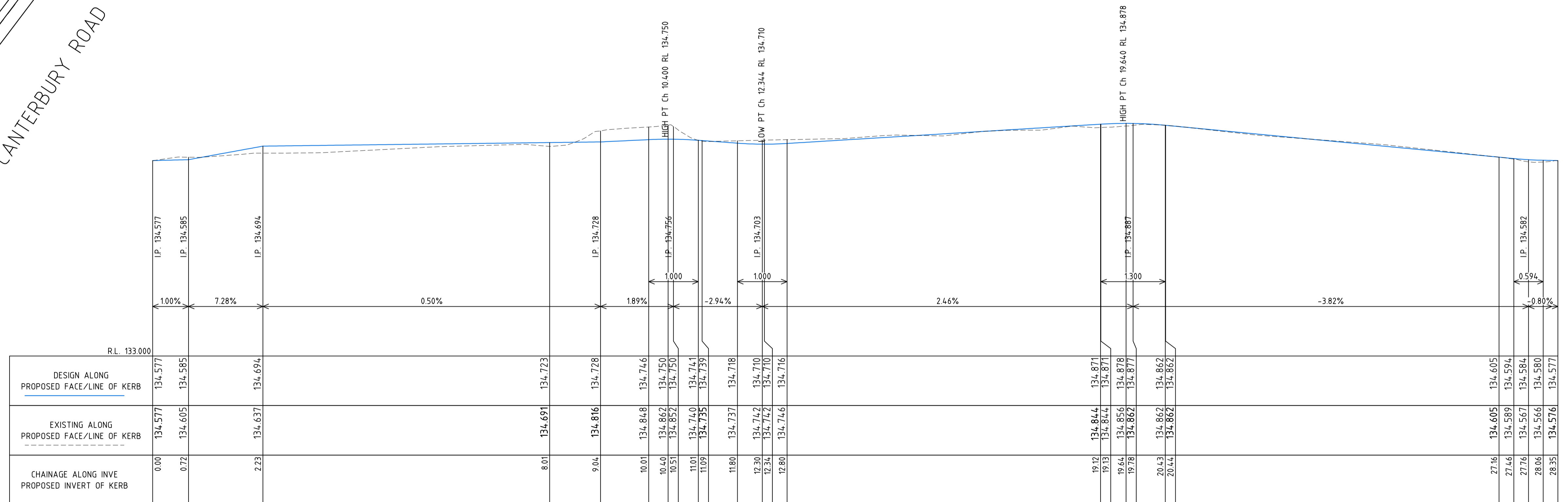
CLIENT:  
**CAMPBELL STREET / CANTERBURY ROAD, HEATHMONT**  
**RAISED PEDESTRIAN CROSSING**  
**KERB RETURN LONGITUDINAL SECTIONS**

CRE REF: 3042-(REV-P4).DWG
CRE REV. NO.: P4
AMEND. NO.: -
DWG. NO. <b>3042</b>
SHEET: 6 OF 9
SIZE: A1



SETOUT DETAILS TRAFFIC ISLAND

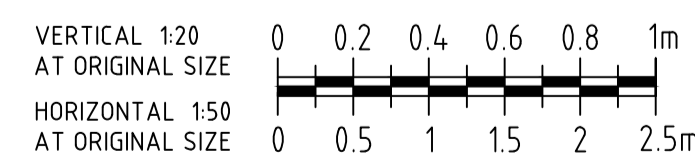
CHAINAGE	EASTING	NORTHING	REMARKS
0.00	345598.921	5811728.018	FACE/LINE OF KERB
8.01	345594.987	5811734.996	FACE/LINE OF KERB
9.04	345594.902	5811735.988	FACE/LINE OF KERB
9.93	345595.202	5811736.829	FACE/LINE OF KERB
10.00	345595.230	5811736.893	FACE/LINE OF KERB
11.09	345596.154	5811737.087	FACE/LINE OF KERB
13.10	345597.792	5811735.927	FACE/LINE OF KERB
15.11	345599.601	5811735.056	FACE/LINE OF KERB
17.12	345601.529	5811734.500	FACE/LINE OF KERB
19.12	345603.523	5811734.272	FACE/LINE OF KERB
20.00	345604.103	5811733.721	FACE/LINE OF KERB
20.44	345603.983	5811733.310	FACE/LINE OF KERB
27.16	345599.924	5811727.946	FACE/LINE OF KERB
28.35	345598.923	5811728.014	FACE/LINE OF KERB



**WARNING**  
BEWARE OF UNDERGROUND SERVICES  
THE LOCATION OF UNDERGROUND SERVICES SHOWN ARE APPROXIMATE ONLY AND THERE IS NO GUARANTEE IS GIVEN THAT ALL SERVICES ARE SHOWN. THE CONTRACTOR MUST VERIFY ALL SERVICES ON SITE PRIOR TO ANY EXCAVATION WORK.



**NOTE:**  
ALL NOTED "ABANDONED" SERVICES INCLUDING GAS MAINS, WATER MAINS, ETC. - THE CONTRACTOR SHALL BE RESPONSIBLE & CONFIRM THAT THESE SERVICES ARE ABANDONED, INCLUDING LIAISING WITH THE RELEVANT AUTHORITY PRIOR TO COMMENCING CONSTRUCTION.



LEGEND	DESCRIPTION
—T—	EX TELSTRA OPTIC FIBRE
—T—	EX TELSTRA CABLE & PIT
—T—	EX TELSTRA OPTIC FIBRE
—S—	EX SEWER & PIT
—W—	EX WATER MAIN
—AW—	EX ABANDONED WATER MAIN
—G—	EX GAS MAIN
—AG—	EX ABANDONED GAS MAIN
—E—	EX U/G ELECTRICITY CABLE
—E—	EX O/H ELECTRICITY CABLE
—E—	EX TABLE DRAIN
—H—	EX HIGH PRESSURE GAS MAIN
—D—	EX DRAIN & PIT
—D—	PROPOSED DRAIN & PIT
—H—	HOUSE DRAIN
—S—	STOP VALVE
—F—	FIRE FLUG
—F—	FIRE HYDRANT (ABOVE GROUND)
—F—	FIRE HYDRANT (GROUND LEVEL)
—E—	ELECTRICITY SUPPLY POLE
—E—	E.S.P. WITH LIGHT
—E—	LIGHT POLE ONLY
—P—	TELECOM PILLAR
—P—	EXISTING POST
—P—	EX SIGN
—P—	EXISTING BOLLARD
—P—	RUBBISH BIN
—P—	PSM
—P—	STN/TBM
—P—	TRAFFIC SIGNAL PIT
—P—	TRAFFIC SIGNAL POLE
—P—	UNCLASSIFIED PIT
—P—	FENCE
—P—	EXISTING BOLLARD
—P—	RUBBISH BIN
—P—	LIMIT OF WORKS

**CRE**  
CRE CONSULTING ENGINEERS PTY LTD  
Civil • Municipal • Drainage • Project Management  
704 Mount Alexander Road, Moonee Ponds, Vic, 3039  
Phone: 0417 318 556  
Email: admin@creconsulting.com.au

DESIGNED : CRE DATE : 26/07/23  
CHECKED : DATE :  
SURVEYED: MOONLAND DATE : JULY 2023  
SURVEY DATUM : ARBITRARY  
SCALES : AS SHOWN @A1



CAMPBELL STREET / CANTERBURY ROAD, HEATHMONT  
RAISED PEDESTRIAN CROSSING  
KERB RETURN LONGITUDINAL SECTIONS

CRE REF: 3042-(REV-P4).DWG
CRE REV. NO.: P4
AMEND. NO.: -
DWG. NO. 3042
SHEET: 7 OF 9 SIZE: A1

1 2

Electrical Conduit Exact Location TBC  
Telstra & NBN conduits Exact Location TBC  
Water Main Exact Location TBC

ALL PROPOSED DRAINAGE IS TO BE CONFIRMED ON SITE. LOCATION OF ALL EXISTING SERVICES TO BE CONFIRMED PRIOR TO EXCAVATION ALL AS DIRECTED BY COUNCIL'S SUPERINTENDENT.

EX. 300Ø IL 132.563 (Interpolated)

CAPACITY (l/sec) 193

PIPE DETAILS  
PIPE GRADE  
DATUM RL 132

DEPTH TO INVERT	2.093	1.106	1.000
INVERT LEVEL	132.563	133.550	133.836
FINISHED SURFACE	134.656	134.836	134.836
EXISTING SURFACE	134.603	134.800	134.800
CHAINAGE	0.000	5.743	5.743

SCALES: HORIZONTAL 1:200 VERTICAL 1:20

DRAINAGE PIT SCHEDULE

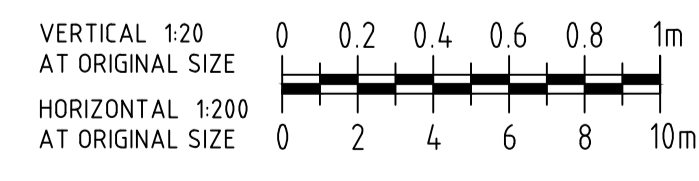
PIT NO.	TYPE		INTERNAL WIDTH	INTERNAL LENGTH	OUTLET DIAMETER	OUTLET INVERT RL	INLET DIAMETER	INLET INVERT RL	PIT DEPTH	FSL	EASTING	NORTHING	REMARKS	PIT NO.
	EXISTING	PROPOSED	(mm)	(mm)	(mm)	(m)	(mm)	(m)	(m)	(m)	(m)	(m)		
1		JP	900	900	EX 300	132.563	300	133.550	2.093	134.656	345591.670	5811738.356	CONSTRUCT NEW JP (900x900) WITH CLASS D GATIC LID AS PER STD. DWG. MCC-201. RECONNECT EXISTING 300Ø PIPE TO NEW PIT CHAMBER AS REQUIRED.	1
2		SEP	600	900	300	133.836	EX 300	132.563	1.000	134.836	345596.830	5811735.835	CONSTRUCT NEW SEP (600x900) AS PER STD. DWG. MCC-203.	2
3	SEP		EX	EX	EX	EX	EX	EX	EX	EX	EX	EX	ADJUST EXISTING SEP TO MATCH NEW FINISHED SURFACE LEVELS & KERB ALIGNMENT. PROVIDE NEW CLASS B FIBREGLASS LID.	3

- NOTES:
- PIT FLOORS TO BE SHAPED TO PROVIDE SMOOTH FLOW THROUGH PITS.
  - ALL EXISTING PIPE LEVELS ARE TO BE CONFIRMED BY THE CONTRACTOR PRIOR TO COMMENCING CONSTRUCTION. COUNCIL'S SUPERINTENDENT SHALL BE NOTIFIED IF THERE ARE ANY DISCREPANCIES PRIOR TO COMMENCING CONSTRUCTION.
  - ALL PIT SETOUT IS TO THE CENTRE OF THE PIT CHAMBER, UNLESS NOTED OTHERWISE IN THE REMARKS COLUMN.

**WARNING**  
BEWARE OF UNDERGROUND SERVICES  
THE LOCATION OF UNDERGROUND SERVICES SHOWN ARE APPROXIMATE ONLY AND THEIR EXACT POSITION SHOULD BE PROVEN ON SITE. NO GUARANTEE IS GIVEN THAT ALL SERVICES ARE SHOWN. THE CONTRACTOR MUST VERIFY ALL SERVICES ON SITE PRIOR TO ANY EXCAVATION WORK.



NOTE:  
ALL NOTED "ABANDONED" SERVICES INCLUDING GAS MAINS, WATER MAINS, ETC. - THE CONTRACTOR SHALL BE RESPONSIBLE & CONFIRM THAT THESE SERVICES ARE ABANDONED, INCLUDING LIAISING WITH THE RELEVANT AUTHORITY PRIOR TO COMMENCING CONSTRUCTION.



LEGEND	EXISTING SERVICES		PROPOSED SERVICES	
	SYMBOL	DESCRIPTION	SYMBOL	DESCRIPTION
—T—	EX TELSTRA OPTIC FIBRE	—H—	EX HIGH PRESSURE GAS MAIN	
—T—	EX TELSTRA CABLE & PIT	—HD—	EX HOUSE DRAIN	
—T—	EX TELSTRA OPTIC FIBRE	—HD—	PROPOSED DRAIN & PIT	
—S—	EX SEWER & PIT	—F—	FENCE	
—W—	EX WATER MAIN	—E—	EX SIGN	
—AW—	EX ABANDONED WATER MAIN	—B—	EXISTING BOLLARD	
—G—	EX GAS MAIN	—R—	RUBBISH BIN	
—AG—	EX ABANDONED GAS MAIN	—T—	TREE	
—E—	EX U/G ELECTRICITY CABLE	—L—	LIMIT OF WORKS	
—E—	EX D/H ELECTRICITY CABLE	—P—	PSM	
—E—	EX TABLE DRAIN	—S—	STN/TBM	
		—L—	LIGHT POLE ONLY	

**CRE**  
CRE CONSULTING ENGINEERS PTY LTD  
Civil • Municipal • Drainage • Project Management  
704 Mount Alexander Road, Moonee Ponds, Vic, 3039  
Phone: 0417 318 556  
Email: admin@creconsulting.com.au

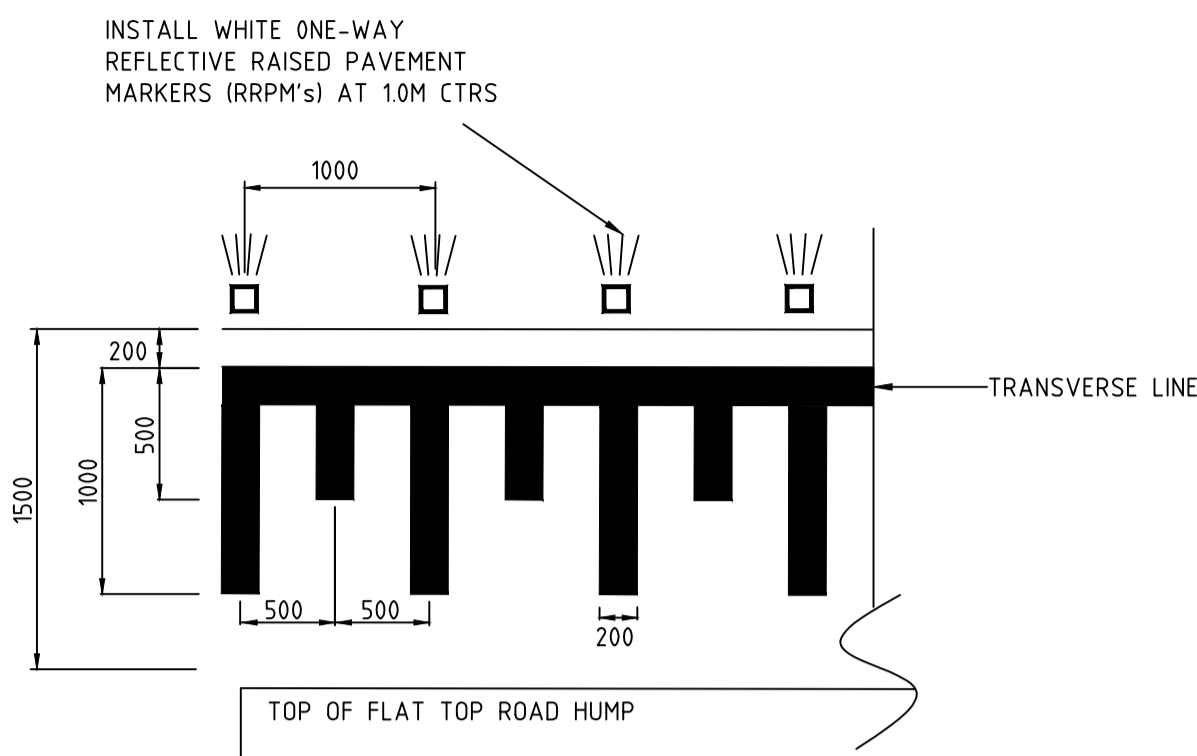
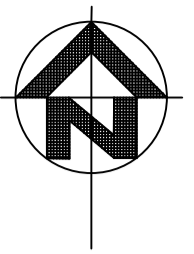
DESIGNED : CRE	DATE : 26/07/23
CHECKED :	
DATE :	
SURVEYED: MOONLAND	DATE : JULY 2023
SURVEY DATUM : ARBITRARY	
SCALES : AS SHOWN	©A1



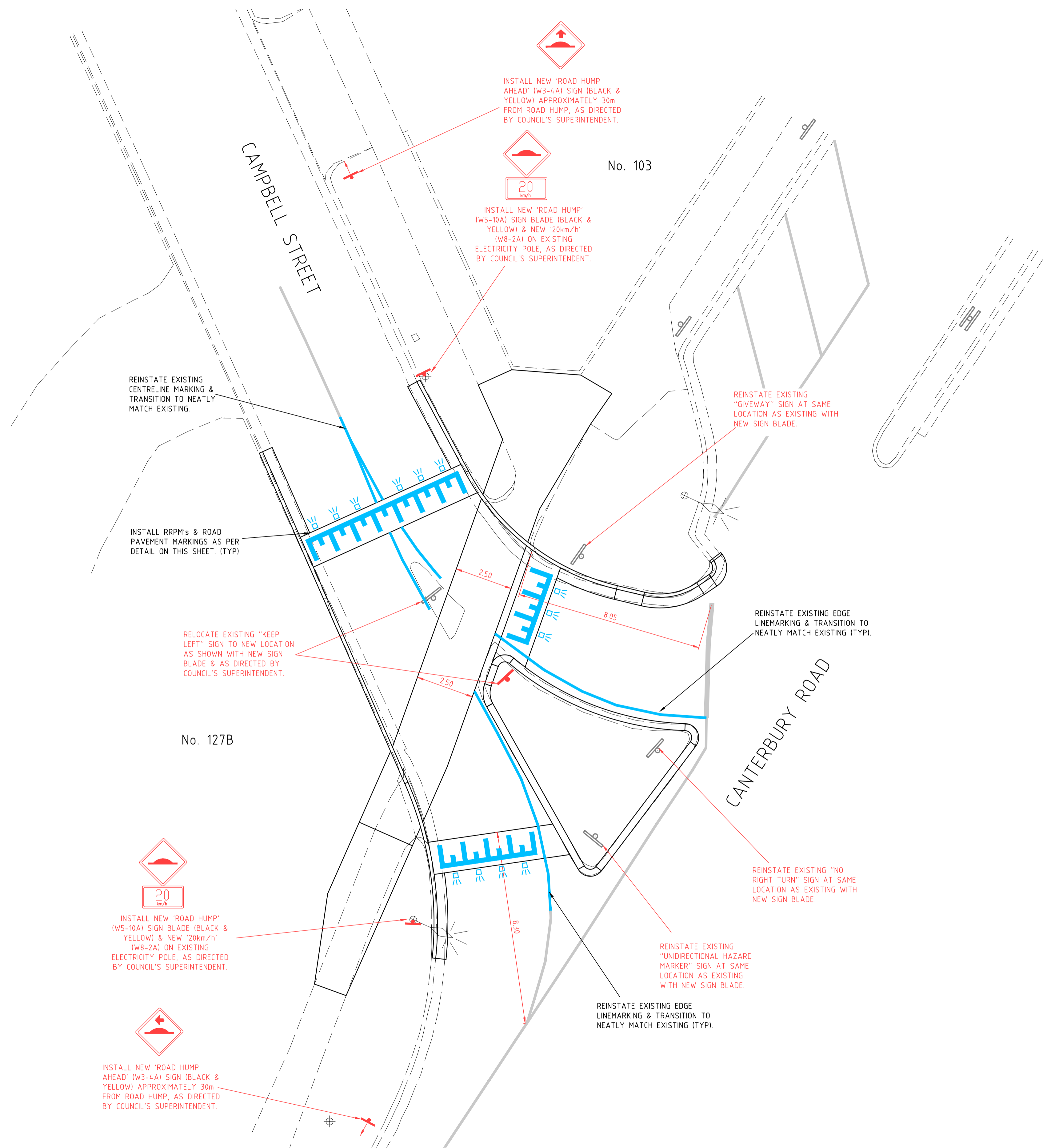
CAMPBELL STREET / CANTERBURY ROAD, HEATHMONT  
RAISED PEDESTRIAN CROSSING  
DRAINAGE LONGITUDINAL SECTION & PIT SCHEDULE

CRE REF: 3042-(REV-P4).DWG
CRE REV. NO.: P4
AMEND. NO.: -
DWG. NO. <b>3042</b>
SHEET: 8 OF 9
SIZE: A1





PAVEMENT MARKINGS AND R.R.P.M'S  
FOR ROAD HUMPS  
NOT TO SCALE



**WARNING**  
BEWARE OF UNDERGROUND SERVICES  
THE LOCATION OF UNDERGROUND SERVICES SHOWN ARE APPROXIMATE ONLY AND THERE IS NO GUARANTEE IS GIVEN THAT ALL SERVICES ARE SHOWN. THE CONTRACTOR MUST VERIFY ALL SERVICES ON SITE PRIOR TO ANY EXCAVATION WORK.



**NOTE:**  
ALL NOTED "ABANDONED" SERVICES INCLUDING GAS MAINS, WATER MAINS, ETC. - THE CONTRACTOR SHALL BE RESPONSIBLE & CONFIRM THAT THESE SERVICES ARE ABANDONED, INCLUDING LIAISING WITH THE RELEVANT AUTHORITY PRIOR TO COMMENCING CONSTRUCTION.



LEGEND	EX TELSTRA OPTIC FIBRE		EX HIGH PRESSURE GAS MAIN		EX TELSTRA CABLE & PIT		EX DRAIN & PIT		TELECOM PILLAR		TRAFFIC SIGNAL PIT	
	T	---	---	---	---	---	---	---	---	---	---	---
TOF	---	---	---	---	---	---	---	---	---	---	---	---
S	---	---	---	---	---	---	---	---	---	---	---	---
W	---	---	---	---	---	---	---	---	---	---	---	---
AW	---	---	---	---	---	---	---	---	---	---	---	---
G	---	---	---	---	---	---	---	---	---	---	---	---
AG	---	---	---	---	---	---	---	---	---	---	---	---
E	---	---	---	---	---	---	---	---	---	---	---	---
U/G	---	---	---	---	---	---	---	---	---	---	---	---
D/H	---	---	---	---	---	---	---	---	---	---	---	---
O/H	---	---	---	---	---	---	---	---	---	---	---	---
T	---	---	---	---	---	---	---	---	---	---	---	---
D	---	---	---	---	---	---	---	---	---	---	---	---
PSM	---	---	---	---	---	---	---	---	---	---	---	---
STN/TBM	---	---	---	---	---	---	---	---	---	---	---	---
NO.	AMENDMENTS		DATE									

**CRE**  
CRE CONSULTING ENGINEERS PTY LTD  
Civil • Municipal • Drainage • Project Management  
704 Mount Alexander Road, Moonee Ponds, Vic, 3039  
Phone: 0417 318 556  
Email: admin@creconsulting.com.au

DESIGNED : CRE DATE : 26/07/23  
CHECKED : DATE :  
SURVEYED: MOONLAND DATE : JULY 2023  
SURVEY DATUM : ARBITRARY  
SCALES : AS SHOWN @A1



CAMPBELL STREET / CANTERBURY ROAD, HEATHMONT  
RAISED PEDESTRIAN CROSSING  
LINEMARKING PLAN

CRE REF: 3042-(REV-P4).DWG
CRE REV. NO.: P4
AMEND. NO.: -
DWG. NO. <b>3042</b>
SHEET: 9 OF 9 SIZE: A1