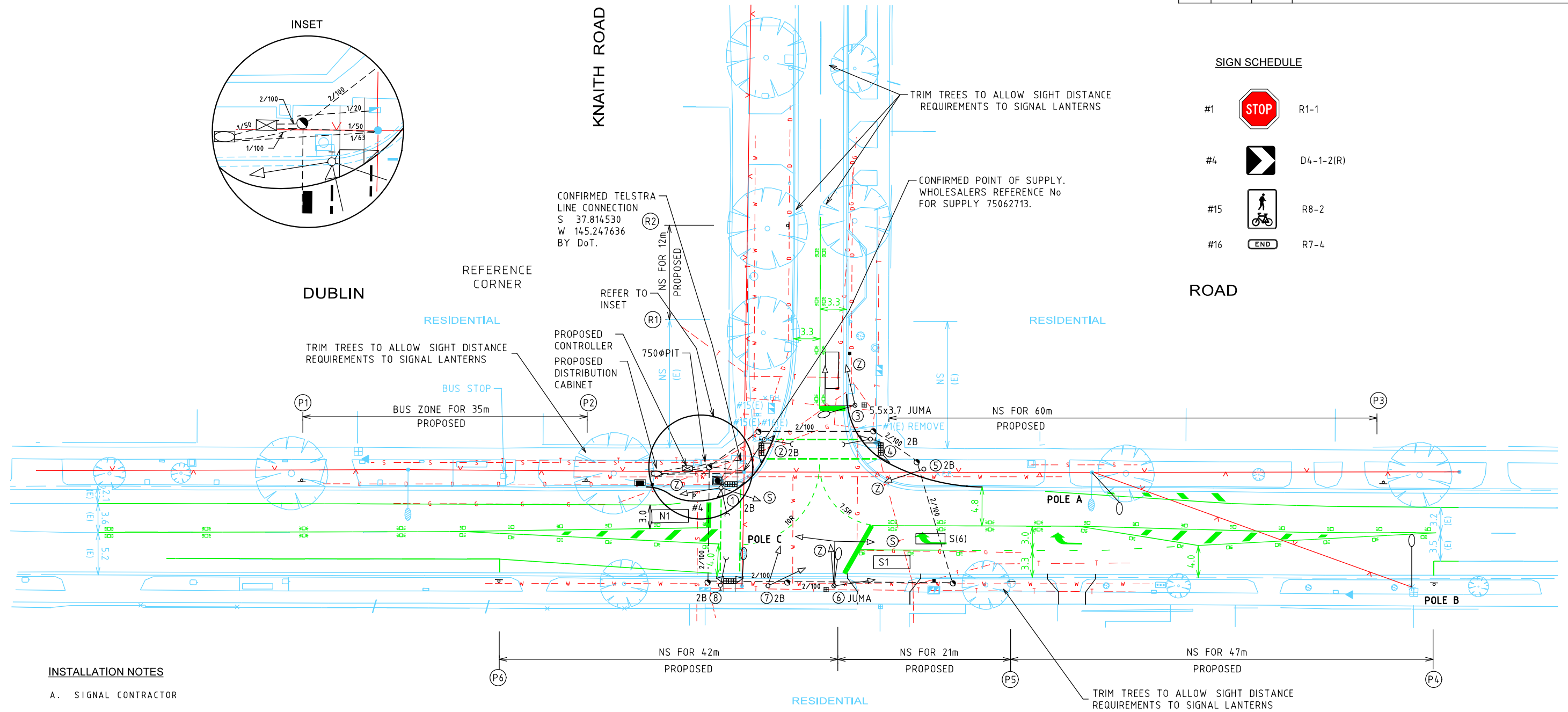


KNAITH ROAD

DUBLIN ROAD

SIGN SCHEDULE

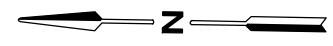
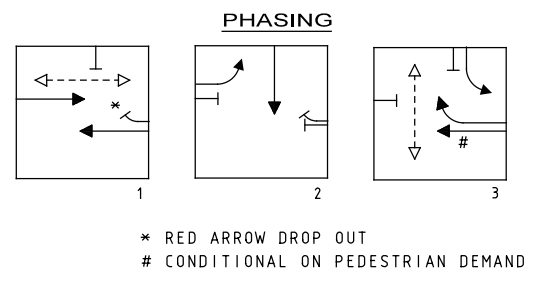
- #1 R1-1
- #4 D4-1-2(R)
- #15 R8-2
- #16 R7-4



INSTALLATION NOTES

- A. SIGNAL CONTRACTOR**
- SUPPLY AND INSTALL NEW HARDWARE AS SHOWN USING LED LANTERNS.
 - SUPPLY AND INSTALL TRAFFIC SIGNAL MAINS SUPPLY/METER CABINET AND CONNECT TO POINT OF SUPPLY.
 - SUPPLY AND INSTALL AUDIO TACTILE PEDESTRIAN DETECTORS (VARIABLE OUTPUT).
 - CONTRACTOR TO SUPPLY ALL THE ABOVE HARDWARE USING LED LANTERNS.
- B. ROADWORKS CONTRACTOR**
- CONSTRUCT ROADWORKS AS SHOWN.
 - CONSTRUCT 4 DDA COMPLIANT PRAM CROSSINGS IN ACCORDANCE WITH AS 1428.
 - INSTALL ROAD SIGNS AND REMOVE ANY REDUNDANT SIGNS.
 - PAVEMENT MARK AS SHOWN AND REMOVE ANY REDUNDANT MARKINGS.
 - SUPPLY AND INSTALL RRPMS AS SHOWN AND REMOVE ANY REDUNDANT MARKERS.
 - SUPPLY AND INSTALL PARKING SIGN POLES AND FACES P1, P2, P3, P4, P5 & P6
 - RELOCATE POLE AND FACE R1 TO R2.
 - SUPPLY AND INSTALLATION OF PUBLIC LIGHTING TO NEW JOINT USE POLES AND THE REMOVAL OF ANY REDUNDANT POLES OR EQUIPMENT. SEE GENERAL NOTES.
 - TRIM TREES AS SHOWN.
- C. VICROADS (DoT)**
- (i) METROPOLITAN SOUTH EAST REGION
- SUPPLY AND INSTALL NEW LED COMPATIBLE CONTROLLER. (DIMMING ENABLED).
 - CONNECT CONTROLLER TO SCATS.
- (ii) SIGNAL SERVICES - EAST
- PROGRAM NEW CONTROLLER.

- GENERAL NOTES. Continued**
- (iii) POLE A TO BE 10m MOUNTING HEIGHT, 5m ANGLED OUTREACH BRACKET WITH 70W LED LUMINAIRE.
 - (iii) POLE B TO BE 10m MOUNTING HEIGHT, 5m OUTREACH BRACKET WITH 70W LED LUMINAIRE.
 - (iv) POLE C TO BE 10m MOUNTING HEIGHT, 5m OUTREACH BRACKET WITH 70W LED LUMINAIRE



MELWAY MAP 50 B8
EAST RINGWOOD

NOTE
PROPOSED SIGNAL HARDWARE LOCATIONS ARE INDICATIVE ONLY
THE ACTUAL LOCATION OF PROPOSED PEDESTALS, CONDUIT FITS, CONDUITS, ETC. SHALL BE DETERMINED ON SITE AT THE PRE-INSTALLATION MEETING

WARNING
BEWARE OF UNDERGROUND SERVICES
THE LOCATIONS OF UNDERGROUND SERVICES ARE APPROXIMATE ONLY AND THEIR EXACT POSITION SHOULD BE PROVEN ON SITE. NO GUARANTEE IS GIVEN THAT ALL EXISTING SERVICES ARE SHOWN.



LEGEND

PEDESTAL - EXISTING, NEW, JOINT USE	TRAFFIC SIGNAL CONTROLLER	SEWERAGE PIT	FENCE
3 ASPECT LANTERN - 200mm, 300mm	CONDUIT WITH NUMBER/DUCT DIAMETER	F.H. FIRE - PLUG, HYDRANT	UNDERGROUND SEWER MAIN
MAST ARM (OUTREACH AS INDICATED)	PIT - CONDUIT, DETECTOR	GAS VALVE	UNDERGROUND ELECTRICITY
PEDESTRIAN PUSH BUTTON & LANTERN	POLE - TRAMWAY, ELECTRICITY	ELECTRICITY SUPPLY PIT	UNDERGROUND GAS
VEHICLE GROUP - ACTIVE, PROHIBITED	F.O. INTERNALLY ILLUMINATED SIGN - FIBRE OPTIC	UTILITY UNCLASSIFIED	UNDERGROUND WATER
PERMITTED PEDESTRIAN MOVEMENT	N.R.T. NO RIGHT TURN	TELECOMMUNICATIONS - PIT, PILLAR	UNDERGROUND TELECOMMUNICATIONS
PROPOSED STREET LIGHT	G.W.T.P. GIVE WAY TO PEDESTRIANS	DRAINAGE PIT - SIDE ENTRY, GRATED	TSGI - WARNING, DIRECTIONAL
EXISTING STREET LIGHT	N.S. NO STOPPING	OVERHEAD SERVICE	
DETECTOR LOOP - PROPOSED, EXISTING	PAVEMENT MARKER - RAISED, RAISED REFLECTIVE		

- GENERAL NOTES**
- BASE INFORMATION AND SERVICES FROM TAYLOR SURVEY FILE 01815-D1.DWG.
 - ALL DIMENSIONS ARE TO FACE OF KERB UNLESS SHOWN OTHERWISE.
 - LOCAL ROAD - DUBLIN RD (SPEED ZONE 60km/h)
LOCAL ROAD - KNAITH RD (SPEED ZONE 50 km/h)
 - PUBLIC LIGHTING (PUBLIC LIGHTING IN ACCORDANCE WITH CATEGORY V3 AS 1158.1.1)
 - (i) PEDESTAL 3 TO BE 8.5m JUMA, 10m MOUNTING HEIGHT, 3m OUTREACH BRACKET WITH 70W LED LUMINAIRE.
 - (ii) PEDESTAL 6 TO BE 8.5m JUMA, 10m MOUNTING HEIGHT, 3m OUTREACH BRACKET WITH 70W LED LUMINAIRE.

DESIGNED
R PHIBBS DEC 2019

APPROVED

SCALE HOR 0 5 10
METRES VER

TRAFFICWORKS
PTY LTD

1st Floor 132 Upper Heidelberg Road IVANHOE VIC. 3079
P.O. Box 417 IVANHOE VIC. 3079
Tel (03) 9490 5900 Fax (03) 9490 5910 www.trafficworks.com.au
TRAFFICWORKS DGN No. 190468-TSP-20-P5

CLIENT
MAROONDAH CITY COUNCIL

DUBLIN ROAD / KNAITH ROAD			
MAROONDAH COUNCIL			
TRAFFIC SIGNAL PLAN			
FILE NO. TM-060-MRH-2072	SITE NO. 2072	SHEET NO. 1 of 1	DRAWING NO. 787301
ISSUE			

05/21/20 10:10:36 I:\1920 Projects\190468\Design\190468-TSP-20-C1.dgn