

- WARNING -
CONTRACTOR TO VERIFY LOCATION; DEPTH/CLEARANCE AND ALIGNMENT OF OVERHEAD AND UNDERGROUND SERVICES. CONTRACTOR TO ACQUIRE CURRENT AND RELEVANT 'DIAL BEFORE YOU DIG' ONE CALL SERVICES. DRAWINGS AND ADHERE TO ALL REQUIREMENTS FOR WORKS NEAR SERVICES INCLUDING CLEARANCES, EASEMENTS AND INFORMING SERVICE AUTHORITIES PRIOR TO COMMENCEMENT OF WORKS. THE LOCATIONS OF UNDERGROUND SERVICES INDICATED IN THIS SET OF DRAWINGS ARE INDICATIVE ONLY. PIT LOCATIONS HAVE BEEN SURVEYED BY A LICENSED SURVEYOR.

- SITE DIMENSIONS -
CONTRACTOR TO SATISFY THEMSELVES OF SITE CONDITIONS, CHANGES IN LEVEL AND DIMENSIONS PRIOR TO FABRICATION OF SITE SPECIFIC ITEMS OR PRIOR TO ORDERING/PURCHASING MATERIALS. WHERE DISCREPANCIES EXIST BETWEEN DRAWINGS AND SITE CONDITIONS CONTRACTOR TO NOTIFY SUPERINTENDENT PRIOR TO COMMENCEMENT OF WORKS.

- COPYRIGHT AND INTELLECTUAL PROPERTY RIGHTS -
ENLOCUS RETAINS THE INTELLECTUAL PROPERTY RIGHT IN RELATION TO THE CONTRACT MATERIAL. THE DESIGN AS REPRESENTED BY THE DRAWING SET AND ALL DETAILS, INGENUITY AND INNOVATION REMAIN THE PROPERTY OF ENLOCUS. REFER TO CONTRACT FOR IRREVOCABLE LICENSE GRANTED TO THE CLIENT AND COPYRIGHT ARRANGEMENT. © ENLOCUS 2022

DRAWING STATUS:

PRE-CONSTRUCTION
NOT FOR CONSTRUCTION

REVISION STATUS:

B	100% Issue	24.07.24
A	Pre-Construction Issue For Approval	10.07.24

LANDSCAPE ARCHITECT CONSULTANT:

ENLOCUS
Ground Floor,
151 St Georges Rd,
Fitzroy North, Victoria 3066
T : 03 9482 2202
W : www.enlocus.com

CONSULTANTS:

STRUCTURAL ENGINEER
MATRIX ENGINEERING
GROUP P/L
24/37 Kellor Park Drive
Kellor Park, Victoria 3042
Tel : +613 9331 7522
www.matrixgroup.net.au

NOTES / LEGEND:

SECTION KEY NOTES:

01 CONTRACTOR TO VERIFY ALL DIMENSIONS AND SITE DIMENSIONS. ANY DISCREPANCIES TO BE REPORTED TO SUPERINTENDENT PRIOR TO PROCEEDING WITH WORKS.

SECTION KEY LEGEND:

50MM N.B. GALVANISED CHS COPING. ALL DIMENSIONS TO FRONT FACE OF COPING.

BLEND ZONE BOUNDARY. REFER TO SECTIONS CD100.

RC TRANSITION (QUARTER PIPE). REFER TO SECTIONS CD100.

RC FLAT BANK. REFER TO SECTIONS CD100.

RC ROLL-IN/MOGUL. REFER TO SECTIONS CD100.

REFER TO SECTIONS CD101 & 102.

REPRESENTS CONCRETE BLEND BETWEEN VARYING TRANSITIONS. ALL BLEND AREAS TO BE APPROVED BY ENLOCUS PRIOR TO CONCRETE POUR. TO INCLUDE AND NOT LIMITED TO SHAPE OF REQUIRED EARTHWORKS. REINFORCEMENT AND PROPOSED SHAPE AND METHOD OF CONSTRUCTION. BLENDING NEED TO BE CONSISTENT AND TO HAVE SEAMLESS CONNECTION TO ADJOINING TRANSITIONS. ANY FINISHED BLENDS OUTSIDE OF THESE TOLERANCES WILL BE DEMOLISHED AND REPOURED AT CONTRACTORS EXPENSE.

CONTRACTOR TO CROSS REFERENCE ALL PLANS TO ENSURE ALL INFORMATION MATCHES. DESIGNER (ENLOCUS PTY LTD) TO BE CONTACTED WITH ANY DISCREPANCIES OR REQUIRED CLARITY FOR APPROVAL IN WRITING PRIOR TO WORKS COMMENCING/CONTINUING.

- NOTE:
- CONTRACTOR TO VERIFY DEPTH/CLEARANCE AND ALIGNMENT OF ALL ABOVE AND UNDERGROUND SERVICES PRIOR TO COMMENCEMENT OF WORKS AND ADHERE TO ALL REQUIREMENTS FOR WORKS NEAR SERVICES AS PER EACH PROVIDER.
 - CONTRACTOR TO RETAIN AND PROTECT ALL SERVICES OUTSIDE OF SCOPE OF WORKS. MAKE GOOD ANY DAMAGES OCCURRED DURING CONSTRUCTION.
 - CONTRACTOR IS TO VISUALLY INSPECT EACH EXISTING PIT AND SERVICES IN THE PROPOSED SCOPE TO ENSURE IT IS IN GOOD CONDITION PRIOR TO PROCEEDING WITH WORKS.

CLIENT NAME:

MAROONDAL CITY COUNCIL
179 Maroondah Highway,
Ringwood VIC 3134

PROJECT NAME:

MAROONDAL SKATE PARK
25 Watermoor Ave,
Kilsyth South VIC 3137

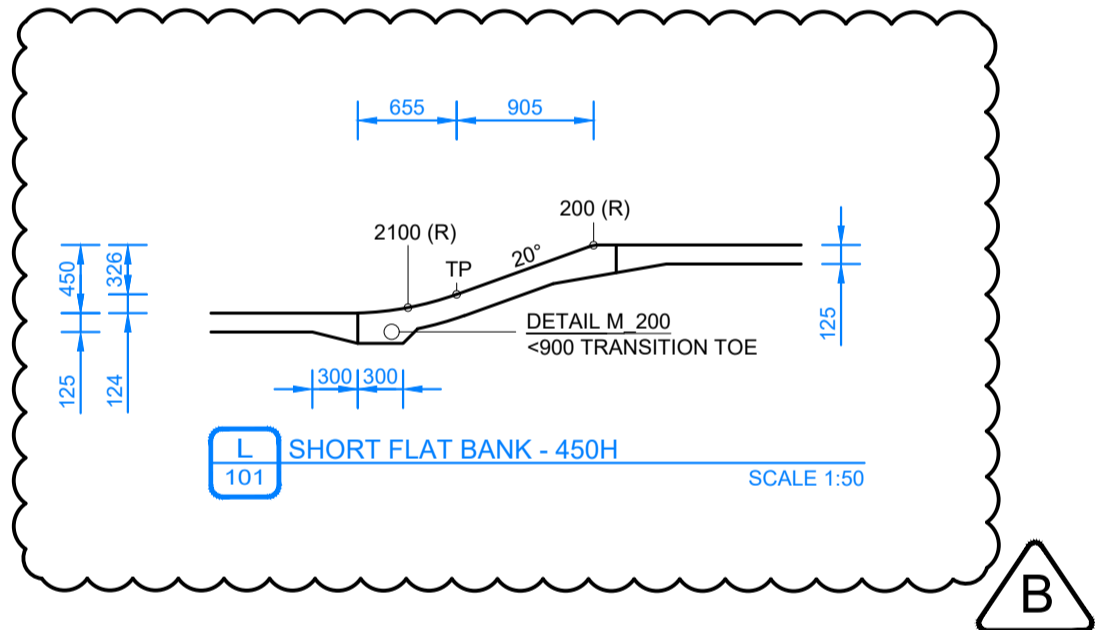
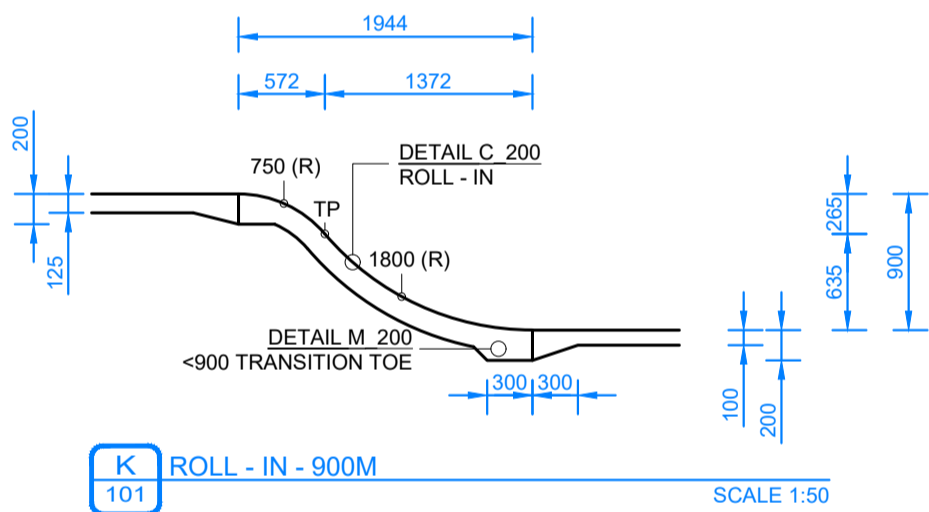
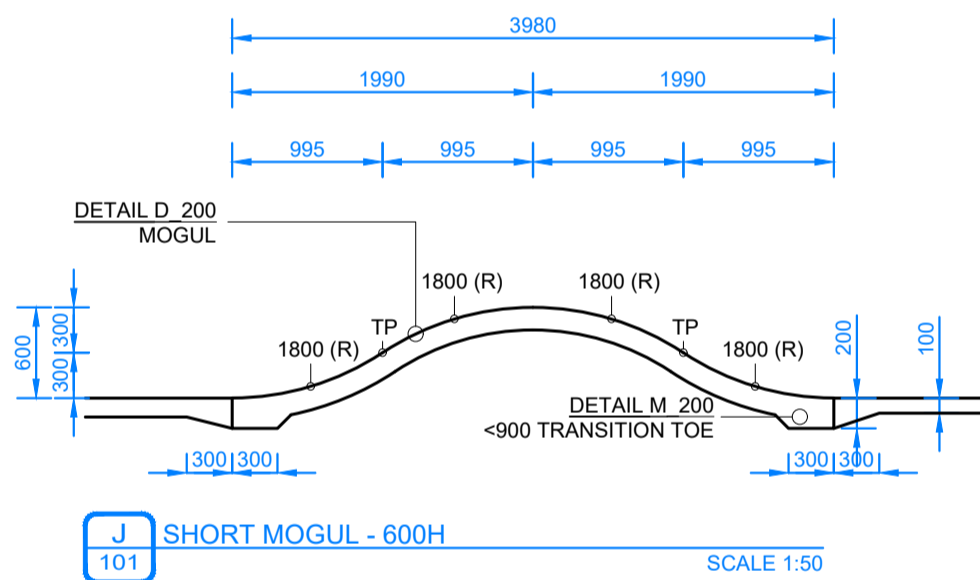
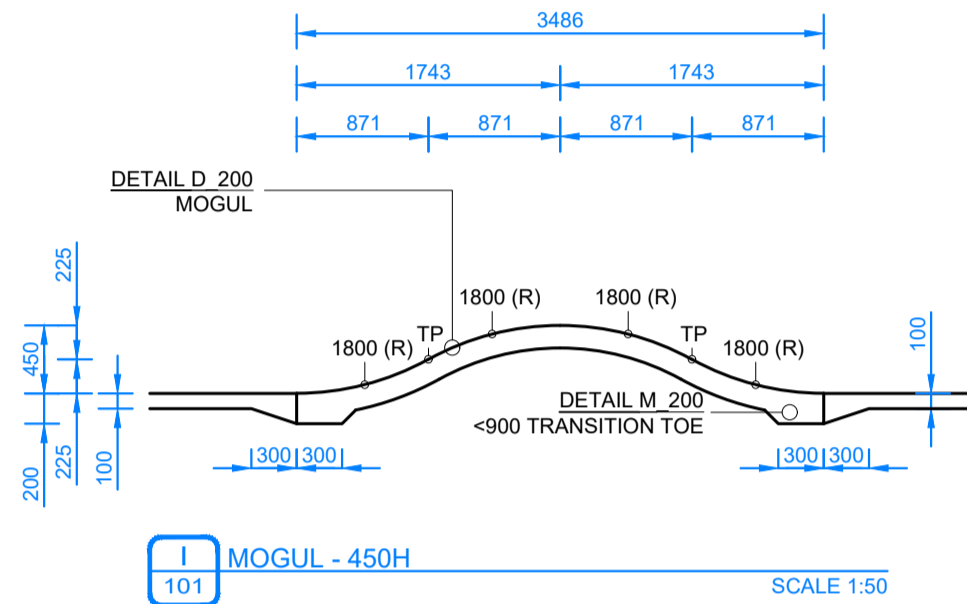
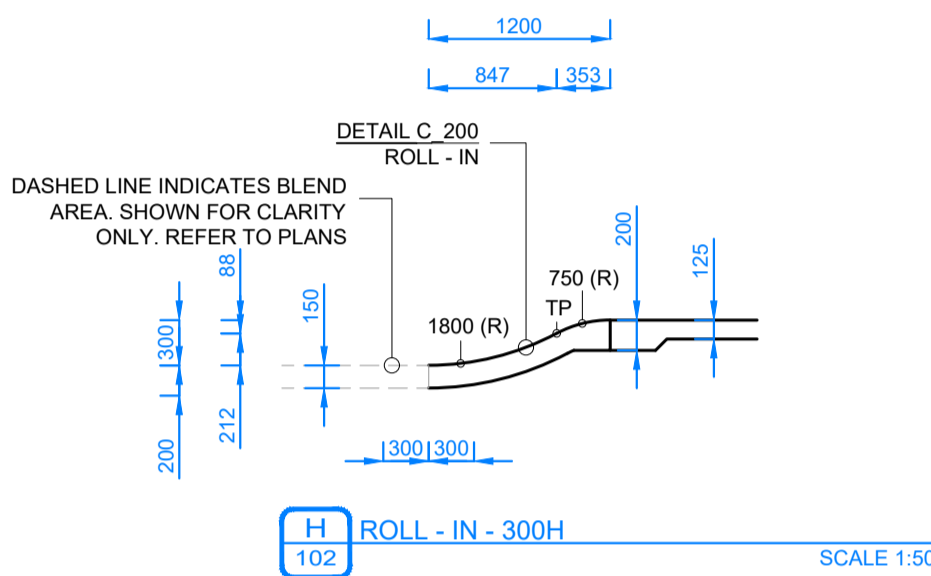
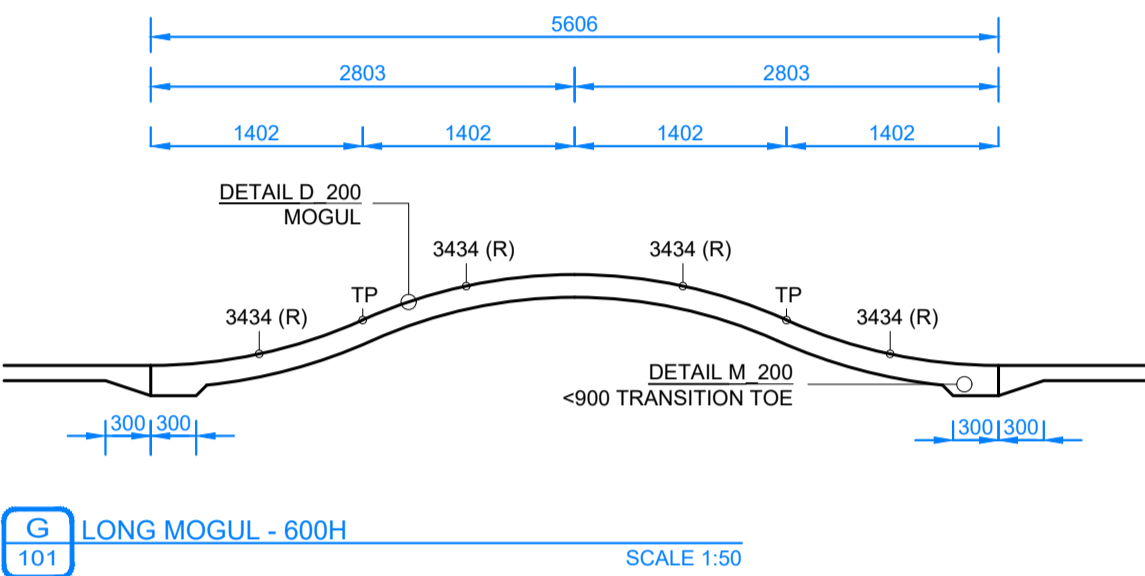
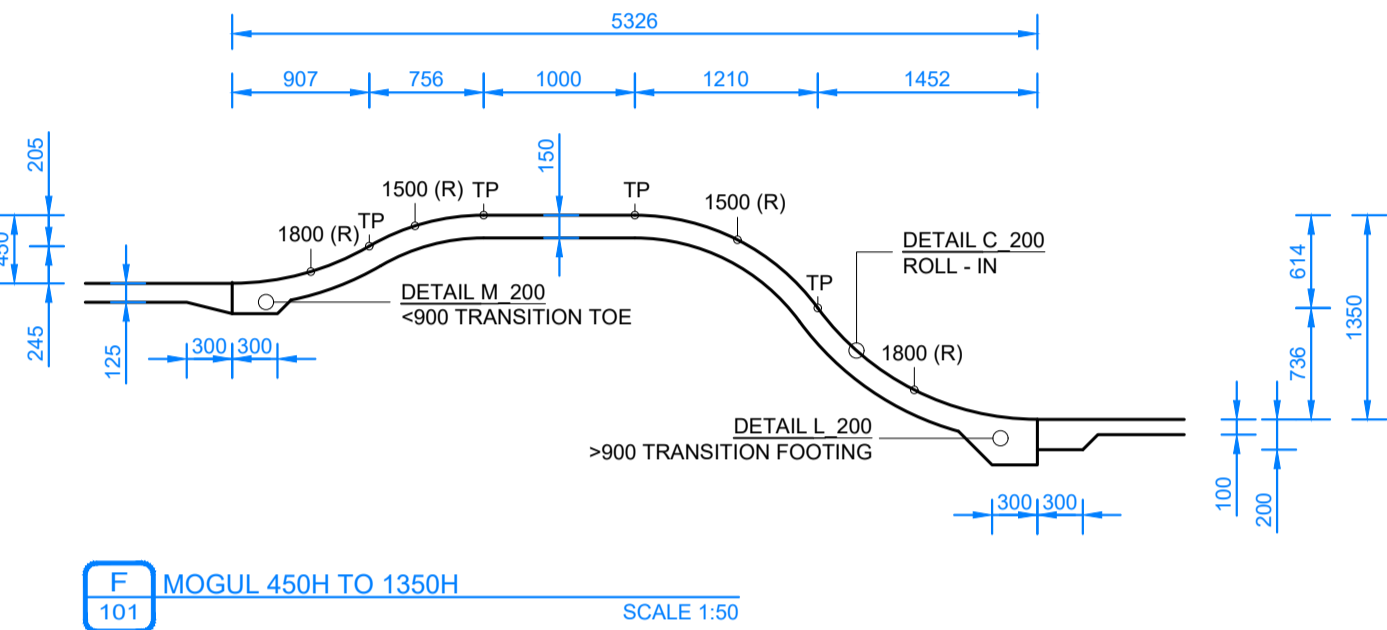
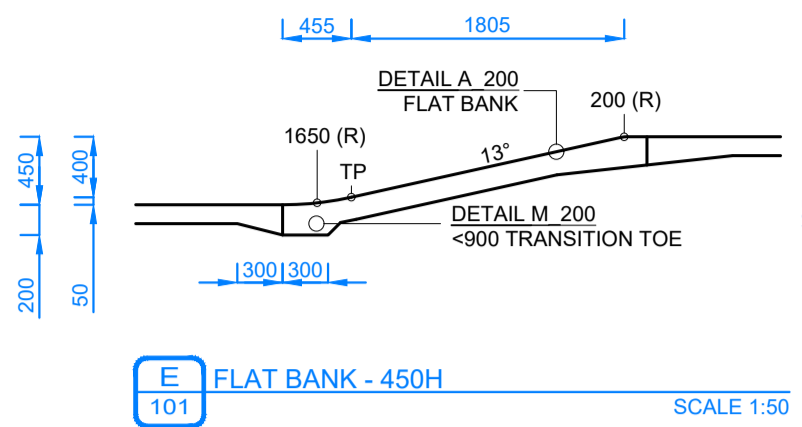
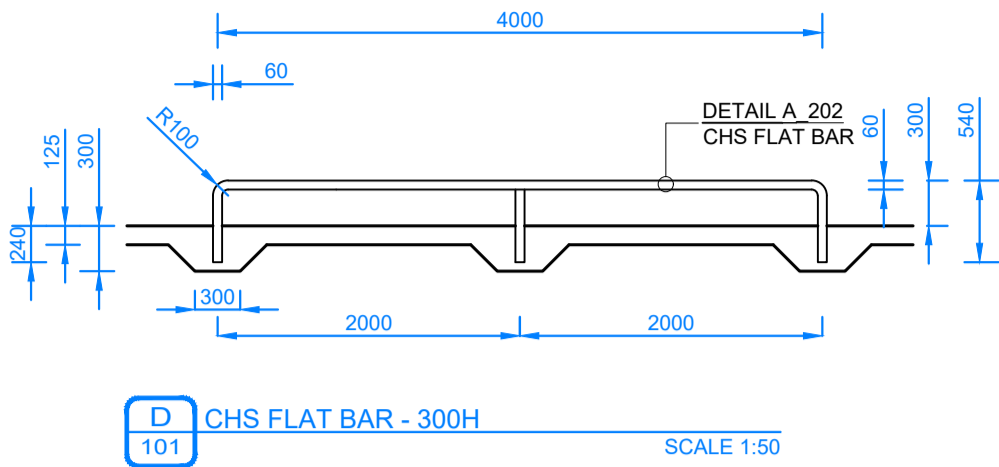
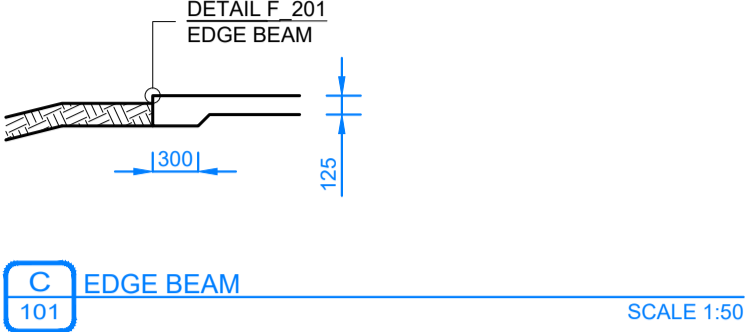
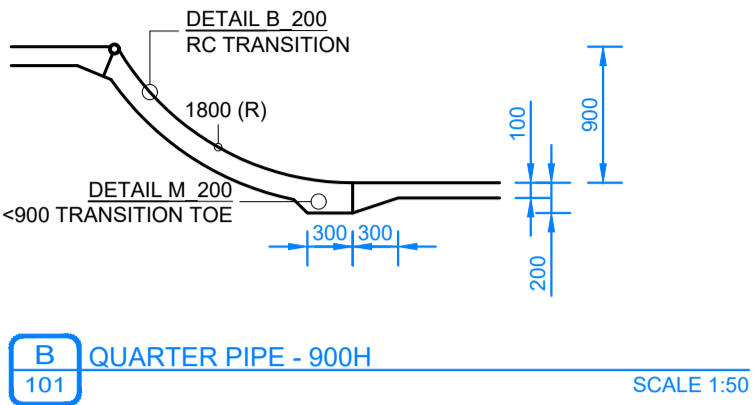
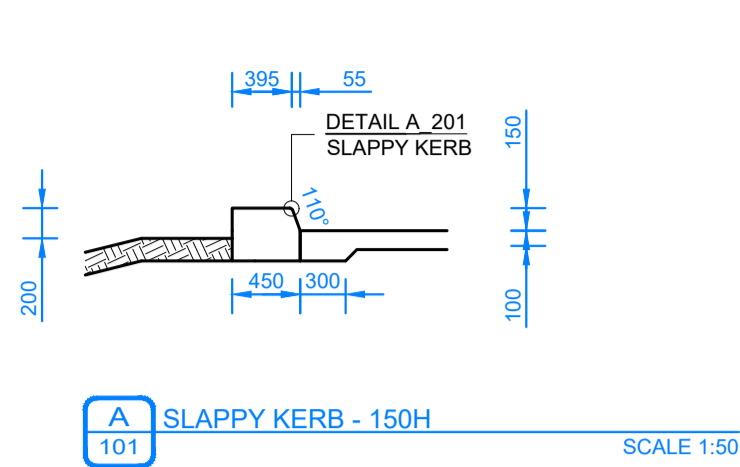
DRAWING TITLE:

Section Key Plan

SCALE: 1:100 DATE OF ISSUE: 24.07.2024
FORMAT / SIZE: A1 REFERENCE NO: 2403
DESIGN REVIEW: ND APPROVAL: JM

DRAWING NUMBER: REVISION:

2403_CD100 B



- WARNING -
CONTRACTOR TO VERIFY LOCATION; DEPTH/CLEARANCE AND ALIGNMENT OF OVERHEAD AND UNDERGROUND SERVICES. CONTRACTOR TO ACQUIRE CURRENT AND RELEVANT 'DIAL BEFORE YOU DIG' ONE CALL' SERVICES DRAWINGS AND ADHERE TO ALL REQUIREMENTS FOR WORKS NEAR SERVICES INCLUDING CLEARANCES, EASEMENTS AND INFORMING SERVICE AUTHORITIES PRIOR TO COMMENCEMENT OF WORKS. THE LOCATIONS OF UNDERGROUND SERVICES INDICATED IN THIS SET OF DRAWINGS ARE INDICATIVE ONLY. PIT LOCATIONS HAVE BEEN SURVEYED BY A LICENSED SURVEYOR.

- SITE DIMENSIONS -
CONTRACTOR TO SATISFY THEMSELVES OF SITE CONDITIONS, CHANGES IN LEVEL AND DIMENSIONS PRIOR TO FABRICATION OF SITE SPECIFIC ITEMS OR PRIOR TO ORDERING/PURCHASING MATERIALS. WHERE DISCREPANCIES EXIST BETWEEN DRAWINGS AND SITE CONDITIONS CONTRACTOR TO NOTIFY SUPERINTENDENT PRIOR TO COMMENCEMENT OF WORKS.

- COPYRIGHT AND INTELLECTUAL PROPERTY RIGHTS -
ENLOCUS RETAINS THE INTELLECTUAL PROPERTY RIGHT IN RELATION TO THE CONTRACT MATERIAL. THE DESIGN AS REPRESENTED BY THE DRAWING SET AND ALL DETAILS, INGENUITY AND INNOVATION REMAIN THE PROPERTY OF ENLOCUS. REFER TO CONTRACT FOR IRREVOCABLE LICENSE GRANTED TO THE CLIENT AND COPYRIGHT ARRANGEMENT. © ENLOCUS 2022

DRAWING STATUS:

PRE-CONSTRUCTION

NOT FOR CONSTRUCTION

REVISION STATUS:

B	100% Issue	24.07.24
A	Pre-Construction Issue For Approval	10.07.24

LANDSCAPE ARCHITECT CONSULTANT:

enlocus
ENLOCUS
Ground Floor,
151 St Georges Rd,
Fitzroy North, Victoria 3066
T : 03 9482 2202
W : www.enlocus.com

CONSULTANTS:

STRUCTURAL ENGINEER

MATRIX ENGINEERING

GROUP P/L

24/37 Kellor Park Drive

Kellor Park, Victoria 3042

Tel : +613 9331 7522

www.matrixgroup.net.au

NOTES / LEGEND:

SECTION NOTES:

1. ALL SECTIONS TO BE READ IN CONJUNCTION WITH DIMENSION PLAN, DETAILS, ENGINEERING DETAILS AND LEVELS PLANS AS APPROPRIATE. DESIGNER (ENLOCUS PTY LTD) TO BE CONTACTED WITH ANY DISCREPANCIES OR REQUIRED CLARITY FOR APPROVAL IN WRITING PRIOR TO WORKS COMMENCING/CONTINUING.
2. CLASS 1 FINISH TO ALL VERTICAL SURFACES. STEEL TROWEL FINISH TO PLATFORMS, FLAT BANKS, TRANSITIONS ETC. REFER TO SPECIFICATIONS FOR FURTHER INFORMATION.
3. CONCRETE 32MPa THROUGHOUT. LIMIT MOISTURE CONTENT. SAW CUT ALL SLABS MIN 24 - MAX 48 HRS AFTER POUR. SAW CUTS TO BE ACCURATE, STRAIGHT AND TRUE.
4. ENSURE ADEQUATE VIBRATION OF CONCRETE IS ACHIEVED. REFER TO SPECIFICATIONS FOR FURTHER INFORMATION.
5. SLUMP OF CONCRETE 90MM -100MM. REFER TO SPECIFICATIONS FOR FURTHER INFORMATION.
6. ALL HANDRAILS, RAILS & STEEL LEDGES IN SKATEPARK TO BE CHECK MEASURED ON SITE PRIOR TO FABRICATION (AFTER CAST IN PLATE INSTALLATION) ANY DISCREPANCIES OR LACK OF CLARITY SHALL BE INDICATED BY CONTRACTOR TO DESIGNER (ENLOCUS PTY LTD) FOR CLARIFICATION IN WRITING PRIOR TO WORKS COMMENCING/CONTINUING.
7. REFER TO ENGINEERING DETAILS FOR FURTHER INFORMATION.

CLIENT NAME:

MAROONDAH CITY COUNCIL
179 Maroondah Highway,
Ringwood VIC 3134

PROJECT NAME:

MAROONDAH SKATE PARK
25 Watermoor Ave,
Kilsyth South VIC 3137

DRAWING TITLE:

Sections 01

SCALE:	1:50	DATE OF ISSUE:	24.07.2024
FORMAT / SIZE:	A1	REFERENCE NO:	2403
DESIGN REVIEW:	ND	APPROVAL:	JM

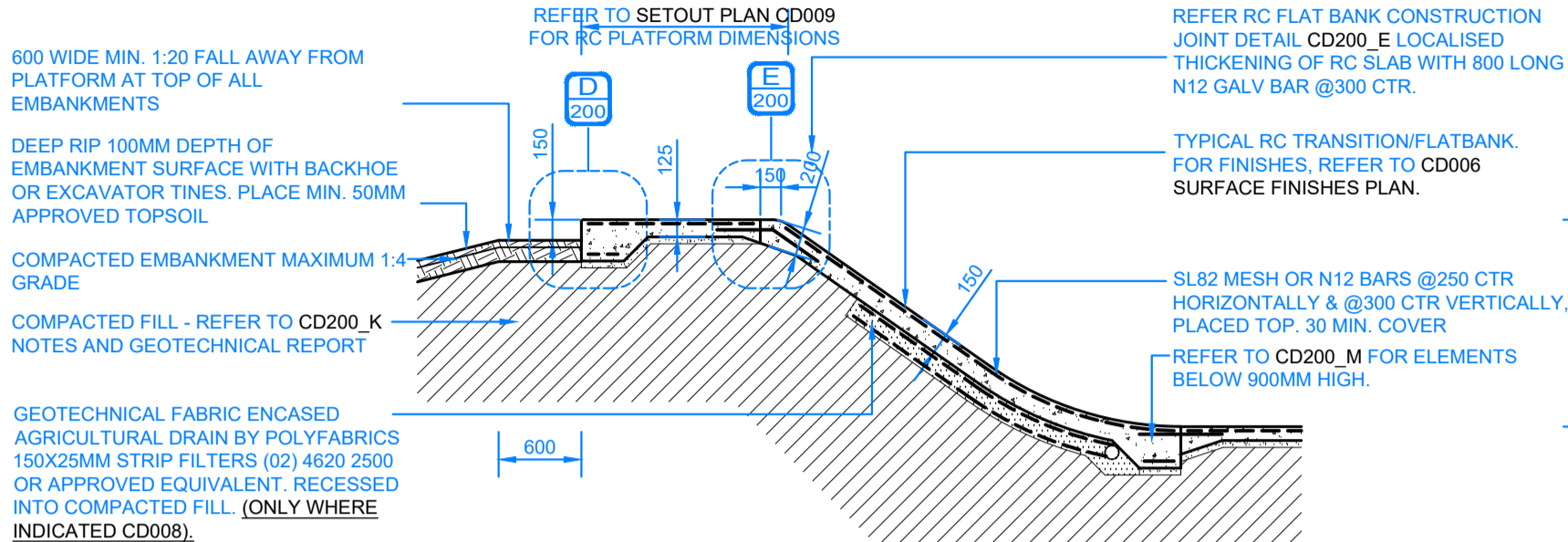
DRAWING NUMBER:

2403_CD101

REVISION:

B

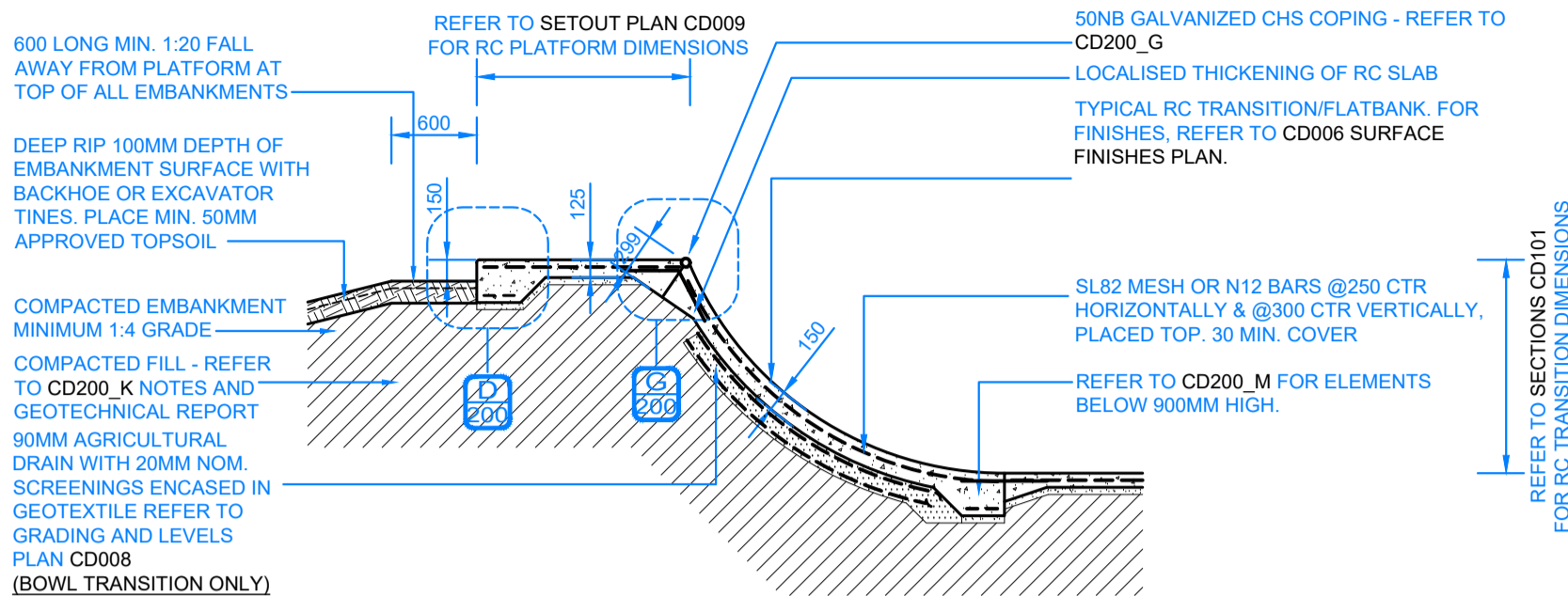
- NOTE:
1. CONTRACTOR TO APPLY AVISTA CONCRETE SEALER PRIMER & AVISTA CONCRETE SEALER GENERAL PURPOSE "MATT" FINISH x2 COATS AS PER MANUFACTURER'S SPECIFICATION OR APPROVED EQUIVALENT TO CONCRETE SURFACE. SAMPLE TEST PANEL REQUIRED. CONTRACTOR TO ADHERE TO HOLD POINT AS SPECIFIED AND TO RECEIVE WRITTEN APPROVAL OF TEST PANEL - ENGINEERING, FINISHES AND TOLERANCE - PRIOR TO PROCEEDING WITH WORKS.
 2. ANY VARIATION IN COLOUR, WORKS NOT CONSTRUCTED AS DOCUMENTED, PUDDLING, FAULTS, AND DEVIATION OF +/- 4MM OVER 2.0M FOR TRANSITION AND ADJACENT RC SLABS ETC TO BE RECTIFIED AT THE CONTRACTORS EXPENSE.
 3. ALL RC SLABS AT TOP OF FLAT BANKS AND TRANSITIONS 125MM THK. RC SLABS AT GROUND LEVEL AND FLOOR OF BOWLS/STREETCOURSE 100MM THK.
 4. N12 BARS TO BE USED AS AN ALTERNATIVE ONLY IN TRANSITIONS.
 5. HORIZONTAL SURFACES TO DRAIN AWAY FROM CHS COPING.
 6. RC FOOTING AND CONSTRUCTION JOINT APPLIES TO RADIUS AT BOTTOM OF FLAT BANKS AND TRANSITIONS. REFER TO CD200_X FOR ELEMENTS BELOW 900MM HIGH & CD200_X FOR ELEMENTS ABOVE 900MM HIGH.



A RC FLAT BANK - TYPICAL DETAIL

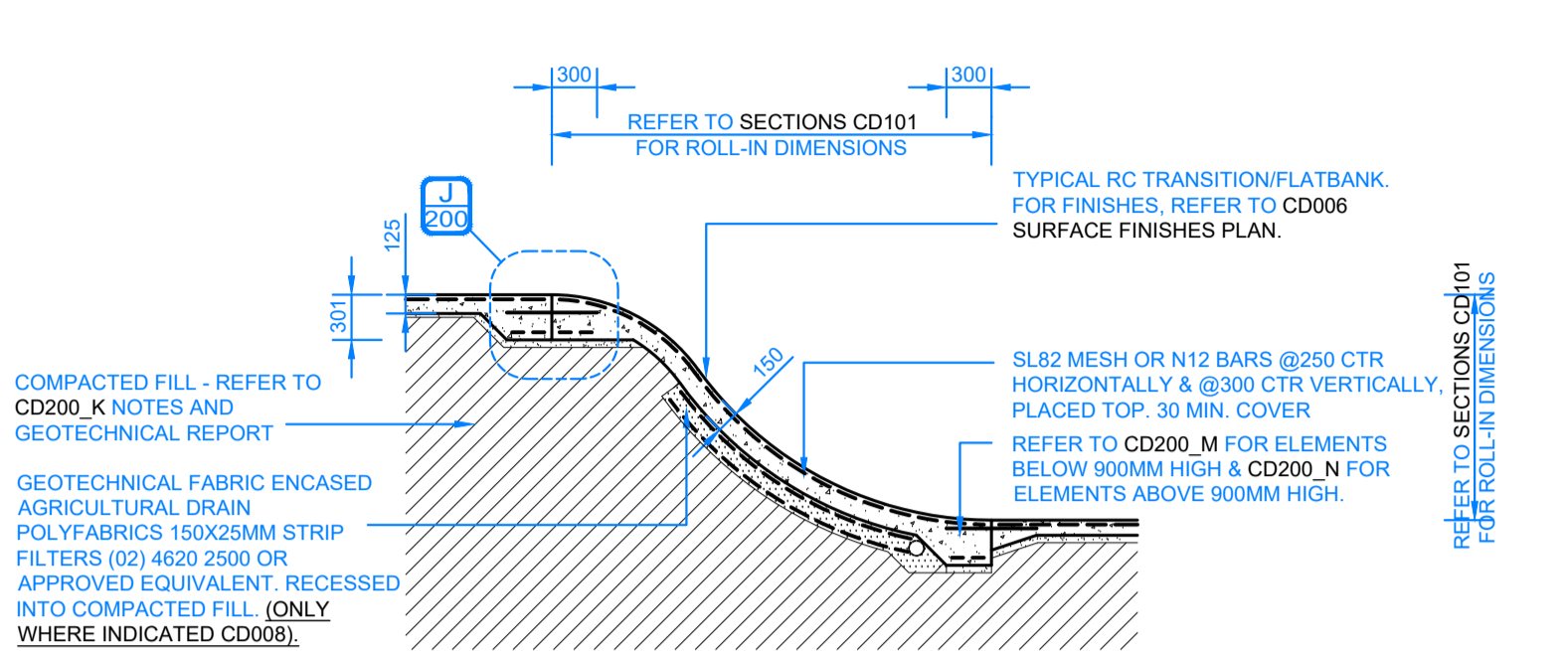
SCALE 1:50

1. CONTRACTOR TO APPLY AVISTA CONCRETE SEALER PRIMER & AVISTA CONCRETE SEALER GENERAL PURPOSE "MATT" FINISH x2 COATS AS PER MANUFACTURER'S SPECIFICATION OR APPROVED EQUIVALENT TO TEST PANEL FOR APPROVAL PRIOR TO PROCEEDING WITH WORKS
2. ANY VARIATION OR DEVIATION OF +/- 4MM OVER 2.0M FOR TRANSITION AND FLAT SURFACES WILL BE DEMOLISHED AND RECTIFIED AT THE CONTRACTORS EXPENSE
3. HORIZONTAL SURFACES TO DRAIN AWAY FROM CHS COPING



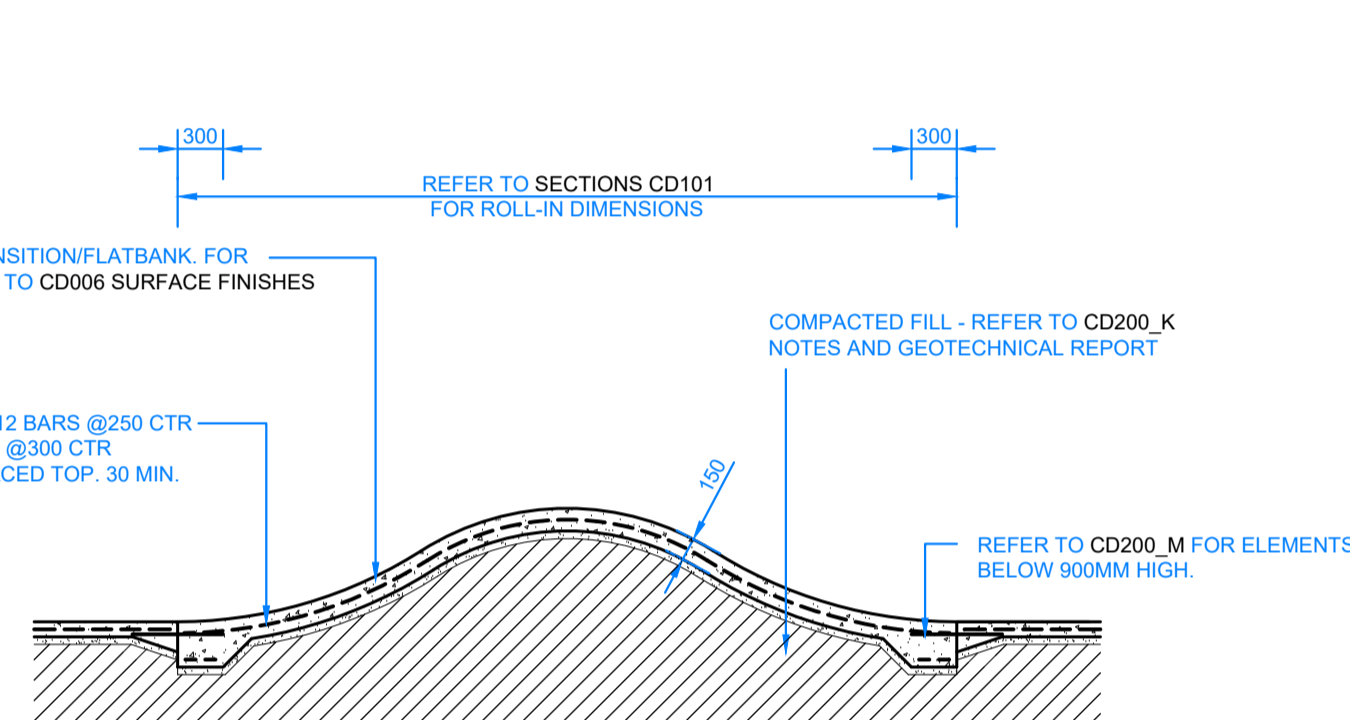
B RC TRANSITION - TYPICAL DETAIL

SCALE 1:50



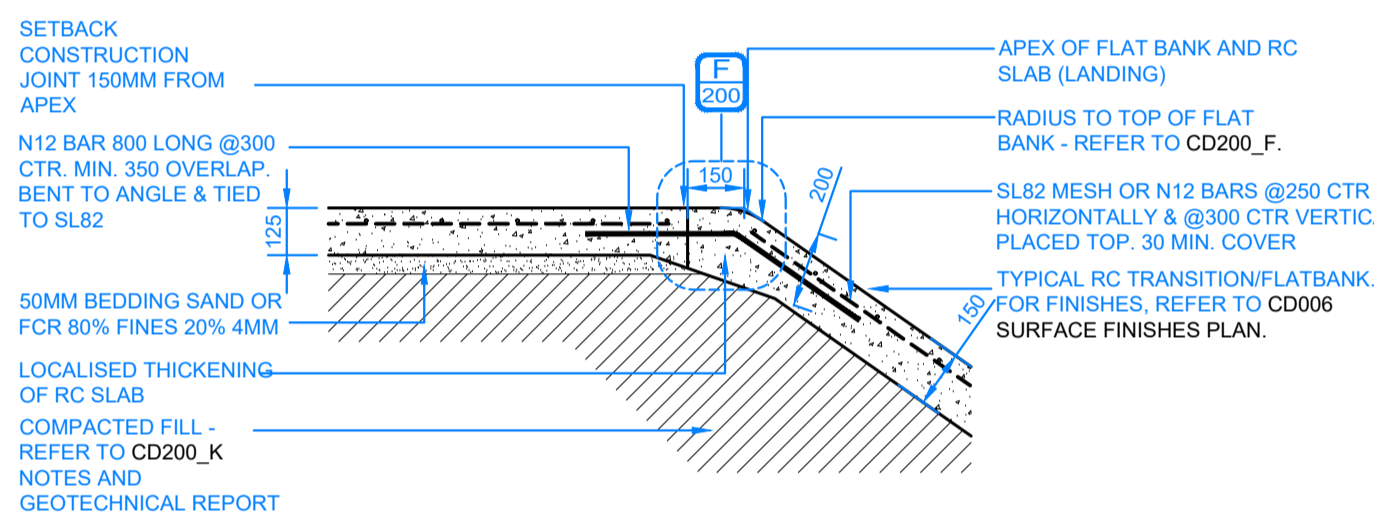
C ROLL - IN - TYPICAL DETAIL

SCALE 1:50



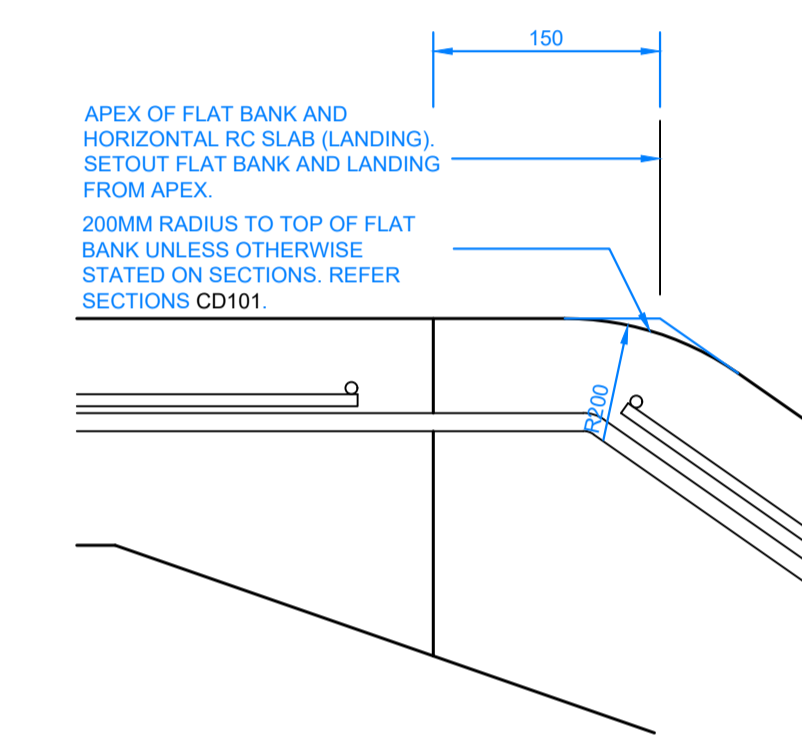
D RC MOGUL - TYPICAL DETAIL

SCALE 1:50



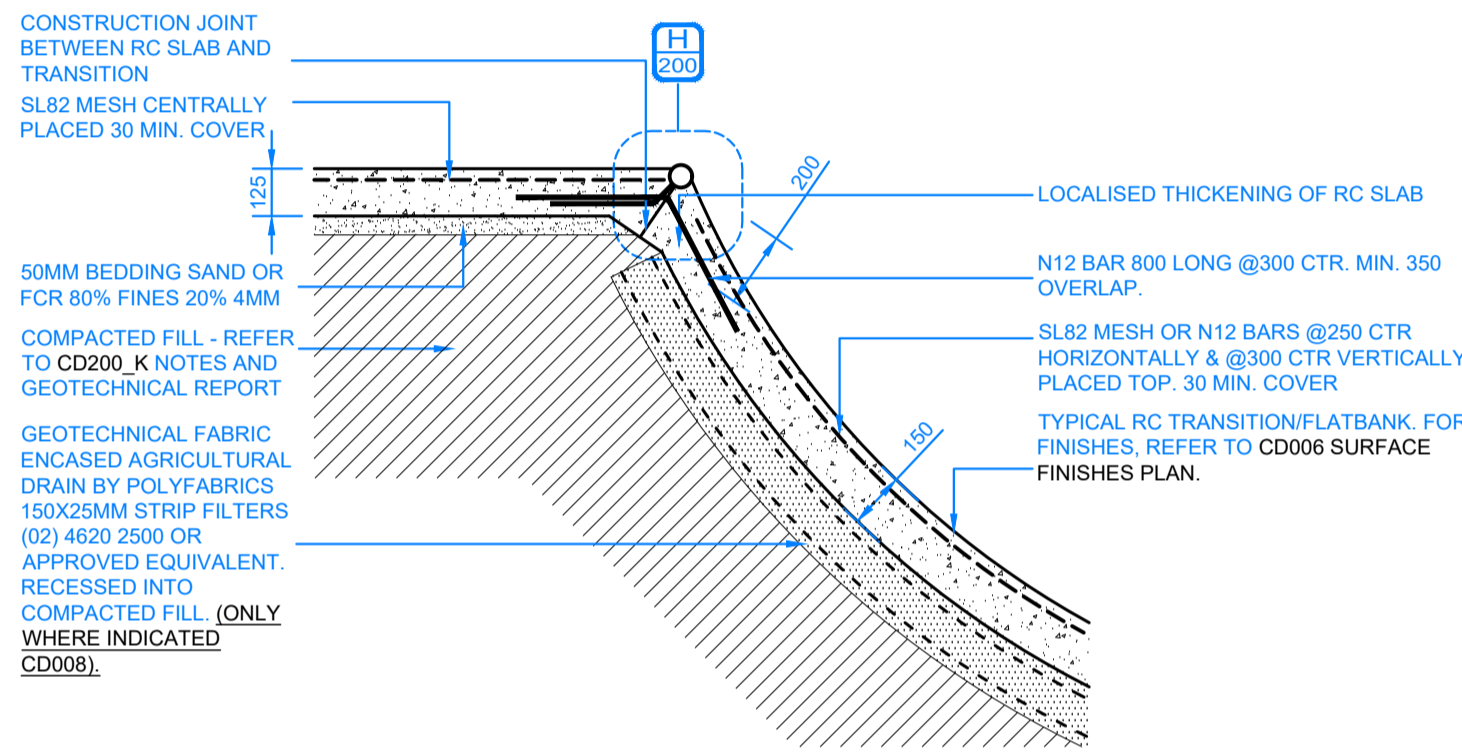
E TOP OF FLAT BANK - TYPICAL CONSTRUCTION JOINT

SCALE 1:20



F SETOUT OF FLAT BANK - DETAIL

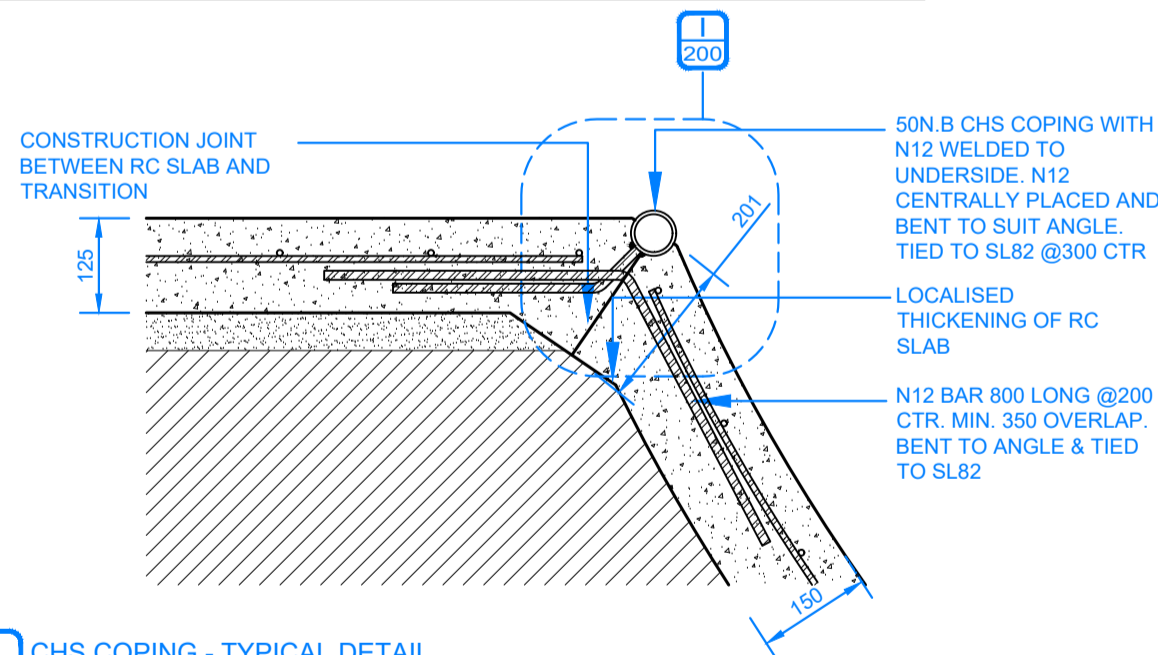
SCALE 1:5



G <1500MM HIGH TRANSITION COPING - TYPICAL DETAIL

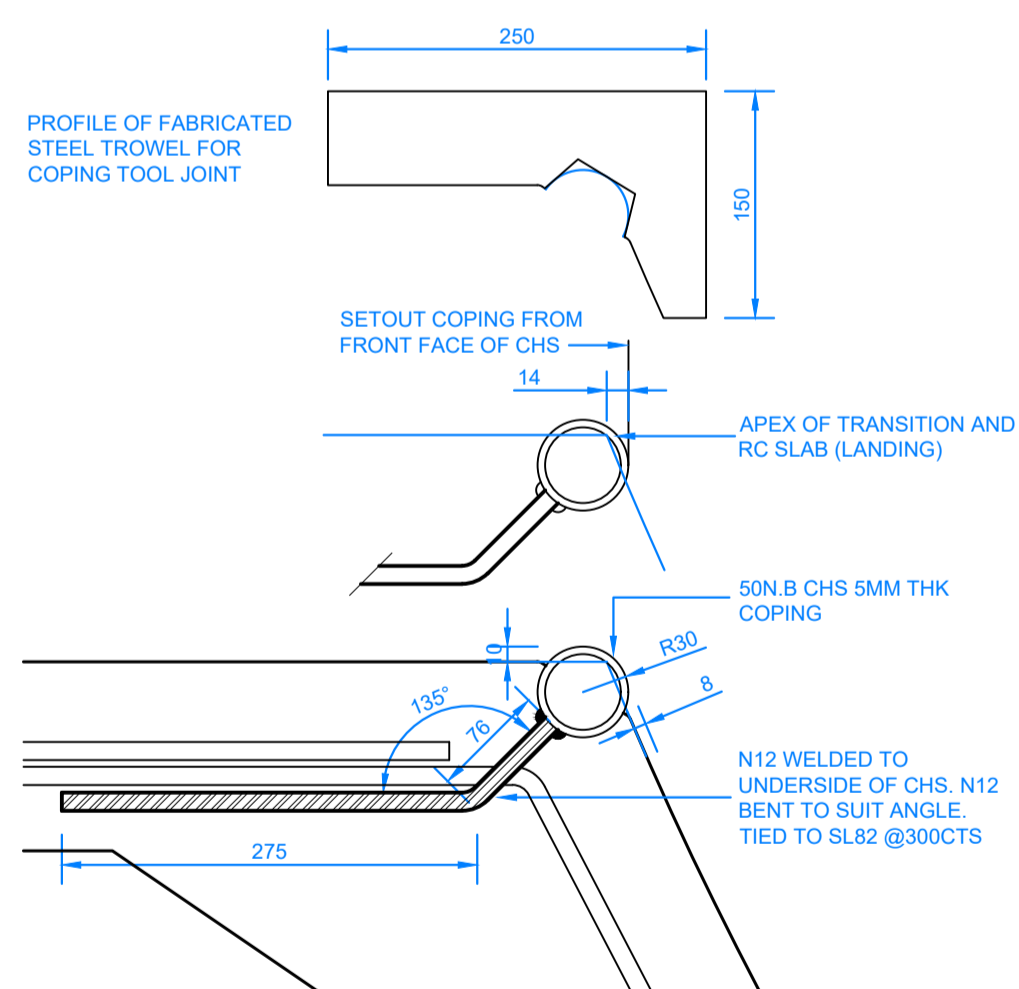
SCALE 1:20

- NOTE:
1. ALL WELDS GROUND SMOOTH
 2. ADJACENT SURFACES BETWEEN WELDED CHS SECTIONS TO BE FLUSH WITHOUT DISTORTION OR DEVIATION
 3. 3MM M/S END CAP TO ALL OUTSIDE ENDS
 4. ON-SITE WELDS FINISHED WITH GALVANISED PAINT "GALMET" OR APPROVED EQUIVALENT
 5. TOOLED JOINT WITH PURPOSE FABRICATED STEEL TROWEL ONLY. REFER TO DETAIL CD200_I
 6. ANY DEVIATION FROM COPING NOT WITHIN SPECIFIED TOLERANCES TO BE RECTIFIED AT THE CONTRACTORS EXPENSE



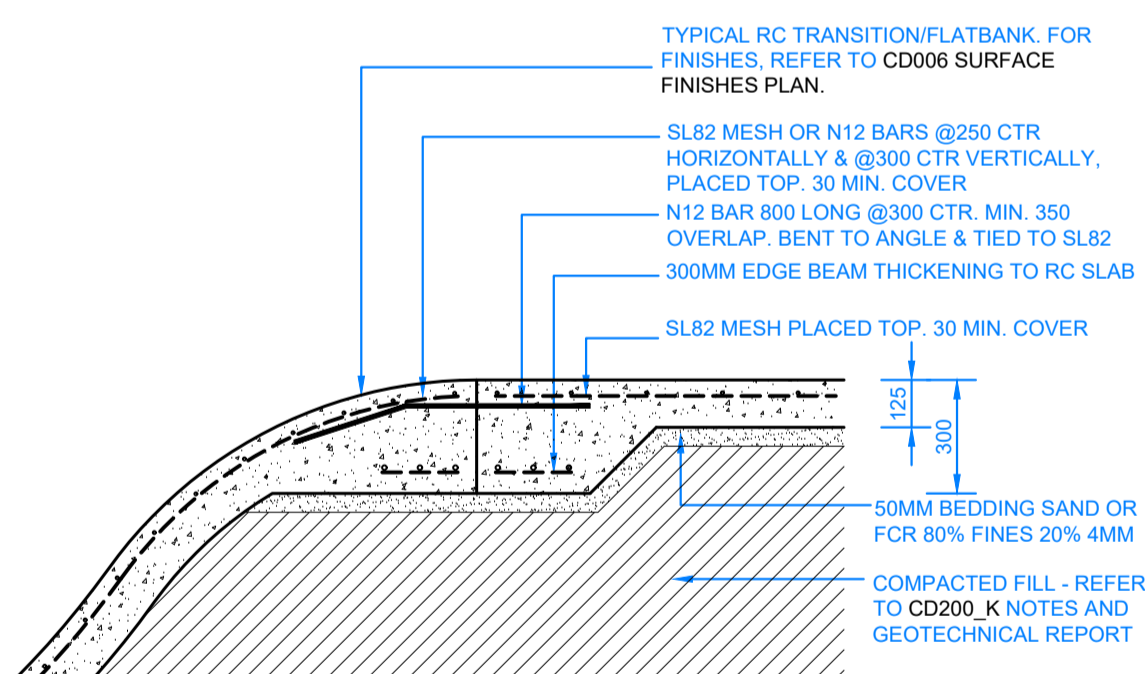
H CHS COPING - TYPICAL DETAIL

SCALE 1:10



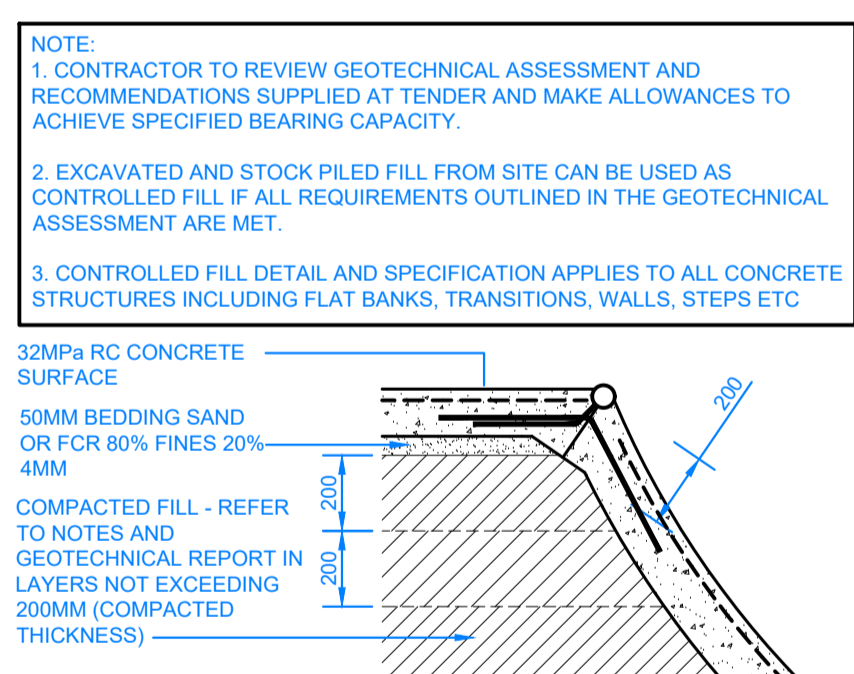
I CHS COPING SETOUT, OFFSET AND TOOL JOINT - DETAIL

SCALE 1:5



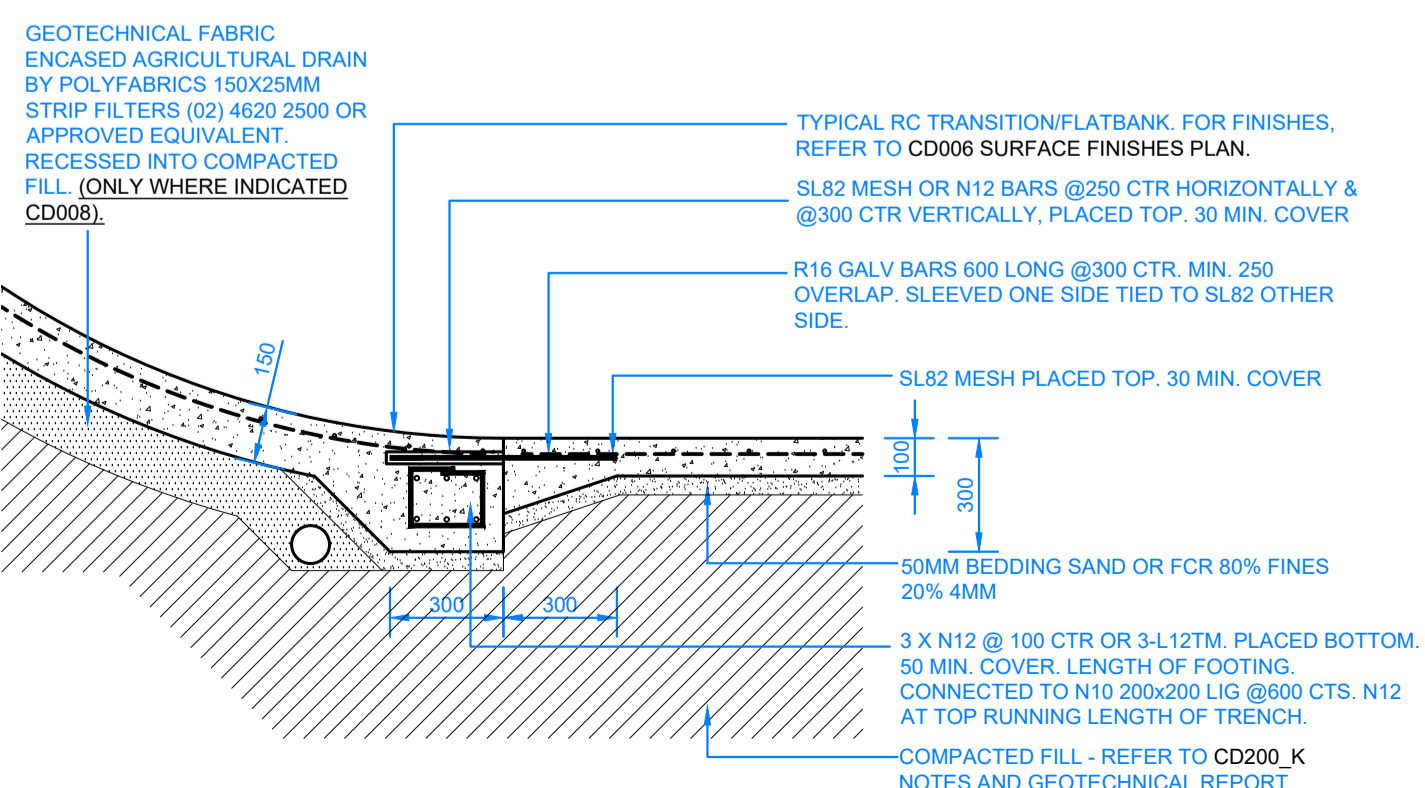
J ROLL-IN TYPICAL CONSTRUCTION JOINT

SCALE 1:20



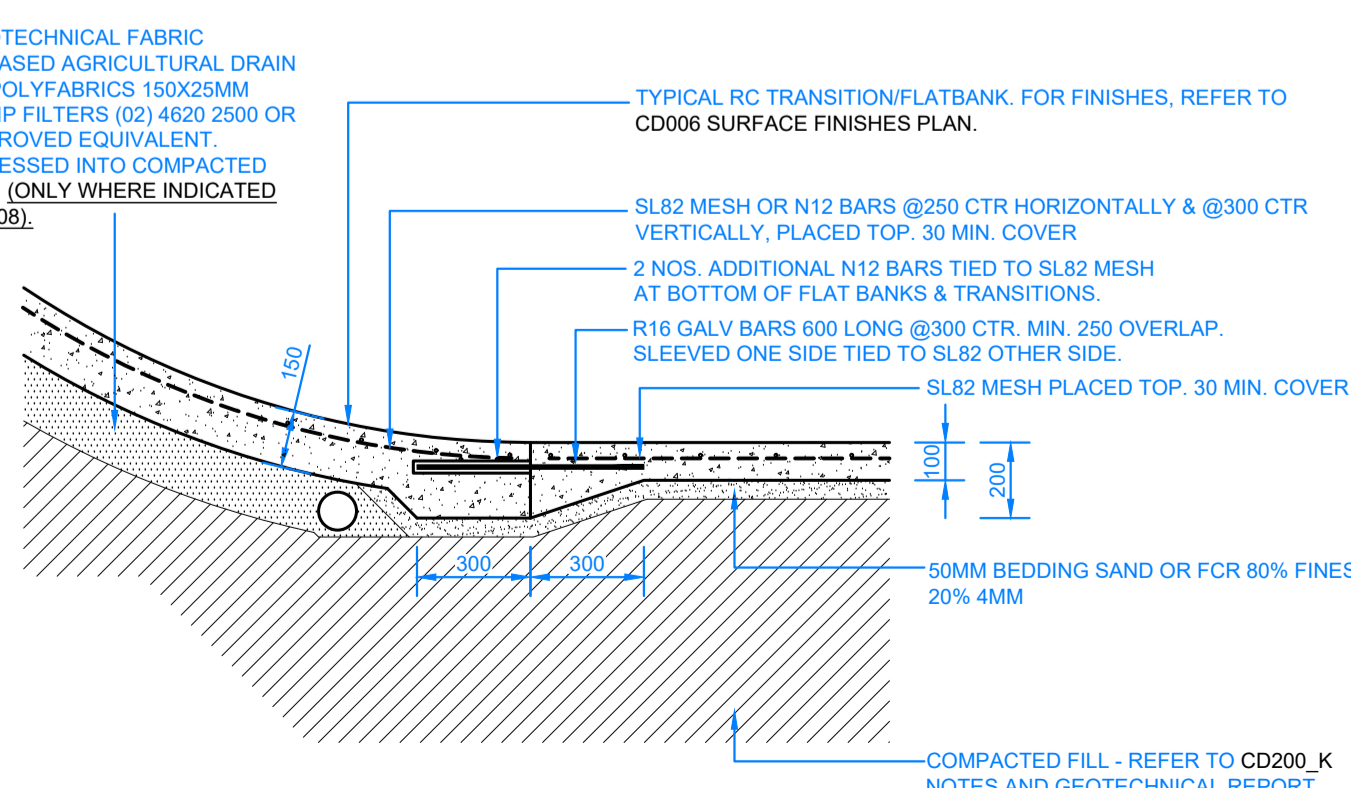
K CONTROLLED FILL - TYPICAL DETAIL

SCALE 1:20



L >900MM HIGH TRANSITION & FLAT BANK RC FOOTING

SCALE 1:20



M <900MM HIGH TRANSITION AND FLAT BANK CONSTRUCTION JOINT

SCALE 1:20

- WARNING -
CONTRACTOR TO VERIFY LOCATION, DEPTH/CLEARANCE AND ALIGNMENT OF OVERHEAD AND UNDERGROUND SERVICES. CONTRACTOR TO ACQUIRE CURRENT AND RELEVANT DIA. BEFORE YOU DIG/ONE CALL SERVICES DRAWINGS AND ADHERE TO ALL REQUIREMENTS FOR WORKS NEAR SERVICES INCLUDING CLEARANCES, EASEMENTS AND INFORMING SERVICE AUTHORITIES PRIOR TO COMMENCEMENT OF WORKS. THE LOCATIONS OF UNDERGROUND SERVICES INDICATED IN THIS SET OF DRAWINGS ARE INDICATIVE ONLY. PIT LOCATIONS HAVE BEEN SURVEYED BY A LICENSED SURVEYOR.

- SITE DIMENSIONS -
CONTRACTOR TO SATISFY THEMSELVES OF SITE CONDITIONS, CHANGES IN LEVEL AND DIMENSIONS PRIOR TO FABRICATION OF SITE SPECIFIC ITEMS OR PRIOR TO ORDERING/PURCHASING MATERIALS. WHERE DISCREPANCIES EXIST BETWEEN DRAWINGS AND SITE CONDITIONS CONTRACTOR TO NOTIFY SUPERINTENDENT PRIOR TO COMMENCEMENT OF WORKS.

- COPYRIGHT AND INTELLECTUAL PROPERTY RIGHTS -
ENLOCUS RETAINS THE INTELLECTUAL PROPERTY RIGHT IN RELATION TO THE CONTRACT MATERIAL. THE DESIGN AS REPRESENTED BY THE DRAWING SET AND ALL DETAILS, INGENUITY AND INNOVATION REMAIN THE PROPERTY OF ENLOCUS. REFER TO CONTRACT FOR IRREVOCABLE LICENSE GRANTED TO THE CLIENT AND COPYRIGHT ARRANGEMENT. © ENLOCUS 2022

DRAWING STATUS:

PRE-
CONSTRUCTION
NOT FOR CONSTRUCTION

REVISION STATUS:

B 100% Issue 24.07.24
A Pre-Construction Issue For Approval 10.07.24

LANDSCAPE ARCHITECT CONSULTANT:

ENLOCUS
Ground Floor,
151 St Georges Rd,
Fitzroy North, Victoria 3066
T : 03 9462 2202
W : www.enlocus.com

CONSULTANTS:

STRUCTURAL ENGINEER
MATRIX ENGINEERING
GROUP P/L
24/37 Kellor Park Drive
Kellor Park, Victoria 3042
Tel : +613 9331 7522
www.matrigroup.net.au

NOTES / LEGEND:

ENGINEERING NOTES:

- CONCRETE:
1. CONCRETE STRENGTH N32 MPA.
 2. CONCRETE THICKNESS 150MM SLOPES, 100MM PLATFORMS AND FLAT BOTTOM, LND.
 3. CONSTRUCTION JOINTS SHALL BE AT CONSTRUCTED MAXIMUM 6.0M OR AS PER DETAIL.
 4. SAW CUTS TO BE SAWN AS SHOWN ON PLANS. SAW CUT DEPTH TO BE 30MM DEEP. CHECK REINFORCEMENT DETAIL CD200_P FOR SAW CUT JOINT DETAILS.
 5. FOR CURING, COVER FOR SEVEN DAYS WITH PLASTIC, OR BY LIQUID MEMBRANE, TO THE APPROPRIATE AUSTRALIAN STANDARD. APPLY WITHIN 1 HOUR OF CONCRETE FINISHING.
 6. FINISH TO BE CLASS 1 METAL TROWEL TO ALL VERTICAL SURFACES. STEEL TROWEL FINISH TO PLATFORMS, FLAT BANKS, TRANSITIONS, ETC.
 7. REFER TO A.S.3600 - CONCRETE STRUCTURES AND A.S.2870:2011 - RESIDENTIAL SLABS AND FOOTINGS.
- REINFORCEMENT:
1. AS SHOWN.
 2. TRIMMERS - 2 OF N12x2000 LONG TO ALL INTERNAL CORNERS.
 3. BASE SLAB - SL82 MESH OR N12 @ 250 CRS EW.
 4. VERTICAL WALLS - REFER TO RC WALL - REINFORCEMENT DETAILS ON CD200_I.
 5. BLOCKS - AS SHOWN.
 6. GRIND RAILS - SHALL BE 75X75X6MM DURAGAL RHS (UNLESS OTHERWISE STATED ON PLANS). ENDS MITRED AND ALL WELDS GRIND SMOOTH AND COLD GALVANISED. ALL COLD GALVANISED AREAS TO HAVE "GALMET" DURAGAL SILVER PAINT APPLIED. APPLICATION TO BE NEAT AND CONSISTENT.
- EARTHWORKS:
1. STABLE CLEAN FILL COMPACTED TO 98 % (MMD0) PLACED AND COMPACTED IN 200MM LAYERS.
 2. REFER TO SOIL REPORT FOR FURTHER DETAILS.
 3. ALL SUBGROUND PREPARATION WORKS UNDER ALL CONCRETE PAVEMENTS AREAS AND LOW PROFILE RETAINING WALLS ARE TO BE PROTECTED. ROLLED AND COMPACTED AS PER RECOMMENDATIONS SET OUT IN THE GEOTECHNICAL REPORT SUPPLIED BY CIVIL TEST (REPORT NO. 1141168 DATED JANUARY 2015).
 4. ALL SOFT SPOTS TO BE EXCAVATED DOWN TO APPROPRIATE DEPTH AND REPLACED WITH COMPACTED FILL TO 98% MMD0 IN 200MM LAYERS.
 5. FURTHER GEOTECHNICAL ADVICE MAY BE REQUIRED.

CLIENT NAME:

MAROONDAH CITY COUNCIL
179 Maroondah Highway,
Ringwood VIC 3134

PROJECT NAME:

MAROONDAH SKATE PARK
25 Watermoor Ave,
Kilsyth South VIC 3137

DRAWING TITLE:

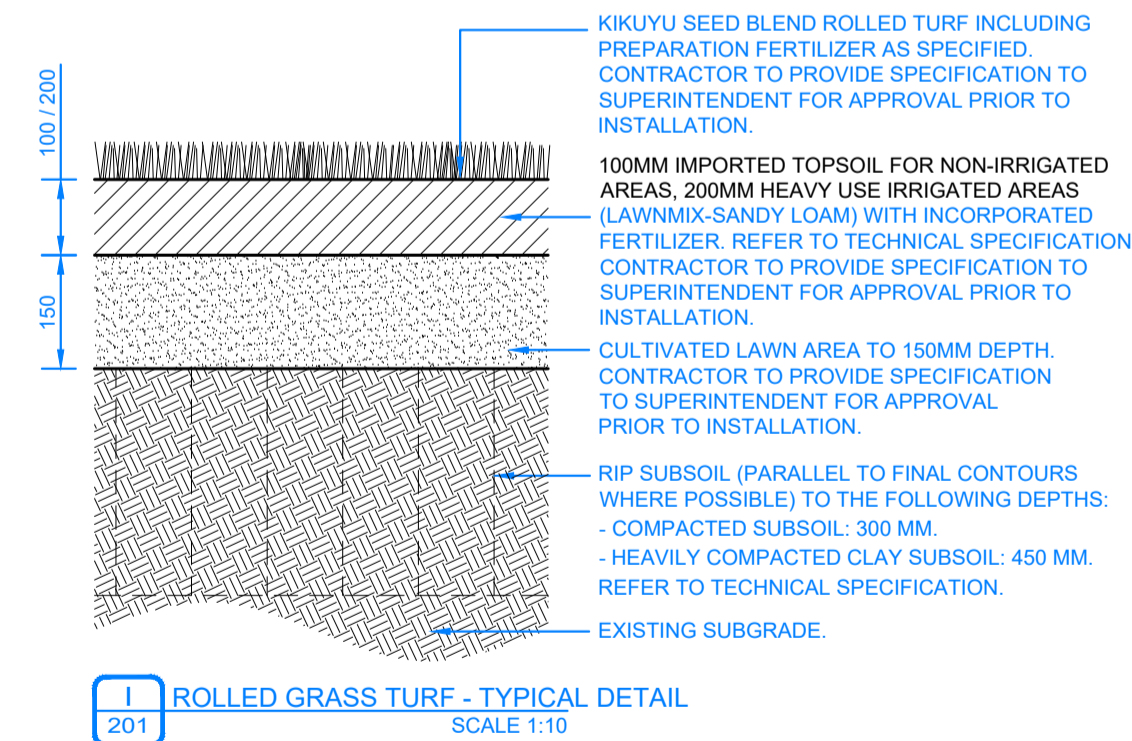
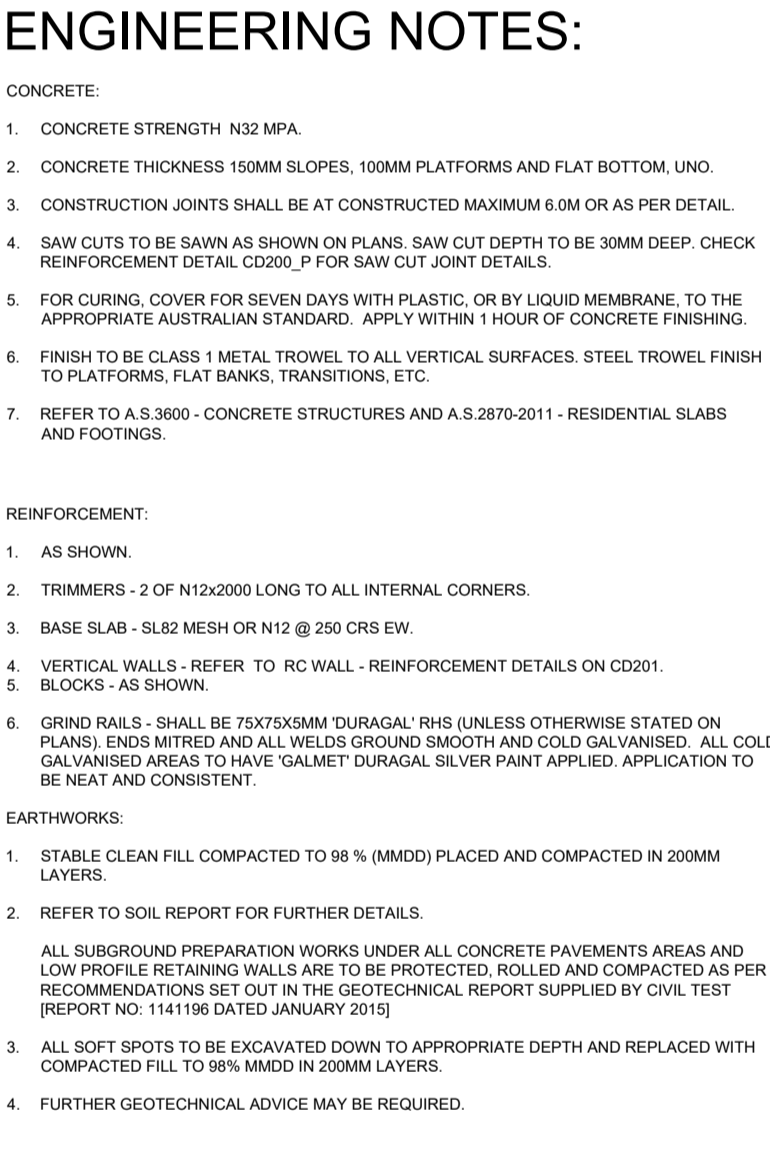
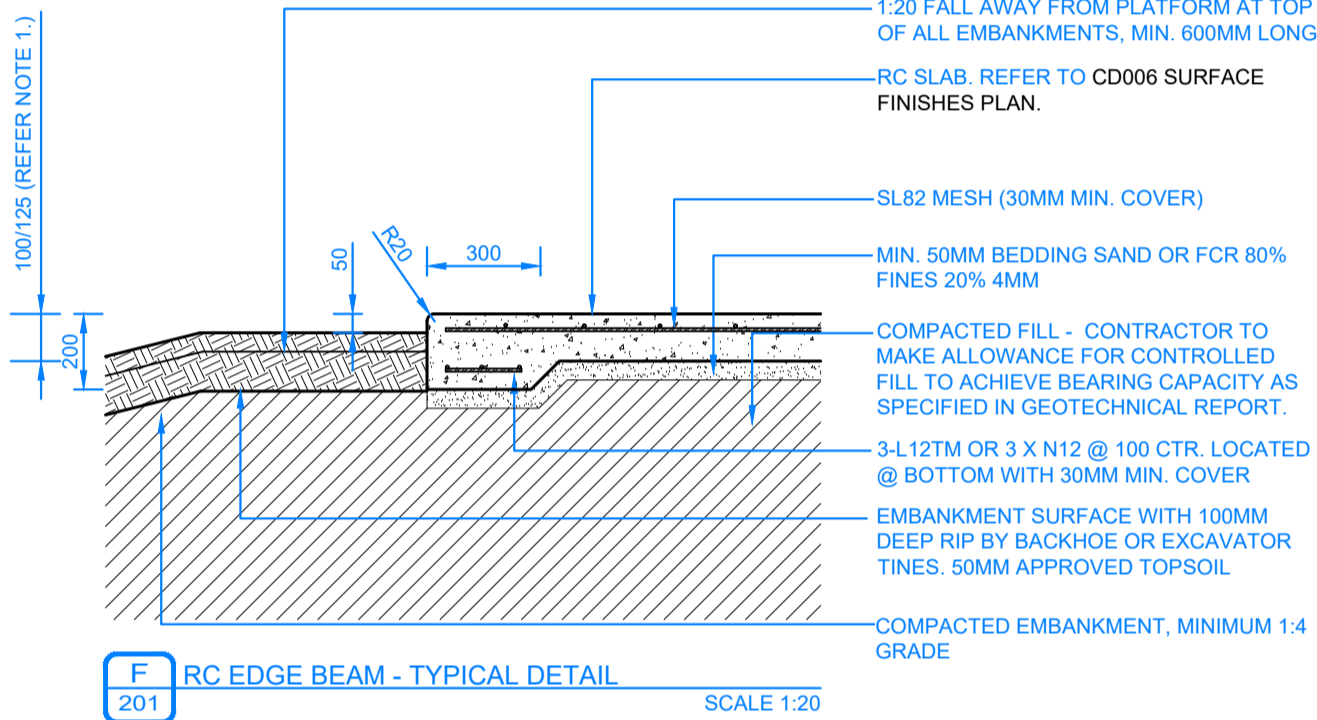
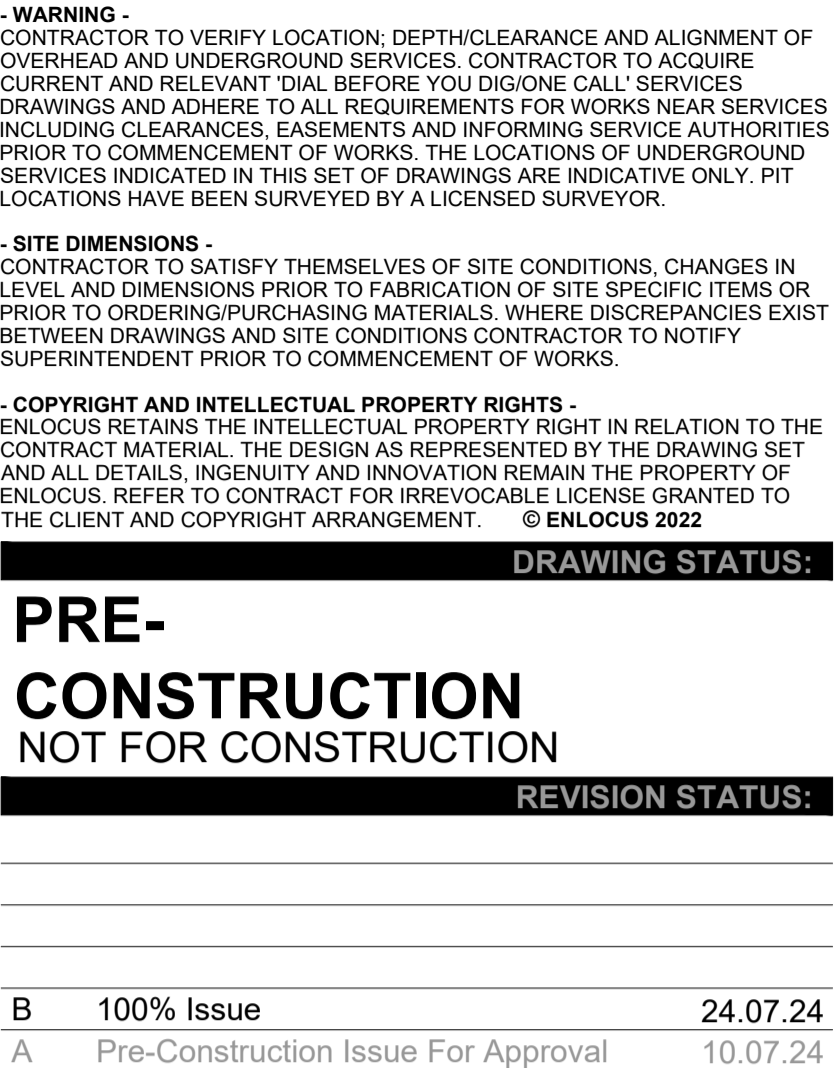
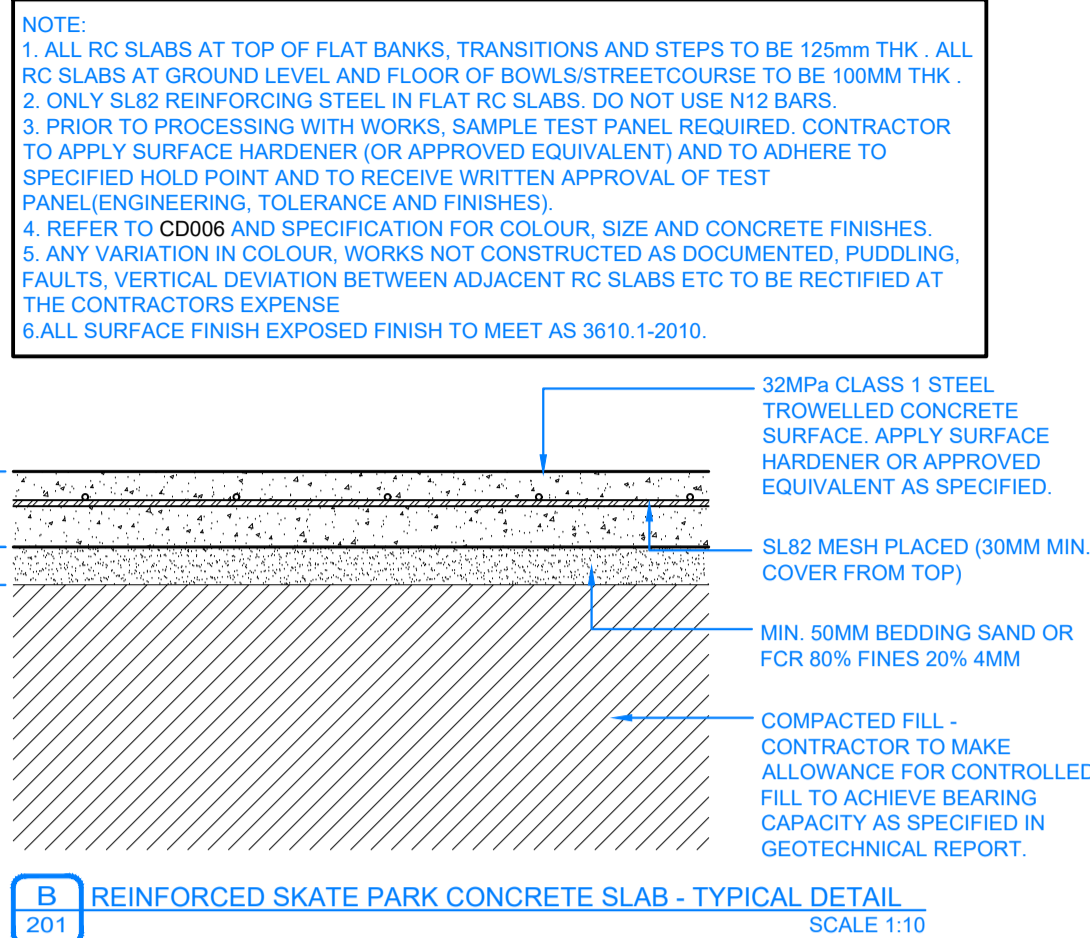
Engineering Details 01

SCALE: N/A DATE OF ISSUE: 24.07.2024
FORMAT / SIZE: A1 REFERENCE NO: 2403
DESIGN REVIEW: ND APPROVAL: JM

DRAWING NUMBER: REVISION:

2403_CD 200

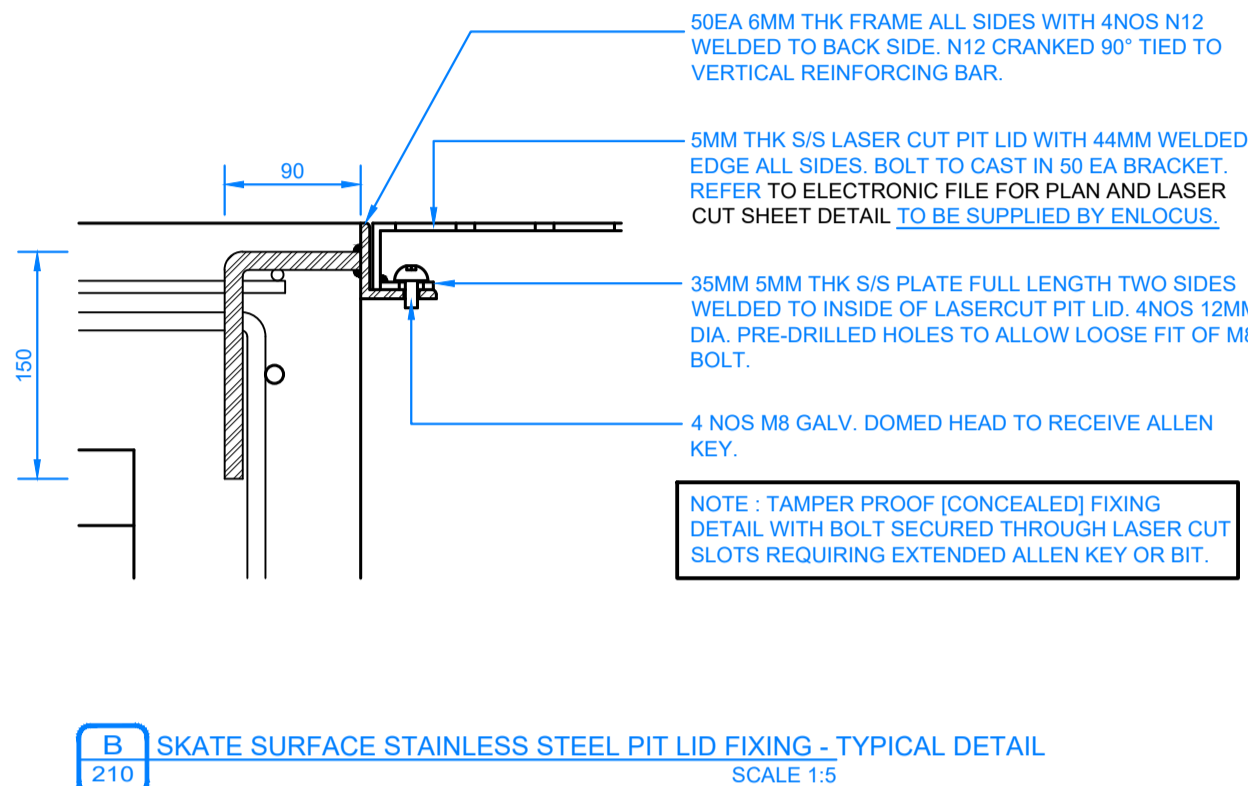
B





SCALE 1:10

2403 CD 202 B



NOTES / LEGEND:

CONCRETE:

- 1. CONCRETE STRENGTH: N32 MPA.
- 2. CONCRETE THICKNESS 150MM SLOPES, 100MM PLATFORMS AND FLAT BOTTOM, UNO.
- 3. CONSTRUCTION JOINTS SHALL BE TO EXCEED MAXIMUM 60M OR AS PER DETAIL.
- 4. SAW CUTS TO BE SAWN AS SHOWN ON PLANS. SAW CUT DEPTH TO BE 30MM DEEP. CHECK REINFORCEMENT DETAIL, C0200. P FOR CONCRETE JOINT DETAILS.
- 5. FOR CURING, COVER FOR SEVEN DAYS WITH PLASTIC OR BY LIQUID MEMBRANE, TO THE APPROPRIATE AUSTRALIAN STANDARD. APPLY WITHIN 1 HOUR OF CONCRETE FINISHING.
- 6. FINISH TO BE CLASS 1 METAL TROWEL, TO ALL VERTICAL SURFACES. STEEL TROWEL FINISH TO PLATFORMS, FLAT BANKS, TRANSITIONS, ETC.
- 7. REFER TO A.S.3600 - CONCRETE STRUCTURES AND A.S.2870-2011 - RESIDENTIAL SLABS AND FOOTINGS.

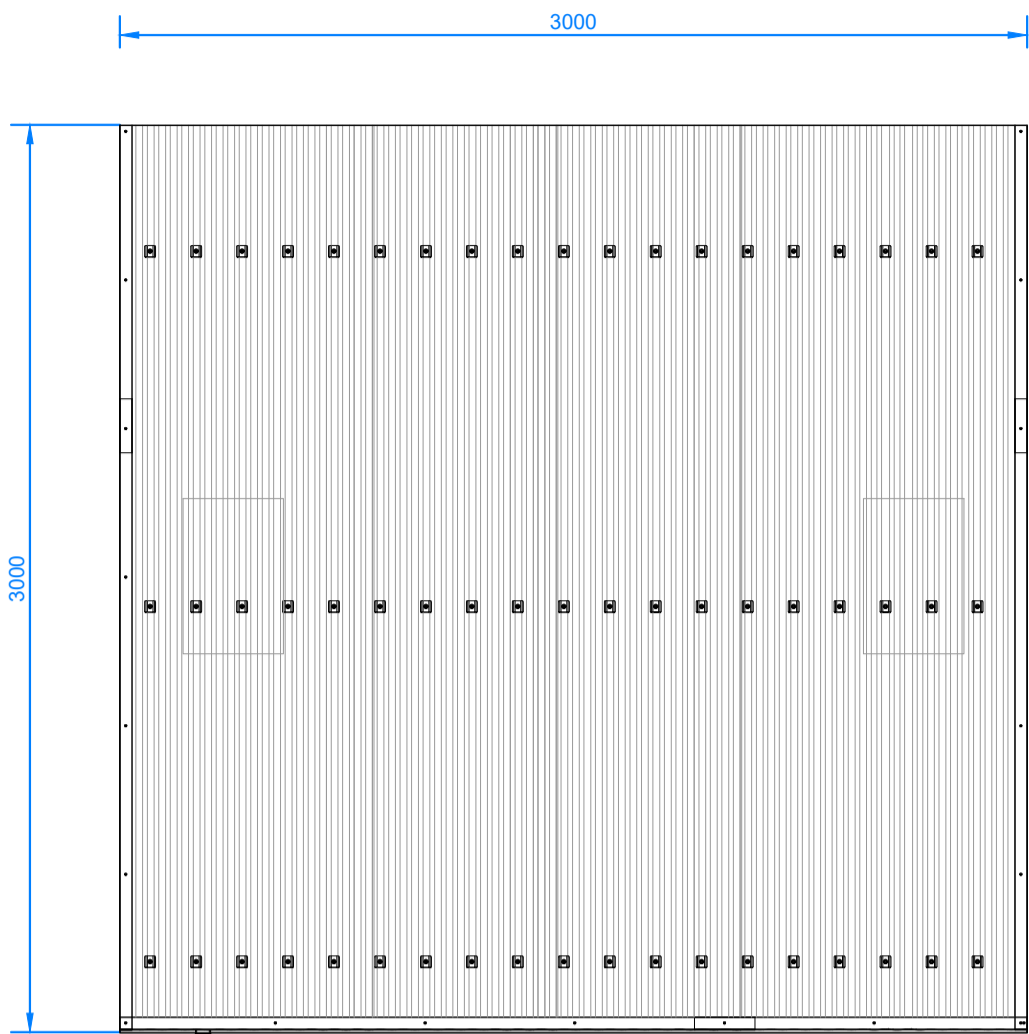
REINFORCEMENT:

- 1. AS SHOWN.
- 2. TRIMMERS - 2 OF N12x2000 LONG TO ALL INTERNAL CORNERS.
- 3. BASE SLAB - 14/2 MESH OR N12 @ 200 CRS EW.
- 4. VERTICAL WALLS - REFER TO RC WALL - REINFORCEMENT DETAILS ON C0201.
- 5. BLOCKS: AS SHOWN.
- 6. GRID RAILS - SHALL BE 75X75X3MM "DURALUM" /RIS (UNLESS OTHERWISE STATED) ON PLANS) ENDS MITRED AND ALL WELDS GRID SMOOTH AND COLD GALVANISED. ALL GALV COATED TO HAVE SALTMET DURALUM SILVER PANT APPLIED. APPLICATION TO BE NEAT AND CONSISTENT.

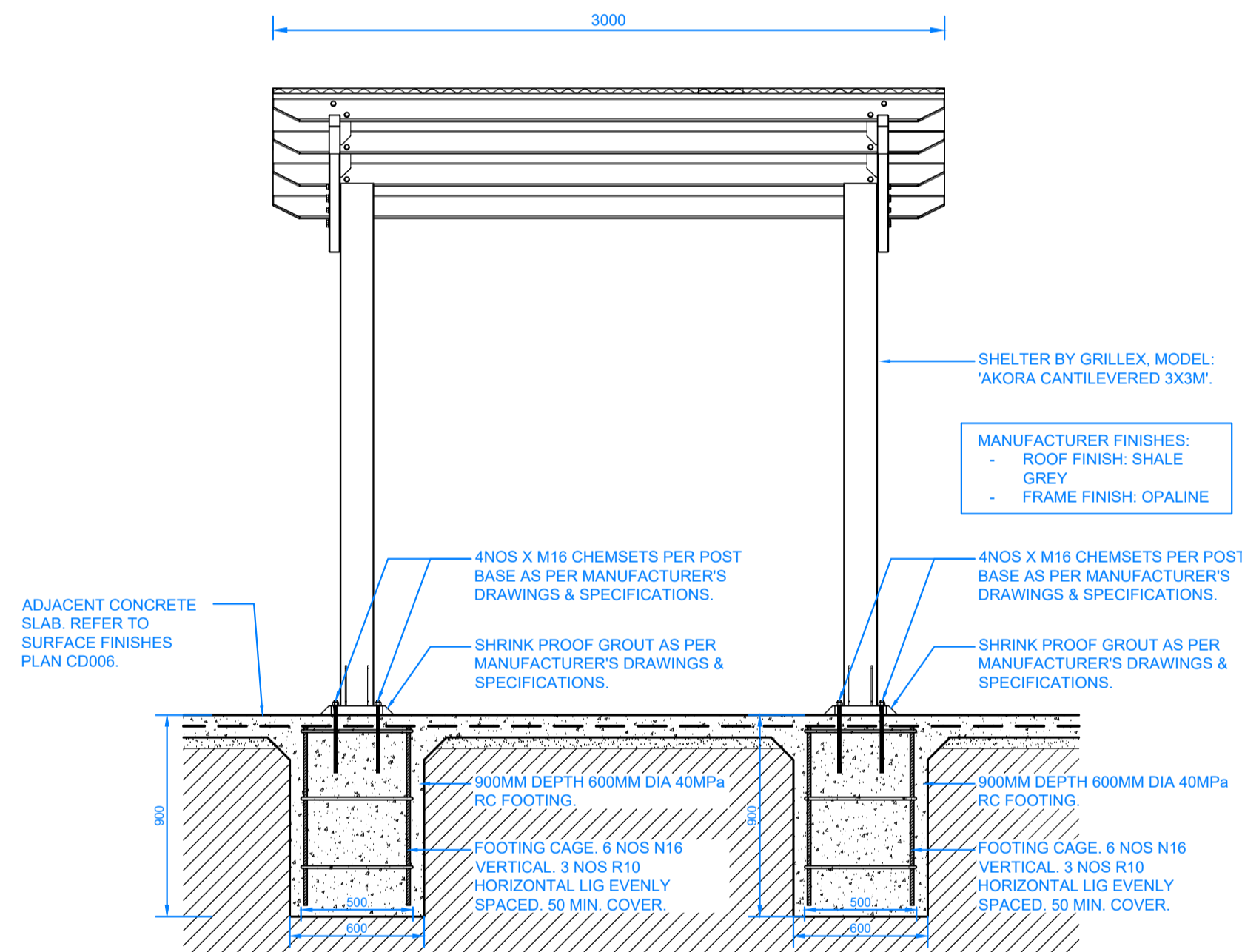
EARTHWORKS:

- 1. STABLE CLEAN FILL COMPACTED TO 98 % (MMD) PLACED AND COMPACTED IN 200MM LAYERS.
- 2. REFER TO SOIL REPORT FOR FURTHER DETAILS.
- 3. ALL SUBGRADE PREPARATION WORKS UNDER ALL CONCRETE PAVEMENTS AREAS AND LOW PROFILES RETAINING WALLS ARE TO BE PROTECTED, ROLLED AND COMPACTED AS PER SOIL REPORTS TO BE EXCAVATED OUT IN THE GEOTECHNICAL REPORT SUPPLIED BY CIVIL TEST REPORT 14/14 DATED JANUARY 2015.
- 4. ALL SOFT SPOTS TO BE EXCAVATED DOWN TO APPROPRIATE DEPTH AND REPLACED WITH COMPACTED FILL TO 98% MMD IN 200MM LAYERS.
- 5. FURTHER GEOTECHNICAL ADVISE MAY BE REQUIRED.

2403 CD210 B



PLAN



ELEVATION

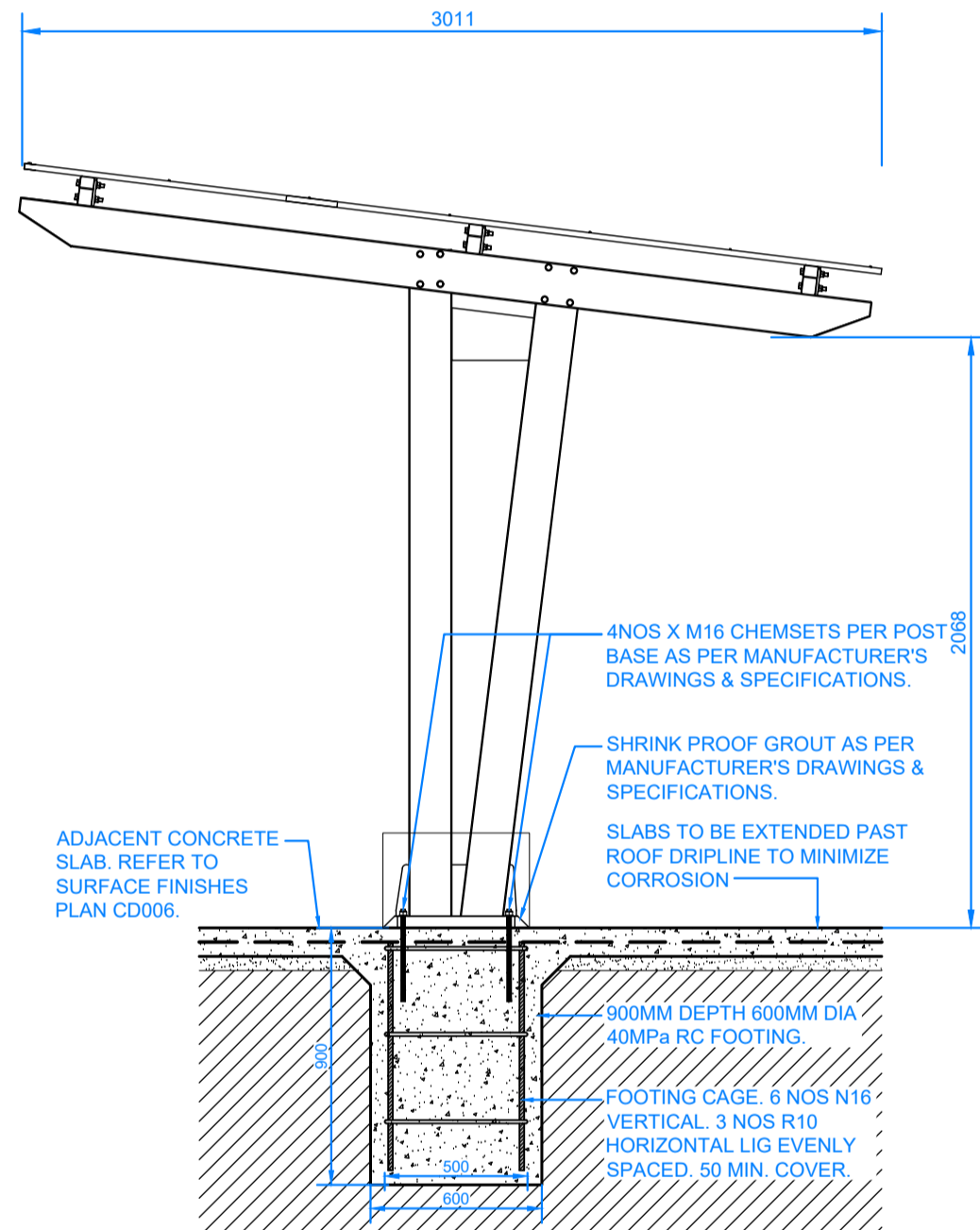
A 300 3X3 GRILLEX/GX PRODUCTS AKORA SHELTER

NOTE:
SHELTER - 'AKORA 3X3 CANTILEVER SHELTER' SUPPLIED BY GRILLEX/GX PRODUCTS (PH:1300460697). FINISHES AS PER BELOW:

- ROOF FINISH: SHALE GREY
- FRAME FINISH: OPALINE



IMAGE FOR ILLUSTRATION ONLY. REFER TO NOTES & SPECIFICATIONS FOR COLOUR & FINISHES



SIDE VIEW

SCALE 1:25

- WARNING -
CONTRACTOR TO VERIFY LOCATION; DEPTH/CLEARANCE AND ALIGNMENT OF OVERHEAD AND UNDERGROUND SERVICES. CONTRACTOR TO ACQUIRE CURRENT AND RELEVANT 'DIAL BEFORE YOU DIG' ONE CALL SERVICES DRAWINGS AND ADHERE TO ALL REQUIREMENTS FOR WORKS NEAR SERVICES INCLUDING CLEARANCES, EASEMENTS AND INFORMING SERVICE AUTHORITIES PRIOR TO COMMENCEMENT OF WORKS. THE LOCATIONS OF UNDERGROUND SERVICES INDICATED IN THIS SET OF DRAWINGS ARE INDICATIVE ONLY. PIT LOCATIONS HAVE BEEN SURVEYED BY A LICENSED SURVEYOR.

- SITE DIMENSIONS -
CONTRACTOR TO SATISFY THEMSELVES OF SITE CONDITIONS, CHANGES IN LEVEL AND DIMENSIONS PRIOR TO FABRICATION OF SITE SPECIFIC ITEMS OR PRIOR TO ORDERING/PURCHASING MATERIALS. WHERE DISCREPANCIES EXIST BETWEEN DRAWINGS AND SITE CONDITIONS CONTRACTOR TO NOTIFY SUPERINTENDENT PRIOR TO COMMENCEMENT OF WORKS.

- COPYRIGHT AND INTELLECTUAL PROPERTY RIGHTS -
ENLOCUS RETAINS THE INTELLECTUAL PROPERTY RIGHT IN RELATION TO THE CONTRACT MATERIAL. THE DESIGN AS REPRESENTED BY THE DRAWING SET AND ALL DETAILS, INGENUITY AND INNOVATION REMAIN THE PROPERTY OF ENLOCUS. REFER TO CONTRACT FOR IRREVOCABLE LICENSE GRANTED TO THE CLIENT AND COPYRIGHT ARRANGEMENT. © ENLOCUS 2022

DRAWING STATUS:

PRE-CONSTRUCTION NOT FOR CONSTRUCTION

REVISION STATUS:

B	100% Issue	24.07.24
A	Pre-Construction Issue For Approval	10.07.24

LANDSCAPE ARCHITECT CONSULTANT:

enlocus

ENLOCUS
Ground Floor,
151 St Georges Rd,
Fitzroy North, Victoria 3066
T : 03 9482 2202
W : www.enlocus.com

CONSULTANTS:

STRUCTURAL ENGINEER

MATRIX ENGINEERING

GROUP P/L

24/37 Kellor Park Drive

Kellor Park, Victoria 3042

Tel : +613 9331 7522

www.matrixgroup.net.au

NOTES / LEGEND:

ENGINEERING NOTES:

CONCRETE:

1. CONCRETE STRENGTH N32 MPA.
2. CONCRETE THICKNESS 150MM SLOPES, 100MM PLATFORMS AND FLAT BOTTOM, UNO.
3. CONSTRUCTION JOINTS SHALL BE AT CONSTRUCTED MAXIMUM 6.0M OR AS PER DETAIL.
4. SAW CUTS TO BE SAWN ON PLANS. SAW CUT DEPTH TO BE 30MM DEEP. CHECK REINFORCEMENT DETAIL CD200_P FOR SAW CUT JOINT DETAILS.
5. FOR CURING, COVER FOR SEVEN DAYS WITH PLASTIC, OR BY LIQUID MEMBRANE, TO THE APPROPRIATE AUSTRALIAN STANDARD. APPLY WITHIN 1 HOUR OF CONCRETE FINISHING.
6. FINISH TO BE CLASS 1 METAL TROWEL TO ALL VERTICAL SURFACES. STEEL TROWEL FINISH TO PLATFORMS, FLAT BANKS, TRANSITIONS, ETC.
7. REFER TO A.S.3600 - CONCRETE STRUCTURES AND A.S.2870-2011 - RESIDENTIAL SLABS AND FOOTINGS.

REINFORCEMENT:

1. AS SHOWN.
 2. TRIMMERS - 2 OF N12@2000 LONG TO ALL INTERNAL CORNERS.
 3. BASE SLAB - SL82 MESH OR N12 @ 250 CRS EW.
 4. VERTICAL WALLS - REFER TO RC WALL - REINFORCEMENT DETAILS ON CD201.
 5. BLOCKS - AS SHOWN.
 6. GRIND RAIL S - SHALL BE 75X75XMM 'DURAGAL' RHS (UNLESS OTHERWISE STATED ON PLANS). ENDS MITRED AND ALL WELDS GRIND SMOOTH AND COLD GALVANISED. ALL COLD GALVANISED AREAS TO HAVE 'GALMET' DURAGAL SILVER PAINT APPLIED. APPLICATION TO BE NEAT AND CONSISTENT.
- EARTHWORKS:
1. STABLE CLEAN FILL COMPACTED TO 98 % (MMD) PLACED AND COMPACTED IN 200MM LAYERS.
 2. REFER TO SOIL REPORT FOR FURTHER DETAILS.
- ALL SUBGROUND PREPARATION WORKS UNDER ALL CONCRETE PAVEMENTS AREAS AND LOW PROFILE RETAINING WALLS ARE TO BE PROTECTED, ROLLED AND COMPACTED AS PER RECOMMENDATIONS SET OUT IN THE GEOTECHNICAL REPORT SUPPLIED BY CIVIL TEST (REPORT NO: 1141196 DATED JANUARY 2015)
3. ALL SOFT SPOTS TO BE EXCAVATED DOWN TO APPROPRIATE DEPTH AND REPLACED WITH COMPACTED FILL TO 98% MMD IN 200MM LAYERS.
 4. FURTHER GEOTECHNICAL ADVICE MAY BE REQUIRED.

CLIENT NAME:

MAROONDAH CITY COUNCIL
179 Maroondah Highway,
Ringwood VIC 3134

PROJECT NAME:

MAROONDAH SKATE PARK
25 Watermoor Ave,
Kilsyth South VIC 3137

DRAWING TITLE:

Shelter Details

SCALE:	N/A	DATE OF ISSUE:	24.07.2024
FORMAT / SIZE:	A1	REFERENCE NO:	2403
DESIGN REVIEW:	ND	APPROVAL:	JM

DRAWING NUMBER:

2403_CD300

REVISION:

B