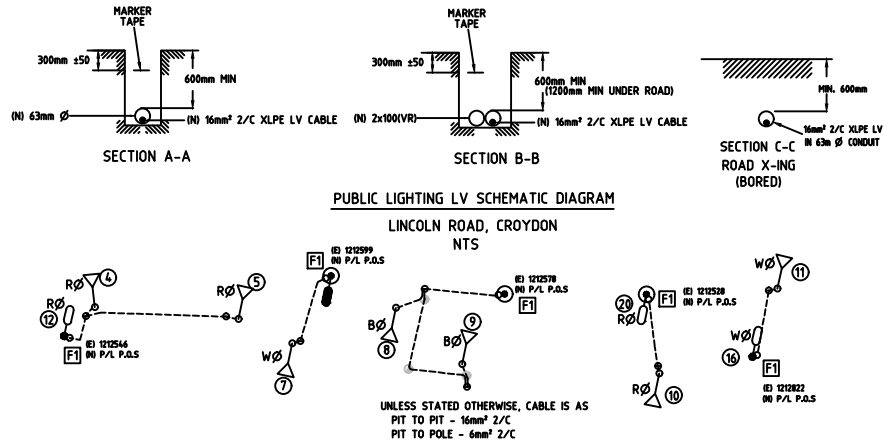


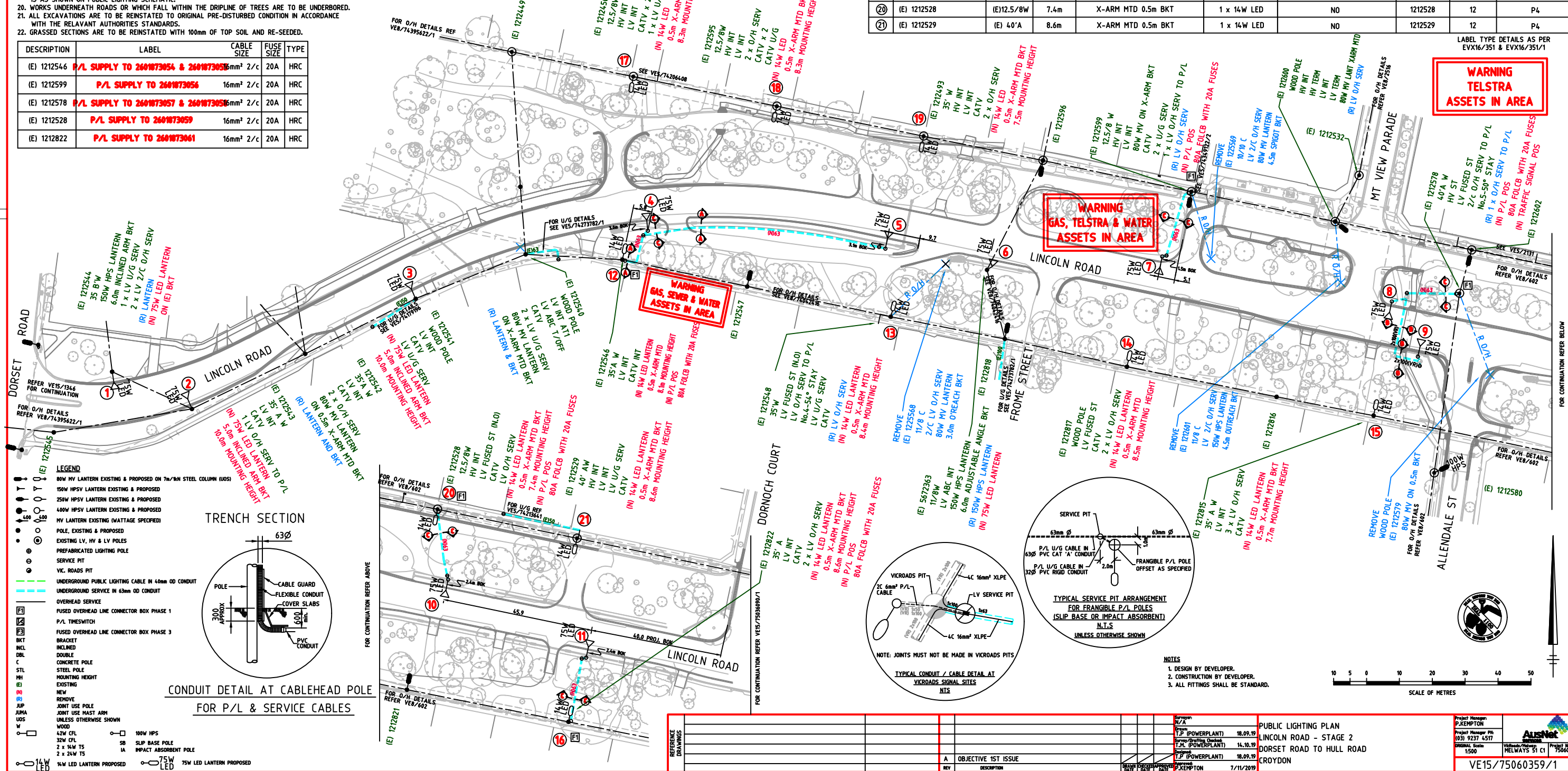
- NOTE:**
1. LIGHTING HAS BEEN DESIGNED BY AN AUSNET SERVICES (ACCREDITED LIGHTING DESIGNER), TO AS/NZS 1158 CATEGORY V FLAG LIGHTING FOR LINCOLN ROAD & P4 FOR SERVICE ROADS AS DESIGNATED BY COUNCIL UNLESS SHOWN OTHERWISE.
 2. BEFORE ANY WORK COMMENCES THE ACCREDITED CONTRACTOR SHALL OBTAIN AN "ACC FORM" FROM AUSNET SERVICES REPRESENTATIVE FOR PERMISSION TO COMMENCE WORKS.
 3. THE ACCREDITED CONTRACTOR SHALL ABIDE BY THIS PLAN AND THE TECHNICAL SPECIFICATION PROVIDED WITH THE AUSNET SERVICES OFFER. NOTIFICATION TO AUSNET SERVICES REPRESENTATIVE SHALL BE GIVEN WHEN WORK IS COMPLETE FOR FINAL INSPECTION TO BE INITIATED. CABLE DETAILS MUST BE OBTAINED USING A VEDM APPROVED CONTRACTOR.
 4. EXISTING LIGHTING SHALL NOT BE RETIRED UNTIL NEW LIGHTING IS INSTALLED AND FULLY OPERATIONAL.
 5. "AS BUILT" DRAWINGS SHALL BE PREPARED BY AN AUSNET SERVICES APPROVED DETAILER/DRAFTSPERSON AND SUBMITTED TO AUSNET SERVICES AT LEAST 7 DAYS PRIOR TO TIE IN FOR FINAL APPROVAL.
 6. THE TIE IN SHALL BE CARRIED OUT BY THE ACCREDITED CONTRACTOR; AFTER A PRE-COMMISSION AUDIT PASS RESULT. FORMAL APPROVAL IS REQUIRED FROM AUSNET SERVICES LOCAL OPERATIONS GROUP TO ENERGISE THE INSTALLATION.
 7. NST TESTING SHALL BE CARRIED OUT ON PUBLIC LIGHTING CIRCUITS PRIOR TO ENERGISATION. (TYPICALLY DP11-02 AND VXS/2036).
 8. THE ACCREDITED CONTRACTOR SHALL INSTALL ALL THE ELECTRICAL PITS, CONDUITS AND CABLES FOR THE PUBLIC LIGHTING INSTALLATION TO THE SATISFACTION OF AUSNET SERVICES REPRESENTATIVE.
 9. LIGHT POLES SHALL BE INSTALLED 1.5m B.O.K. ON SIDE OF ROAD UNLESS OTHERWISE SPECIFIED.
 10. ALL FITTINGS SHALL BE IN ACCORDANCE WITH THE INSTALLATION SCHEDULE.
 11. DUE DILIGENCE CLAUSE: THE ACCREDITED CONTRACTOR IS RESPONSIBLE FOR MAINTAINING STATUTORY CLEARANCES (NO GO ZONES) TO ALL AUTHORITIES' UNDERGROUND AND OVERHEAD ASSETS, AT ALL TIMES. THE CONTRACTOR IS RESPONSIBLE FOR KNOWING THE LOCATION OF ALL ASSETS (DIAL BEFORE YOU DIG) AND MUST ARRANGE ON-SITE INSPECTIONS WITH ALL AUTHORITIES PRIOR TO THE COMMENCEMENT OF WORKS.
 12. ALL LANTERNS (COMPLETE WITH PE CELL), POLES AND PITS SHALL BE AUSNET SERVICES APPROVED AND ARE TO COMPLY WITH VICTORIAN ELECTRICITY SUPPLY INDUSTRY SPECIFICATIONS AND REQUIREMENTS.
 13. ALL BRACKETS SHALL BE CURVED VESI STANDARD POWER AUTHORITY TYPE.
 14. CONDUITS SHALL BE HEAVY DUTY RIGID SOLID PVC TO AS 2053 (TO THE MINIMUM 1984 STANDARDS), COLOURED, ORANGE, SANDWICH, COREFOLO OR CORRUGATED TYPES ARE NOT ACCEPTABLE.
 15. ORANGE MARKER TAPE IN ACCORDANCE WITH AS/NZS 2648.1 SHALL BE INSTALLED TO 300mm BELOW SURFACE LEVEL ±50mm OF ALL NON-BORED CONDUITS.
 16. ALL EQUIPMENT SUPPLIED SHALL BE NEW.
 17. LIGHT POLES SHALL BE INSTALLED WITH A MINIMUM CLEARANCE OF 1.5m FROM DRIVEWAYS, PRAM CROSSINGS AND DRAINAGE PITS.
 18. COUNCIL/VICROADS WILL BE RESPONSIBLE FOR THE PAYMENT OF TARIFFS.
 19. INSTALLATION OF PUBLIC LIGHTING IS AS SHOWN IN THE TABLE AND INSTALLATION OF CABLES IS AS SHOWN ON PUBLIC LIGHTING SCHEMATIC.
 20. WORKS UNDERNEATH ROADS OR WHICH FALL WITHIN THE DRIPLINE OF TREES ARE TO BE UNDERBORED.
 21. ALL EXCAVATIONS ARE TO BE REINSTATED TO ORIGINAL PRE-DISTURBED CONDITION IN ACCORDANCE WITH THE RELEVANT AUTHORITIES STANDARDS.
 22. GRASSED SECTIONS ARE TO BE REINSTATED WITH 100mm OF TOP SOIL AND RE-SEED.



INSTALLATION SCHEDULE

| POLE No. | POLE TYPE | POLE LENGTH (m) | POLE HEIGHT (m) | BRACKET O'REACH (m) | LUMINAIRE | COST SHARED | CAM NUMBERS | LABEL TYPE | LIGHTING CATEGORY |
|----------|---------------------|-----------------|-----------------|---------------------------|-------------|-------------|-------------|------------|-------------------|
| 1 | (E) 1212544 | (E) 35'W | (E) 9.0m | (E) 6.0m INCLINED ARM BKT | 1 x 75W LED | NO | 1212544 | 12 | V FLAG LIGHTING |
| 2 | (E) 1212543 | (E) 35'W | 10.0m | 5.0m INCLINED ARM BKT | 1 x 75W LED | NO | 1212543 | 12 | V FLAG LIGHTING |
| 3 | (E) 1212541 | (E) WOOD | 10.0m | 5.0m INCLINED ARM BKT | 1 x 75W LED | NO | 1212541 | 12 | V FLAG LIGHTING |
| 4 | SLIP BASE | 8.5m | 10.0m | SINGLE 4.5m SPIGOT BKT | 1 x 75W LED | NO | 2601873054 | 12 | V FLAG LIGHTING |
| 5 | FRANGIBLE SLIP BASE | 8.5m | 10.0m | SINGLE 4.5m SPIGOT BKT | 1 x 75W LED | NO | 2601873055 | 12 | V FLAG LIGHTING |
| 6 | (E) 5672363 | (E) 11/8W | (E) 9.1m | (E) 6.0m INCLINED ARM BKT | 1 x 75W LED | NO | 5672363 | 12 | V FLAG LIGHTING |
| 7 | SLIP BASE | 11.0m | 12.5m | SINGLE 4.5m SPIGOT BKT | 1 x 75W LED | NO | 2601873056 | 12 | V FLAG LIGHTING |
| 8 | JOINT USE MAST ARM | 11.0m | 12.5m | SINGLE 4.5m SPIGOT BKT | 1 x 75W LED | NO | 2601873057 | 12 | V FLAG LIGHTING |
| 9 | JOINT USE POLE | 11.0m | 12.5m | SINGLE 4.5m SPIGOT BKT | 1 x 75W LED | NO | 2601873058 | 12 | V FLAG LIGHTING |
| 10 | SLIP BASE | 11.0m | 12.5m | SINGLE 4.5m SPIGOT BKT | 1 x 75W LED | NO | 2601873059 | 12 | V FLAG LIGHTING |
| 11 | SLIP BASE | 8.5m | 10.0m | SINGLE 4.5m SPIGOT BKT | 1 x 75W LED | NO | 2601873061 | 12 | V FLAG LIGHTING |
| 12 | (E) 1212546 | (E) 35'W | 8.1m | X-ARM MTD 0.5m BKT | 1 x 14W LED | NO | 1212546 | 12 | P4 |
| 13 | (E) 1212548 | (E) 35'W | 8.4m | X-ARM MTD 0.5m BKT | 1 x 14W LED | NO | 1212548 | 12 | P4 |
| 14 | (E) 1212817 | (E) WOOD | 8.5m | X-ARM MTD 0.5m BKT | 1 x 14W LED | NO | 1212817 | 12 | P4 |
| 15 | (E) 1212815 | (E) 35'W | 7.7m | X-ARM MTD 0.5m BKT | 1 x 14W LED | NO | 1212815 | 12 | P4 |
| 16 | (E) 1212822 | (E) 35'A | 8.6m | X-ARM MTD 0.5m BKT | 1 x 14W LED | NO | 1212822 | 12 | P4 |
| 17 | (E) 1212450 | (E) 12.5/8W | 8.3m | X-ARM MTD 0.5m BKT | 1 x 14W LED | NO | 1212450 | 12 | P4 |
| 18 | (E) 1212595 | (E) 12.5/8W | 8.3m | X-ARM MTD 0.5m BKT | 1 x 14W LED | NO | 1212595 | 12 | P4 |
| 19 | (E) 1212493 | (E) 35'W | 7.5m | X-ARM MTD 0.5m BKT | 1 x 14W LED | NO | 1212493 | 12 | P4 |
| 20 | (E) 1212528 | (E) 12.5/8W | 7.4m | X-ARM MTD 0.5m BKT | 1 x 14W LED | NO | 1212528 | 12 | P4 |
| 21 | (E) 1212529 | (E) 40'A | 8.6m | X-ARM MTD 0.5m BKT | 1 x 14W LED | NO | 1212529 | 12 | P4 |

| DESCRIPTION | LABEL | CABLE SIZE | FUSE SIZE | TYPE |
|-------------|---------------------------------------|-----------------------|-----------|------|
| (E) 1212546 | P/L SUPPLY TO 2601873054 & 2601873055 | 6mm ² 2/C | 20A | HRC |
| (E) 1212599 | P/L SUPPLY TO 2601873056 | 16mm ² 2/C | 20A | HRC |
| (E) 1212578 | P/L SUPPLY TO 2601873057 & 2601873058 | 6mm ² 2/C | 20A | HRC |
| (E) 1212528 | P/L SUPPLY TO 2601873059 | 16mm ² 2/C | 20A | HRC |
| (E) 1212822 | P/L SUPPLY TO 2601873061 | 16mm ² 2/C | 20A | HRC |



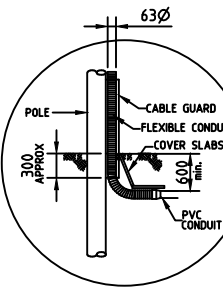
LABEL TYPE DETAILS AS PER EVX16/351 & EVX16/351/1

WARNING TELSTRA ASSETS IN AREA

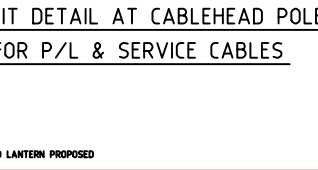
WARNING GAS, TELSTRA & WATER ASSETS IN AREA

WARNING GAS, SEWER & WATER ASSETS IN AREA

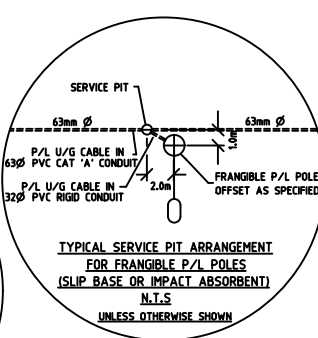
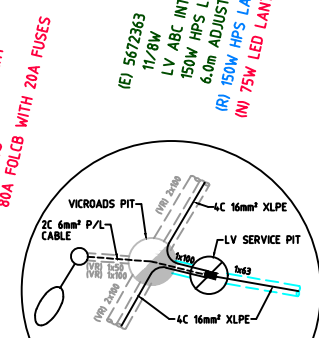
TRENCH SECTION



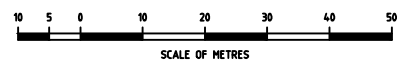
CONDUIT DETAIL AT CABLEHEAD POLE FOR P/L & SERVICE CABLES



- LEGEND**
- 80W HV LANTERN EXISTING & PROPOSED ON 7m/8m STEEL COLUMN (UOS)
 - 150W HPS LANTERN EXISTING & PROPOSED
 - 25W HPS LANTERN EXISTING & PROPOSED
 - 400W HPS LANTERN EXISTING & PROPOSED
 - HV LANTERN EXISTING (WATTAGE SPECIFIED)
 - POLE, EXISTING & PROPOSED
 - EXISTING LV, HV & LV POLES
 - PREFABRICATED LIGHTING POLE
 - SERVICE PIT
 - VK. ROADS PIT
 - UNDERGROUND PUBLIC LIGHTING CABLE IN 40mm OD CONDUIT
 - UNDERGROUND SERVICE IN 63mm OD CONDUIT
 - OVERHEAD SERVICE
 - FUSED OVERHEAD LINE CONNECTOR BOX PHASE 1
 - P/L TIMESWITCH
 - FUSED OVERHEAD LINE CONNECTOR BOX PHASE 3
 - BRACKET
 - INCLINED
 - DOUBLE
 - CONCRETE POLE
 - STEEL POLE
 - MOUNTING HEIGHT
 - EXISTING
 - NEW
 - REMOVE
 - JOINT USE POLE
 - JOINT USE MAST ARM
 - UNLESS OTHERWISE SHOWN
 - WOOD
 - 14W CFL
 - 32W CFL
 - 2 x 14W TS
 - 2 x 24W TS
 - 190W HPS
 - SLIP BASE POLE
 - IMPACT ABSORBENT POLE
 - 14W LED LANTERN PROPOSED
 - 75W LED LANTERN PROPOSED



- NOTES**
1. DESIGN BY DEVELOPER.
 2. CONSTRUCTION BY DEVELOPER.
 3. ALL FITTINGS SHALL BE STANDARD.



| NO. | DESCRIPTION | DATE | BY | CHECKED |
|-----|---------------------|------------|------------|------------|
| 1 | OBJECTIVE 1ST ISSUE | 18.09.19 | P. KEMPTON | P. KEMPTON |
| 2 | | 14.10.19 | P. KEMPTON | P. KEMPTON |
| 3 | | 18.09.19 | P. KEMPTON | P. KEMPTON |
| 4 | | 17/11/2019 | P. KEMPTON | P. KEMPTON |

PUBLIC LIGHTING PLAN
LINCOLN ROAD - STAGE 2
DORSET ROAD TO HULL ROAD
CROYDON

Project Manager: P. KEMPTON
Project Manager Pk: (03) 9237 4517
Drawing No: VE15/75060359
Scale: 1:500
Date: 17/11/2019