

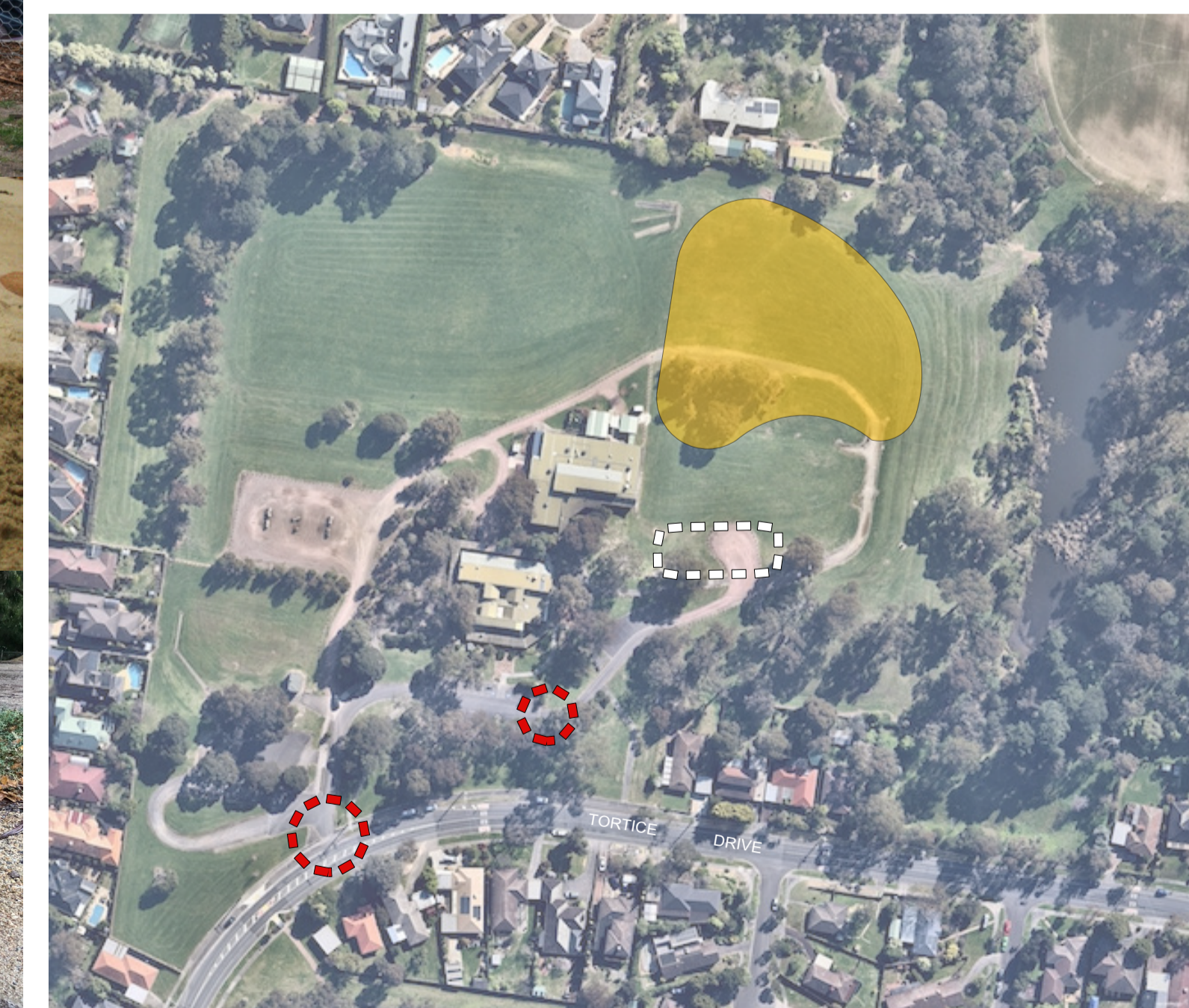


DOG PARK CONCEPT ITEMS

- STAGE 1:**
- ① DOUBLE GATED ENTRY ON CONCRETE PAD
 - ② MAINTENANCE VEHICLE ENTRY GATE
 - ③ 2 x BOWL DRINKER WITH TAP ON CONCRETE PAD WITH DEPRESSION FOR WATER TO POOL FOR SHORT PERIODS
 - ④ GRAVEL SURFACE TO HIGH TRAFFIC AREAS
 - ⑤ DIGGING PIT - MIN 400mm DEPTH, ROCK EDGE AS INFORMAL SEATING (SENSORY)
 - ⑥ ROCK CLAMBER MOUND (SENSORY)
 - ⑦ QUIET DOG AREA
 - ⑧ PERIMETER WALKING / JOGGING TRACK @ 1.5m WIDE
 - ⑨ 1.2m HIGH DOG PROOF FENCING. 90 DEGREE CORNERS AVOIDED
 - ⑩ VEGETATION TO ENHANCE THE ENTRANCE / EXITS AND TO SCREEN ARRIVING DOGS FROM OFF LEASH DOGS
 - ⑪ PLANTINGS UP TO 1.2m HIGH ALONG EDGE OF ENCLOSURE TO DETER DOGS FROM RUNNING THE FENCELINE
 - ⑫ TREE GROVES (SENSORY)
 - ⑬ SPACE BREAKERS CONSISTING OF ROCKS AND TREE IN THE CENTRE (SENSORY)
- STAGE 2:**
- ⑭ 4 x 4m SHELTER ON CONCRETE PAD WITH SEATING (FUTURE STAGE PENDING FUNDING)
 - ⑮ DOG EDUCATION / TRAINING ITEMS
 - ⑯ DRY CREEK BED (SENSORY)

LEGEND

- GRAVEL SURFACE
- CONCRETE SURFACE
- DRY CREEK BED
- SHELTER WITH SEATING
- NEW TREES
- LOW PLANTINGS TO 1.2m
- ROCK SCRAMBLE MOUND
- SAND DIGGING PIT
- LANDSCAPE MULCH
- 1.2M HIGH FENCING
- LANDSCAPING ROCKS
- BENCH SEAT WITH BACK & ARM RESTS
- DRINKER (2 No)
- BIN AND LITTER BAG DISPENSER (3 No)
- SIGNAGE
- RECLAIMED LOG
- SPACE BREAKERS - REFER ITEM 14
- DOUBLE GATED ENTRY
- MAINTENANCE ACCESS GATE
- FUTURE ROADWAY IMPROVEMENTS
- FUTURE CARPARK



DRAWN BY:	KG	AMENDMENTS:
CHECKED BY:		

krisgalea@bigpond.com
 Kristine Galea
 Mob: 0422 484 544

recreation | open space
 community planning

 planning for people and dogs

PROJECT:
PARKWOOD OFF-LEASH DOG PARK
 35-37 TORTICE DRIVE,
 RINGWOOD NORTH VIC

DATE:	07.02.2022
SCALE:	1:500 @ A1
DRAWING:	DOG PARK CONCEPT PLAN

CLIENT:	MAROONDAH CITY COUNCIL
LOT & PLAN NUMBER:	2130/PP3753
COUNCIL PROPERTY NUMBER:	235413
MELWAYS REF:	36 A12
ISSUE:	DRAFT (E)
SHEET:	1 of 1
PLOT DATE:	07.02.2022